



4100 East Gardenia Avenue
Weston, FL 33332
COMMUNITY: Isles At Weston

MLS # F10516418



Single Family



3378 SQFT



5 Beds



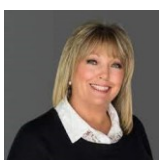
3/1 Baths



3 Car



0.17 Acre



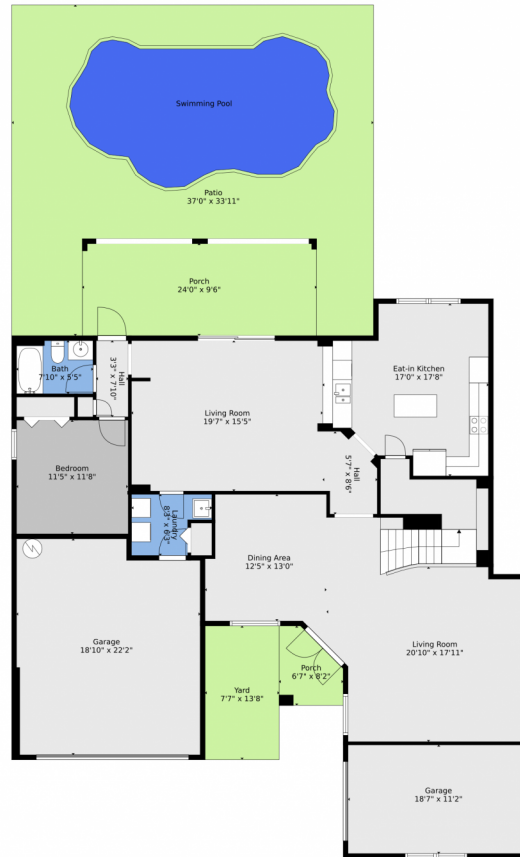
Eileen Mulkey
954-709-8571
eileen@eileenmulkey.com



Scan code
for more
property
details



4100 East Gardenia Avenue, Weston, FL 33332 – Main Level



TOTAL: 2844 sq. ft
FLOOR 1: 1537 sq. ft, FLOOR 2: 1307 sq. ft
EXCLUDED AREAS: PORCH: 283 sq. ft, PATIO: 701 sq. ft, GARAGE: 604 sq. ft,
OPEN TO BELOW: 403 sq. ft
WALLS: 244 sq. ft

Floor Plan Created By V1photos.com, Measurements Deamed Highly Reliable But Not Guaranteed.

Disclaimer: Sizes and Dimensions are Approximate, Actual May Vary.

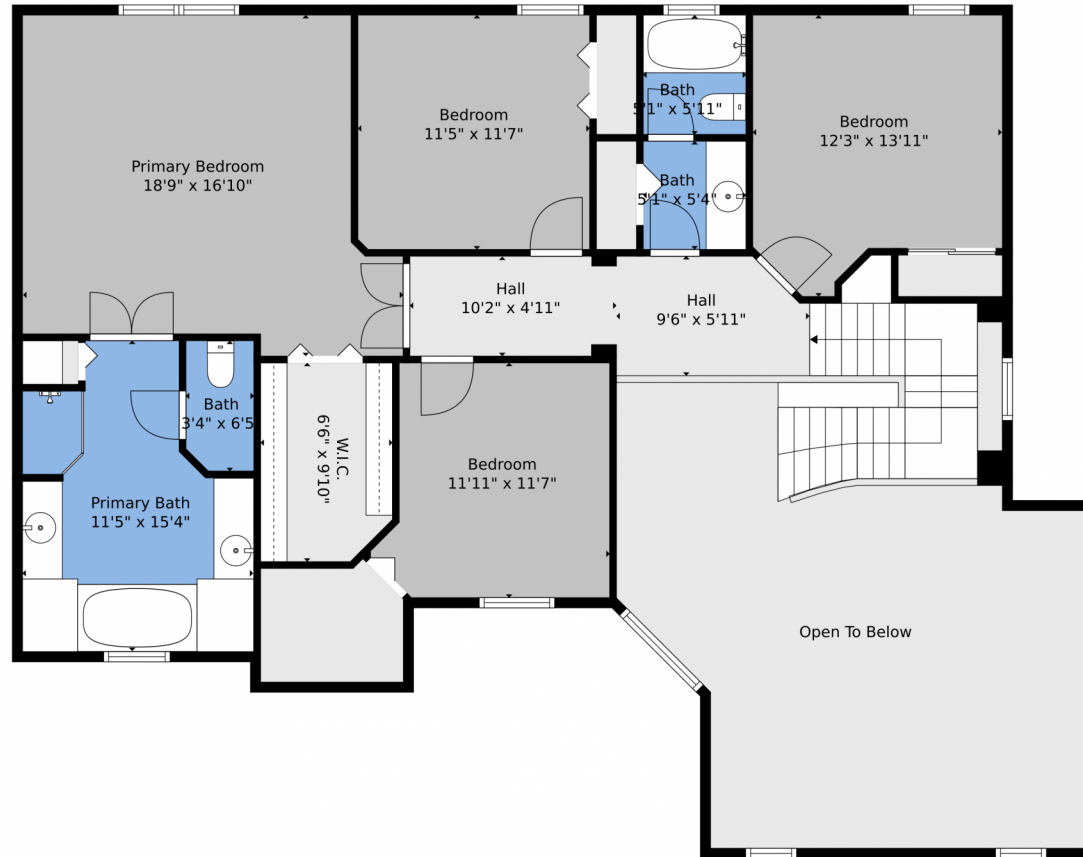


Eileen Mulkey
954-709-8571
eileen@eileenmulkey.com



Scan code
for more
property
details

4100 East Gardenia Avenue, Weston, FL 33332 – 2nd Level



TOTAL: 2844 sq. ft
FLOOR 1: 1537 sq. ft, FLOOR 2: 1307 sq. ft
EXCLUDED AREAS: PORCH: 283 sq. ft, PATIO: 701 sq. ft, GARAGE: 604 sq. ft,
OPEN TO BELOW: 403 sq. ft
WALLS: 244 sq. ft

Floor Plan Created By V1photos.com, Measurements Deamed Highly Reliable But Not Guaranteed.



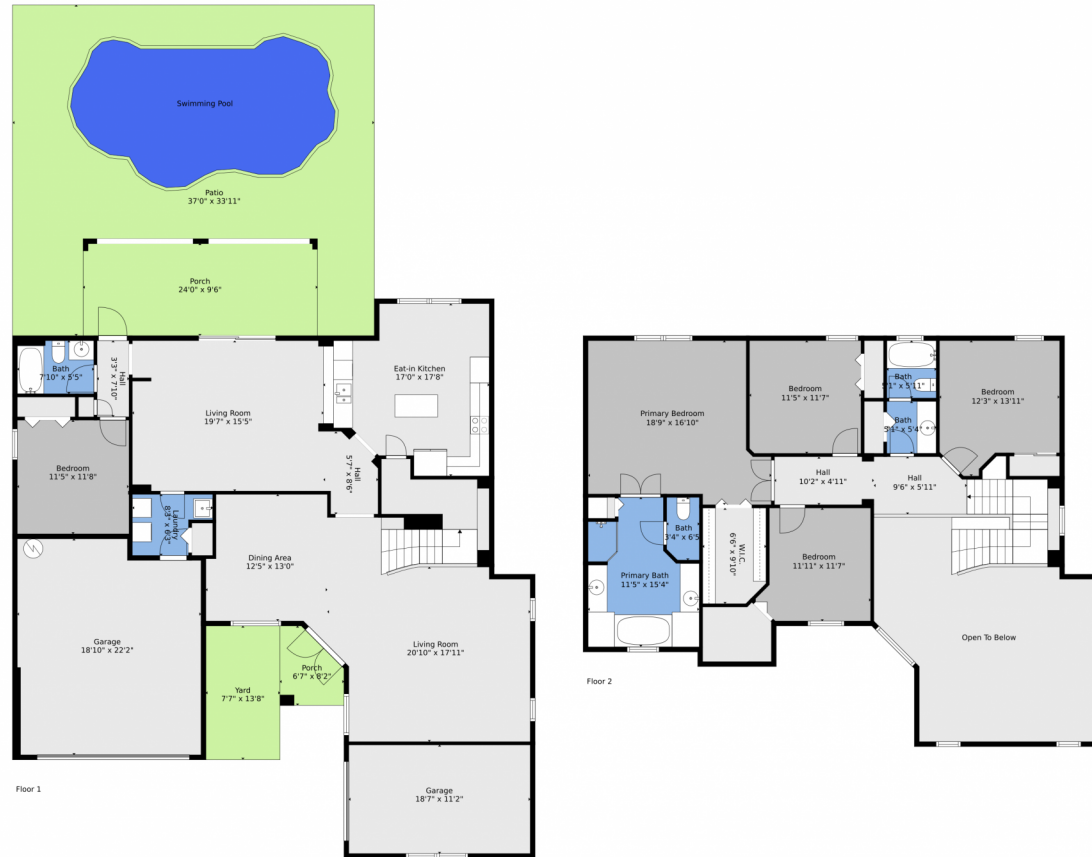
Disclaimer: Sizes and Dimensions are Approximate, Actual May Vary.



Eileen Mulkey
954-709-8571
eileen@eileenmulkey.com



4100 East Gardenia Avenue, Weston, FL 33332 – All Levels



TOTAL: 2844 sq. ft
 FLOOR 1: 1537 sq. ft, FLOOR 2: 1307 sq. ft
 EXCLUDED AREAS: PORCH: 283 sq. ft, PATIO: 701 sq. ft, GARAGE: 604 sq. ft,
 OPEN TO BELOW: 403 sq. ft
 WALLS: 244 sq. ft

Floor Plan Created By V1photos.com, Measurements Deamed Highly Reliable But Not Guaranteed.



Disclaimer: Sizes and Dimensions are Approximate, Actual May Vary.



Eileen Mulkey
 954-709-8571
 eileen@eileenmulkey.com

