



2800 Kalmia Ave #C-103
Boulder, CO 80301
COMMUNITY: Aspen Grove

PRICE \$369,900



Condominium



880 SQFT



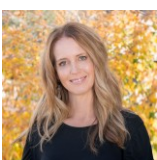
2 Beds



2 Baths

PROPERTY DETAILS

Charming garden-level condo in Aspen Grove Condos, recently renovated with modern touches. This move-in-ready unit features 2 bedrooms and 2 baths. Enjoy low-maintenance laminate wood flooring throughout the main level. The spacious family room includes built-in cabinets and a tiled wood-burning fireplace, ideal for winter. The kitchen boasts updated white cabinets, quartz counters, and stainless steel appliances, creating a perfect entertaining space. The primary suite offers an attached bath and walk-in closet, while the second bedroom has ample closet space. The full bath features radiant heat flooring. The complex includes a pool, hot tub, and reserved parking, all part of a reasonable HOA. Conveniently located near shopping, dining, parks, and Highway 36. Don't miss this opportunity!



Terri Ellerington

303-929-8116

terri@elevated-team.com

<https://www.remax.com/real-estate-agents/terri-ellerington-louisville-co/10205130>

Scan code
for more
property
details

