

54 Spruce Court
Evergreen, CO 80439
COMMUNITY: Evergreen West

MLS # 5194907

Mountain Transformation's Event Venue | Curated experiences at 8,400 feet



Single Family



3000 SQFT



3 Beds



2/1 Baths



1.69 Acre

PROPERTY DETAILS

Perched at 8,500 feet on nearly two private acres, Mountain Transformation offers panoramic views, serene forest surroundings, and a space designed for connection and renewal.

The open-concept layout features a chef's kitchen with Thermador appliances for culinary demonstrations, a wraparound deck ideal for yoga or sunset dining, and inviting living spaces for group sessions or relaxation. Three bedrooms convert easily to treatment or wellness rooms, and the primary suite with a garden tub adds a spa-like experience.

Just minutes from Evergreen's shops, trails, and Red Rocks, this retreat is perfect for small-group intensives, wellness events, milestone celebrations, and corporate offsites.

Somer Walker

512-585-4713

info@mountaintransformation.com

<http://www.mountaintransformation.com>

Scan code
for more
property
details



54 Spruce Court, Evergreen, CO 80439 — Main



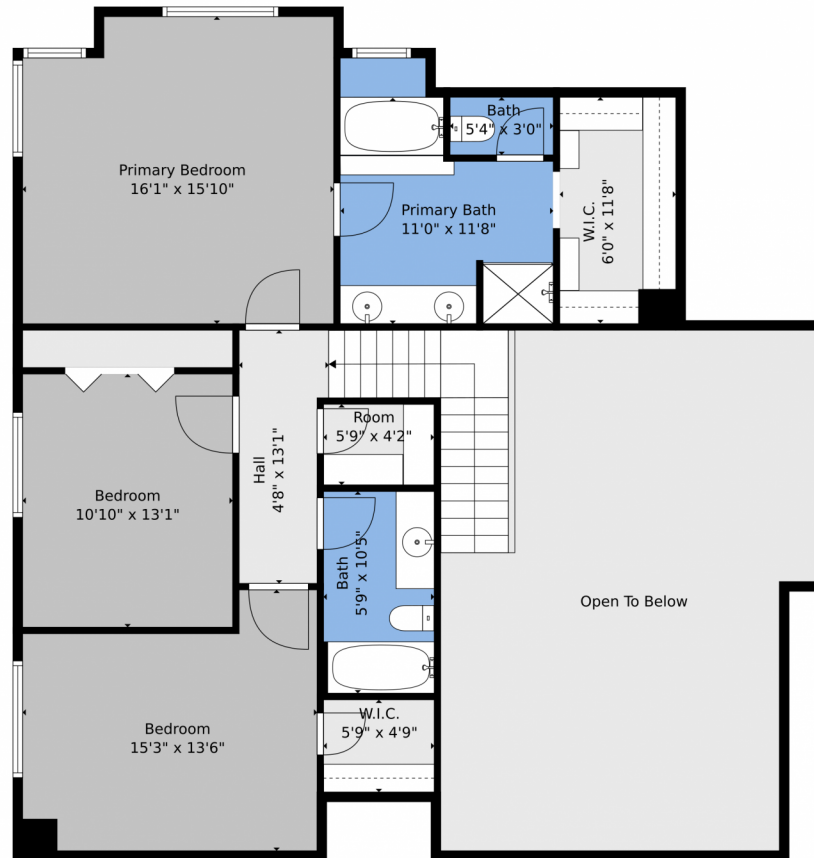
TOTAL: 2312 sq. ft
FLOOR 1: 1232 sq. ft, FLOOR 2: 1080 sq. ft
EXCLUDED AREAS: PATIO: 362 sq. ft, DECK: 550 sq. ft, GARAGE: 581 sq. ft,
FIREPLACE: 12 sq. ft, OPEN TO BELOW: 454 sq. ft
WALLS: 201 sq. ft

Floor Plan Created By V1photos.com, Measurements Deamed Highly Reliable But Not Guaranteed.



Disclaimer: Sizes and Dimensions are Approximate, Actual May Vary.

54 Spruce Court, Evergreen, CO 80439 — 2nd Level



TOTAL: 2312 sq. ft
FLOOR 1: 1232 sq. ft, FLOOR 2: 1080 sq. ft
EXCLUDED AREAS: PATIO: 362 sq. ft, DECK: 550 sq. ft, GARAGE: 581 sq. ft,
FIREPLACE: 12 sq. ft, OPEN TO BELOW: 454 sq. ft
WALLS: 201 sq. ft

Floor Plan Created By V1photos.com, Measurements Deamed Highly Reliable But Not Guaranteed.



Disclaimer: Sizes and Dimensions are Approximate, Actual May Vary.