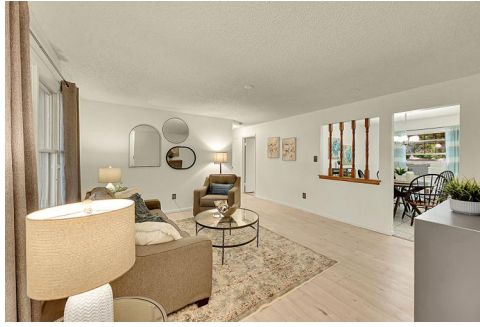




14231 East Wyoming Place  
Aurora, CO 80012  
COMMUNITY: Sableridge

MLS # 6795810



Single Family



2508 SQFT



3 Beds



2 Baths



2 Car



0.21 Acre

## PROPERTY DETAILS

Welcome to 14231 E. Wyoming Place, a charming ranch home with ample outdoor entertaining space! This 3-bed, 2-bath residence sits on a .2-acre corner lot in a quiet cul-de-sac. The front features a brick exterior, mature landscaping, and a covered porch. Inside, the bright living room flows into the dining area, while the kitchen overlooks the lush backyard. The cozy family room boasts a wood-burning fireplace and built-in bookcases, with sliding doors leading to a spacious backyard perfect for indoor-outdoor living. The primary suite includes a walk-in closet and en suite bath, plus two additional bedrooms share a full bath. A finished basement offers flexibility for an office or gym. The backyard features a covered patio and deck. Enjoy nearby tennis courts, parks, and quick access to shopping, dining, and Cherry Creek State Park!



**Bill Dehmlow |**  
**Designated Broker**  
303-434-1019  
Bill@StellerRealEstate.com  
<https://www.StellerRealEstate.com>



**Kory Bryant | Broker**  
**Associate**  
520-861-5165  
Kory@StellerRealEstate.com  
<https://www.StellerRealEstate.com>



Scan code  
for more  
property  
details

