




 Single Family

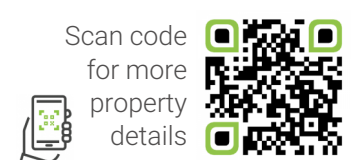
 3159 SQFT

 5 Beds

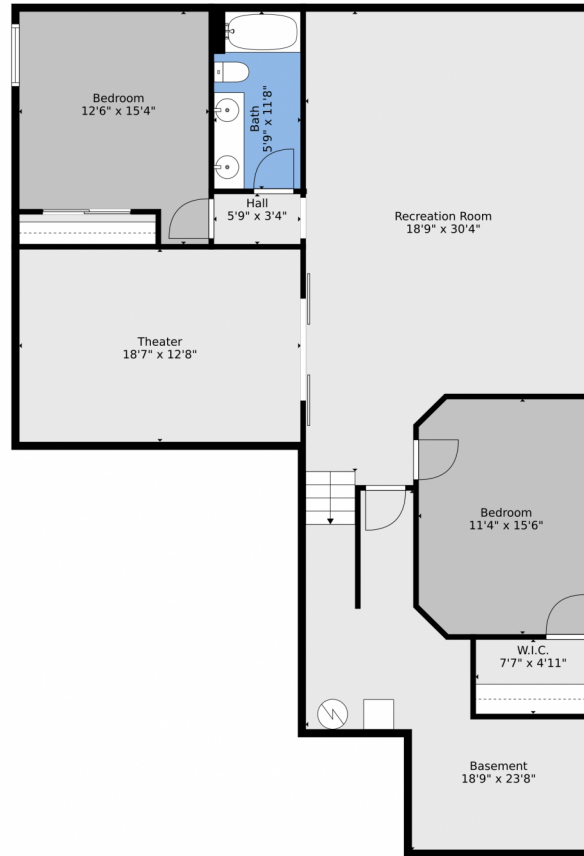
 3 Baths



**Taylor Haas**  
303-665-7368  
taylorh@coloradorpm.com  
<https://www.coloradorpm.com/available-rental-properties-denver>



6332 Tramore Way, Colorado Springs, CO 80923 — Basement



**TOTAL: 2989 sq. ft**  
BELOW GROUND: 1291 sq. ft, FLOOR 2: 1698 sq. ft  
EXCLUDED AREAS: BASEMENT: 228 sq. ft, GARAGE: 390 sq. ft, PORCH: 62 sq. ft  
PATIO: 113 sq. ft  
WALLS: 214 sq. ft

Floor Plan Created By V1photos.com, Measurements Deamed Highly Reliable But Not Guaranteed.



Disclaimer: Sizes and Dimensions are Approximate, Actual May Vary.



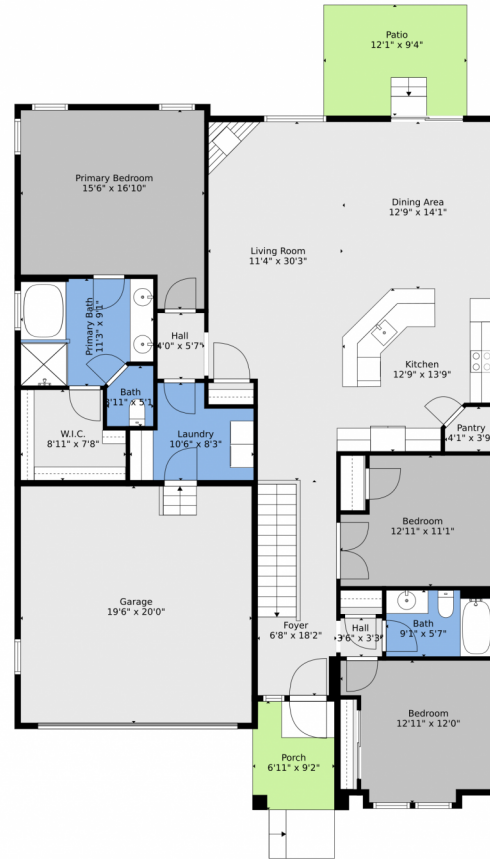
**Taylor Haas**  
303-665-7368  
taylorh@coloradorpm.com  
<https://www.coloradorpm.com/available-rental-properties-denver>



Scan code  
for more  
property  
details



# 6332 Tramore Way, Colorado Springs, CO 80923 – Main



**TOTAL: 2989 sq. ft**  
BELOW GROUND: 1291 sq. ft, FLOOR 2: 1698 sq. ft  
EXCLUDED AREAS: BASEMENT: 228 sq. ft, GARAGE: 390 sq. ft, PORCH: 62 sq. ft.  
PATIO: 113 sq. ft  
WALLS: 214 sq. ft

Floor Plan Created By V1photos.com, Measurements Deamed Highly Reliable But Not Guaranteed.

Disclaimer: Sizes and Dimensions are Approximate, Actual May Vary.



**Taylor Haas**  
303-665-7368  
taylorh@coloradorpm.com  
<https://www.coloradorpm.com/available-rental-properties-denver>



Scan code  
for more  
property  
details



# 6332 Tramore Way, Colorado Springs, CO 80923 – All Levels



**TOTAL: 2989 sq. ft**  
BELOW GROUND: 1291 sq. ft, FLOOR 2: 1698 sq. ft  
EXCLUDED AREAS: BASEMENT: 228 sq. ft, GARAGE: 390 sq. ft, PORCH: 62 sq. ft,  
PATIO: 113 sq. ft  
WALLS: 214 sq. ft

Floor Plan Created By V1photos.com, Measurements Deamed Highly Reliable But Not Guaranteed.



Disclaimer: Sizes and Dimensions are Approximate, Actual May Vary.



**Taylor Haas**

303-665-7368

taylorh@coloradorpm.com

<https://www.coloradorpm.com/available-rental-properties-denver>



Scan code  
for more  
property  
details

