



Single Family



2674 SQFT



4 Beds



3/1 Baths



Taylor Haas

303-665-7368

taylorh@coloradorpm.com

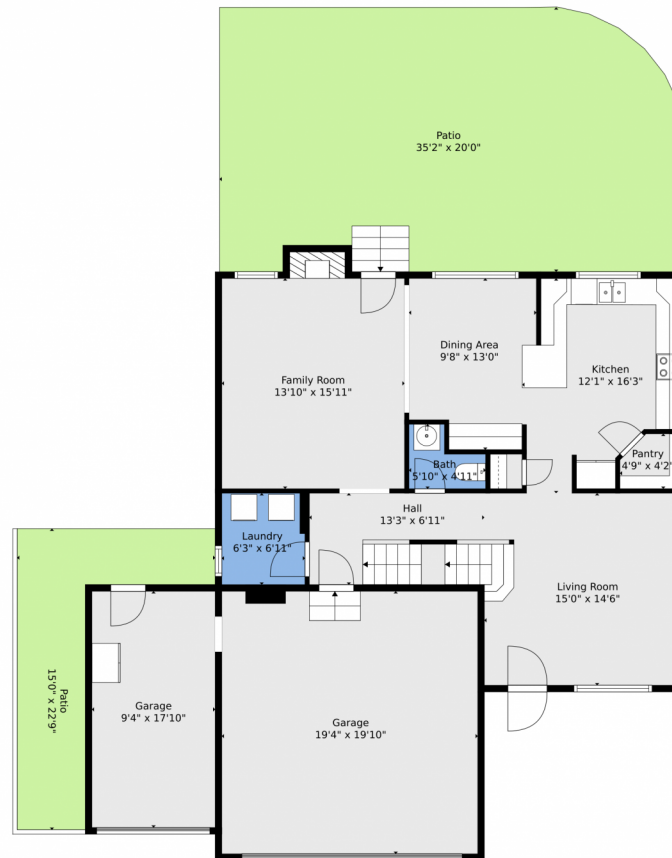
<https://www.coloradorpm.com/available-rental-properties-denver>



Scan code
for more
property
details



111 Misty Creek Drive, Monument, CO 80132 — Main



TOTAL: 2695 sq. ft
BELOW GROUND: 743 sq. ft, FLOOR 2: 924 sq. ft, FLOOR 3: 1028 sq. ft
EXCLUDED AREAS: UTILITY: 89 sq. ft, GARAGE: 551 sq. ft, PATIO: 828 sq. ft,
FIREPLACE: 10 sq. ft, OPEN TO BELOW: 212 sq. ft
WALLS: 249 sq. ft

Floor Plan Created By V1photos.com, Measurements Deamed Highly Reliable But Not Guaranteed.



Disclaimer: Sizes and Dimensions are Approximate, Actual May Vary.



Taylor Haas

303-665-7368

taylorh@coloradorm.com

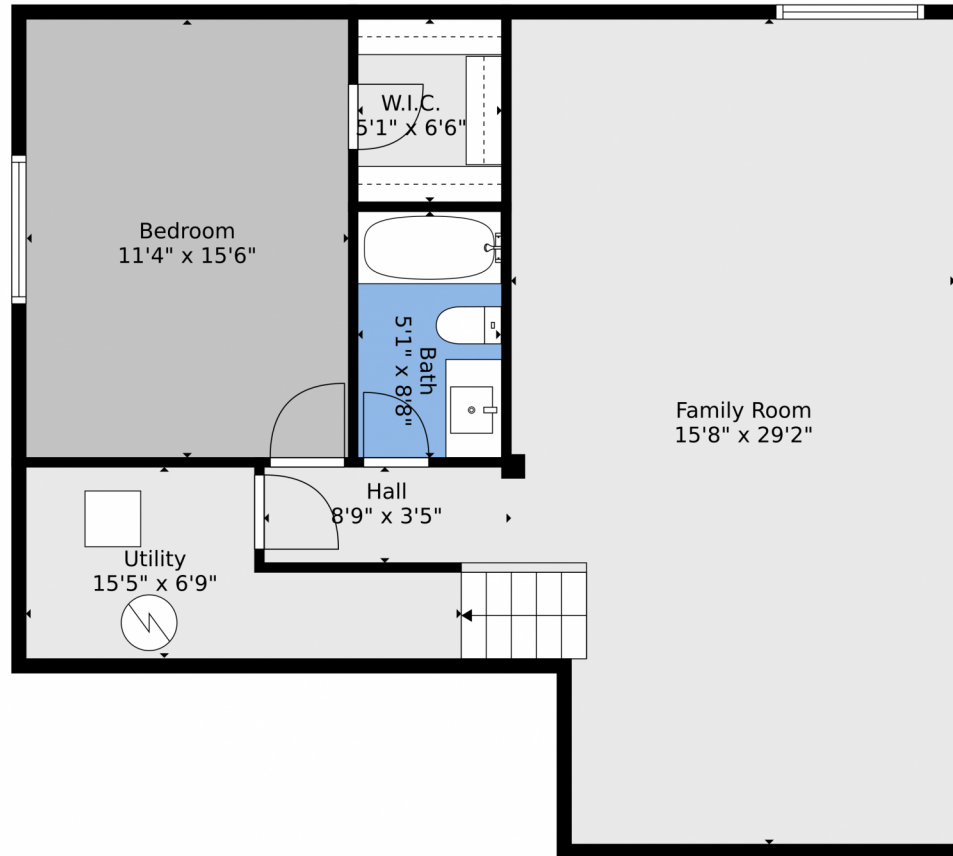
<https://www.coloradorm.com/available-rental-properties-denver>



Scan code
for more
property
details



111 Misty Creek Drive, Monument, CO 80132 — Basement



TOTAL: 2695 sq. ft
BELOW GROUND: 743 sq. ft, FLOOR 2: 924 sq. ft, FLOOR 3: 1028 sq. ft
EXCLUDED AREAS: UTILITY: 89 sq. ft, GARAGE: 551 sq. ft, PATIO: 828 sq. ft,
FIREPLACE: 10 sq. ft, OPEN TO BELOW: 212 sq. ft
WALLS: 249 sq. ft

Floor Plan Created By V1photos.com, Measurements Deamed Highly Reliable But Not Guaranteed.



Disclaimer: Sizes and Dimensions are Approximate, Actual May Vary.



Taylor Haas
303-665-7368
taylorh@coloradorm.com
<https://www.coloradorm.com/available-rental-properties-denver>



111 Misty Creek Drive, Monument, CO 80132 — 2nd Level



TOTAL: 2695 sq. ft
BELOW GROUND: 743 sq. ft, FLOOR 2: 924 sq. ft, FLOOR 3: 1028 sq. ft
EXCLUDED AREAS: UTILITY: 89 sq. ft, GARAGE: 551 sq. ft, PATIO: 828 sq. ft,
FIREPLACE: 10 sq. ft, OPEN TO BELOW: 212 sq. ft
WALLS: 249 sq. ft

Floor Plan Created By V1photos.com, Measurements Deamed Highly Reliable But Not Guaranteed.



Disclaimer: Sizes and Dimensions are Approximate, Actual May Vary.



Taylor Haas

303-665-7368

taylorh@coloradorpm.com

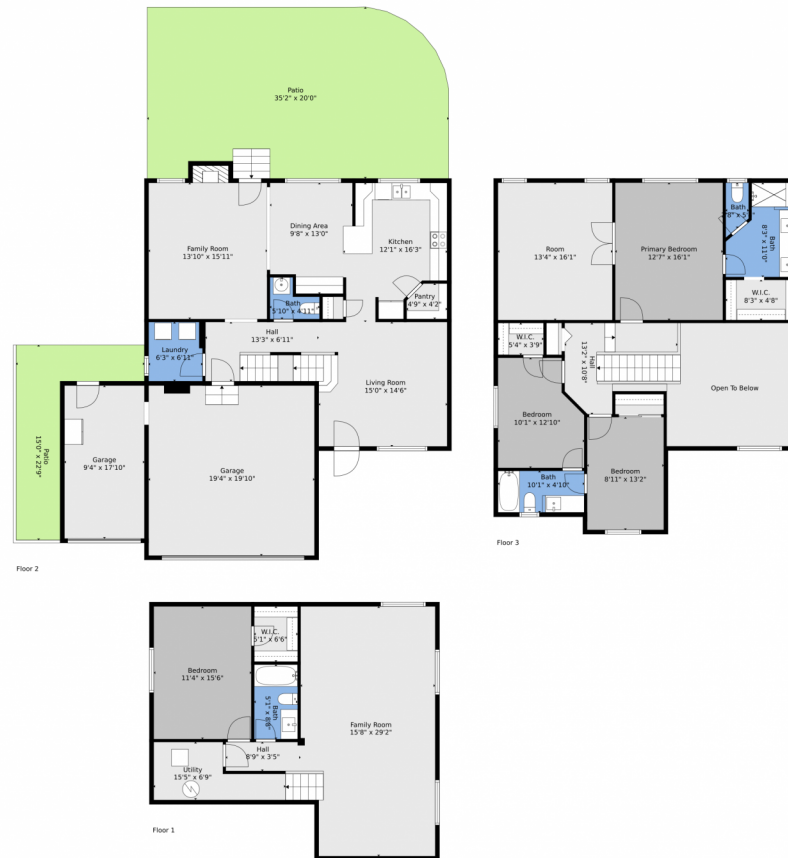
<https://www.coloradorpm.com/available-rental-properties-denver>



Scan code
for more
property
details



111 Misty Creek Drive, Monument, CO 80132 — All Levels



TOTAL: 2695 sq. ft
 BELOW GROUND: 743 sq. ft, FLOOR 2: 924 sq. ft, FLOOR 3: 1028 sq. ft
 EXCLUDED AREAS: UTILITY: 89 sq. ft, GARAGE: 551 sq. ft, PATIO: 828 sq. ft,
 FIREPLACE: 10 sq. ft, OPEN TO BELOW: 212 sq. ft
 WALLS: 249 sq. ft

Floor Plan Created By V1photos.com, Measurements Deamed Highly Reliable But Not Guaranteed.



Disclaimer: Sizes and Dimensions are Approximate, Actual May Vary.



Taylor Haas

303-665-7368

taylorh@coloradorm.com

<https://www.coloradorm.com/available-rental-properties-denver>



Scan code
for more
property
details

