


13027 Sunrise Ridge Drive Peyton, CO 80831



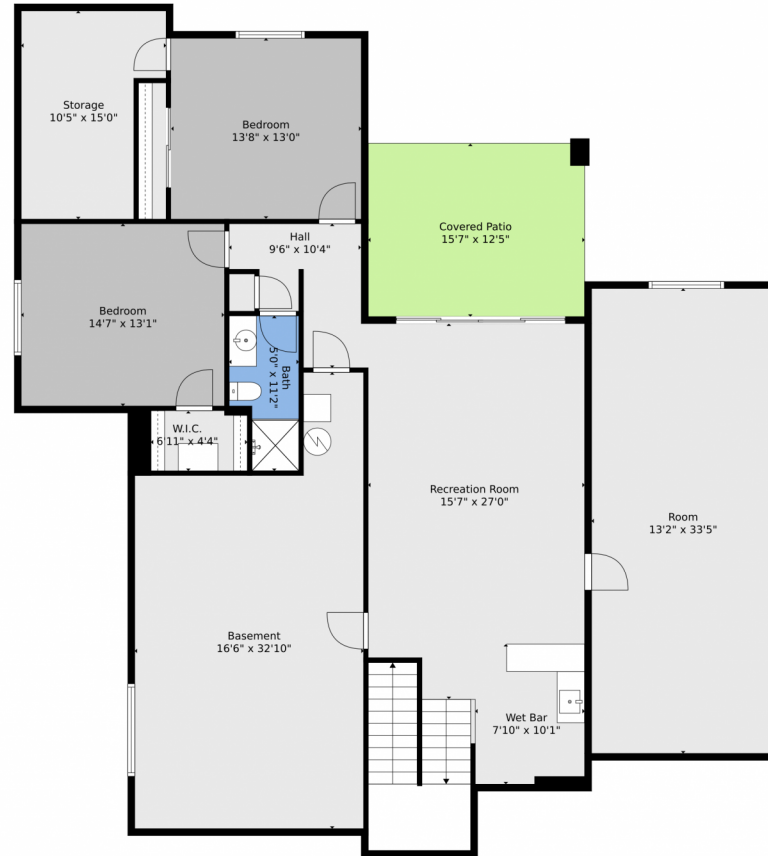
 Single Family  4400 SQFT



Will Story
720-975-7227
Will@StoryHomeGroup.com



13027 Sunrise Ridge Drive, Peyton, CO 80831 – Lower Level



TOTAL: 3365 sq. ft
BELOW GRADE: 1166 sq. ft, 1st floor: 2199 sq. ft
EXCLUDED AREAS: ROOM: 441 sq. ft, STORAGE: 133 sq. ft, COVERED PATIO: 194 sq. ft,
BASEMENT: 450 sq. ft, GARAGE: 842 sq. ft, PORCH: 83 sq. ft,
BALCONY: 282 sq. ft, WALLS: 289 sq. ft

Floor Plan Created By V1photos.com. Measurements Deamed Highly Reliable But Not Guaranteed.



Disclaimer: Sizes and Dimensions are Approximate, Actual May Vary.



Will Story
720-975-7227
Will@StoryHomeGroup.com



13027 Sunrise Ridge Drive, Peyton, CO 80831 – Main Level



TOTAL: 3365 sq. ft
BELOW GRADE: 1166 sq. ft, 1st floor: 2199 sq. ft
EXCLUDED AREAS: ROOM: 441 sq. ft, STORAGE: 133 sq. ft, COVERED PATIO: 194 sq. ft,
BASEMENT: 450 sq. ft, GARAGE: 842 sq. ft, PORCH: 83 sq. ft,
BALCONY: 282 sq. ft, WALLS: 289 sq. ft

Floor Plan Created By V1photos.com. Measurements Deamed Highly Reliable But Not Guaranteed.



Disclaimer: Sizes and Dimensions are Approximate, Actual May Vary.



Will Story
720-975-7227
Will@StoryHomeGroup.com



Scan code
for more
property
details

13027 Sunrise Ridge Drive, Peyton, CO 80831 – All Levels



TOTAL: 3365 sq. ft
 BELOW GRADE: 1166 sq. ft, 1st floor: 2199 sq. ft
 EXCLUDED AREAS: ROOM: 441 sq. ft, STORAGE: 133 sq. ft, COVERED PATIO: 194 sq. ft,
 BASEMENT: 450 sq. ft, GARAGE: 842 sq. ft, PORCH: 83 sq. ft,
 BALCONY: 282 sq. ft, WALLS: 289 sq. ft

Floor Plan Created By V1photos.com. Measurements Deamed Highly Reliable But Not Guaranteed.



Disclaimer: Sizes and Dimensions are Approximate, Actual May Vary.



Will Story
 720-975-7227
 Will@StoryHomeGroup.com



Scan code
 for more
 property
 details

