



Single Family



3600 SQFT



3 Beds



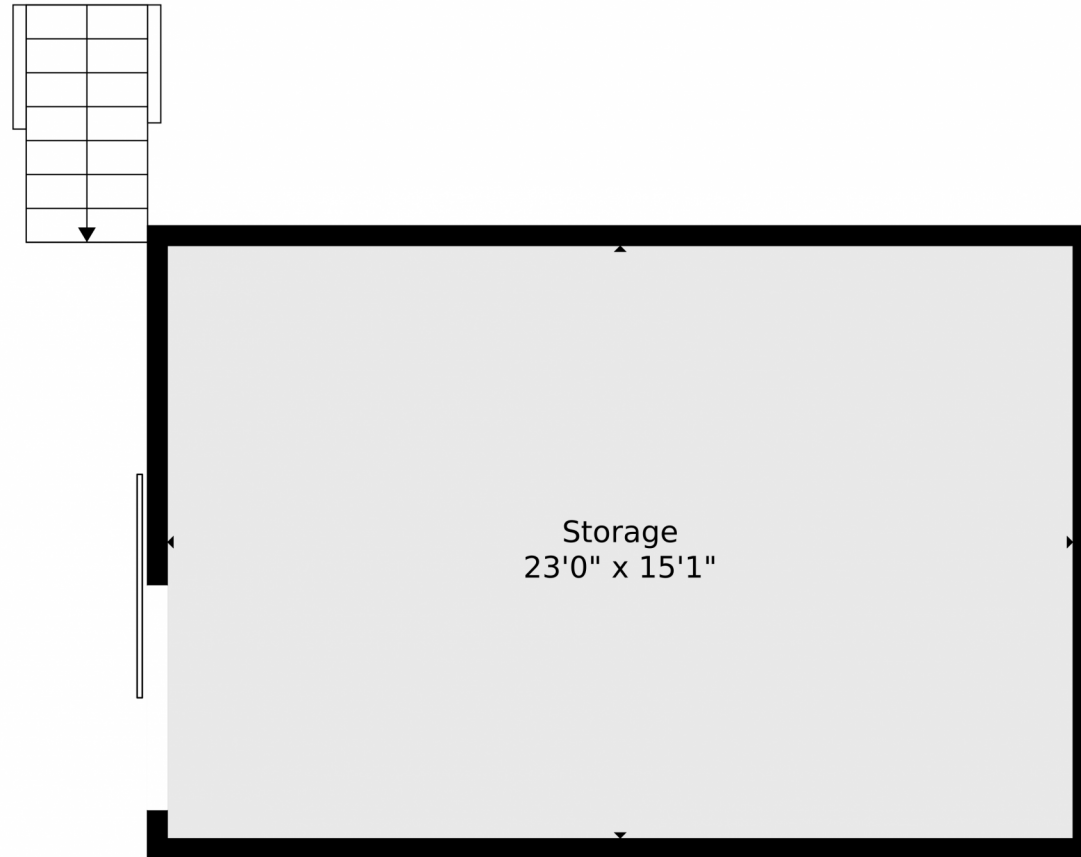
5 Baths



18 Acre



## 31112 Shadow Mountain Drive, conifer, CO 80433 — Storage Shed



**TOTAL: 4308 sq. ft**  
BELOW GROUND: 0 sq. ft, FLOOR 2: 0 sq. ft, FLOOR 3: 565 sq. ft, FLOOR 4: 1956 sq. ft, FLOOR 5: 1505 sq. ft, FLOOR 6: 282 sq. ft  
EXCLUDED AREAS: STORAGE: 796 sq. ft, DECK: 1028 sq. ft, GARAGE: 942 sq. ft,  
ROOM: 323 sq. ft, PORCH: 348 sq. ft, BALCONY: 136 sq. ft,  
OPEN TO BELOW: 456 sq. ft, LOW CEILING: 133 sq. ft  
WALLS: 480 sq. ft

Floor Plan Created By V1photos.com, Measurements Deamed Highly Reliable But Not Guaranteed.



Disclaimer: Sizes and Dimensions are Approximate, Actual May Vary.

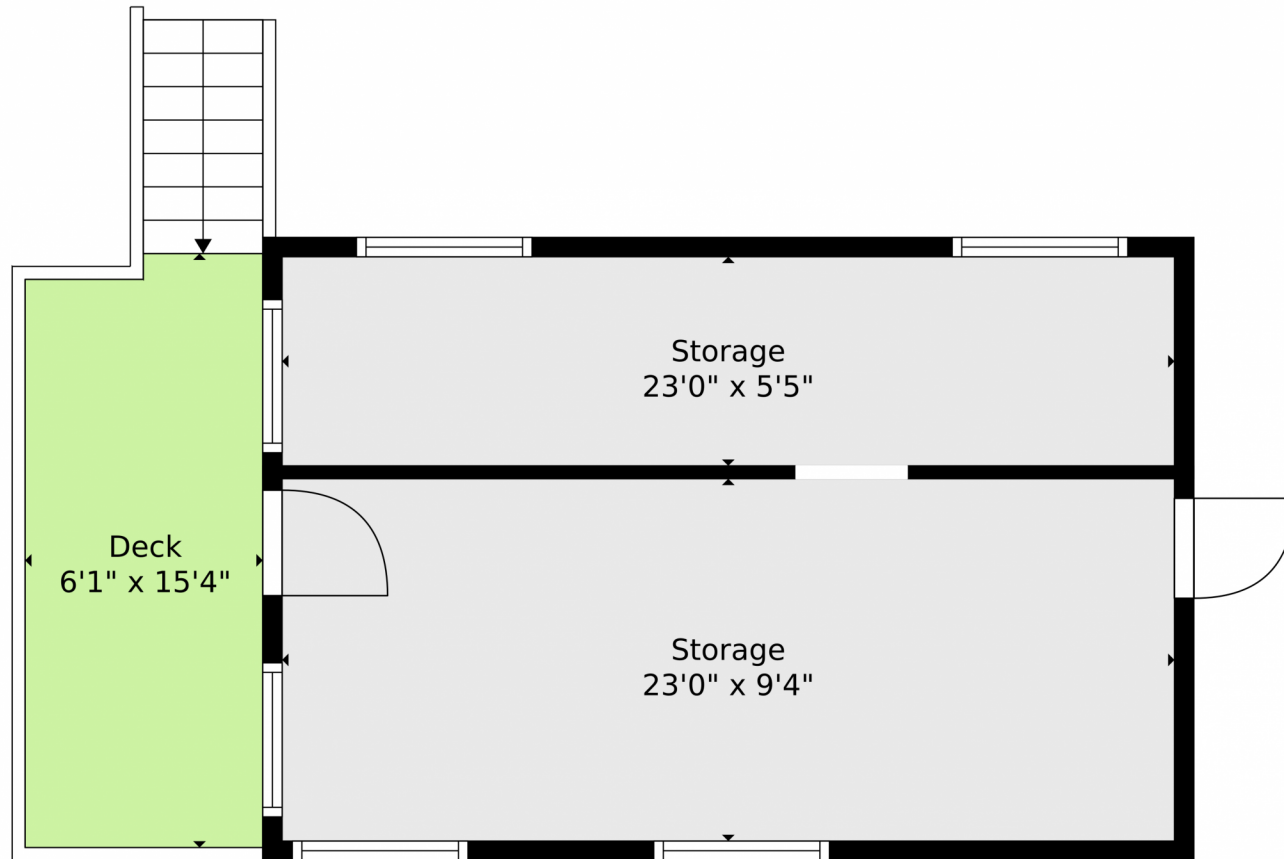
Danny Skelly  
303-503-8793  
danny@orsonhillrealty.com  
<https://orsonhillrealty.com/>



Scan code  
for more  
property  
details



## 31112 Shadow Mountain Drive, conifer, CO 80433 — Storage Shed



**TOTAL: 4308 sq. ft**  
BELOW GROUND: 0 sq. ft, FLOOR 2: 0 sq. ft, FLOOR 3: 565 sq. ft, FLOOR 4: 1956 sq. ft, FLOOR 5: 1505 sq. ft, FLOOR 6: 282 sq. ft  
EXCLUDED AREAS: STORAGE: 796 sq. ft, DECK: 1028 sq. ft, GARAGE: 942 sq. ft,  
ROOM: 323 sq. ft, PORCH: 348 sq. ft, BALCONY: 136 sq. ft,  
OPEN TO BELOW: 456 sq. ft, LOW CEILING: 133 sq. ft  
WALLS: 480 sq. ft

Floor Plan Created By V1photos.com, Measurements Deamed Highly Reliable But Not Guaranteed.



Disclaimer: Sizes and Dimensions are Approximate, Actual May Vary.

Danny Skelly  
303-503-8793  
danny@orsonhillrealty.com  
<https://orsonhillrealty.com/>





## 31112 Shadow Mountain Drive, conifer, CO 80433 — Lower Level



**TOTAL: 4308 sq. ft**

BELOW GROUND: 0 sq. ft, FLOOR 2: 0 sq. ft, FLOOR 3: 565 sq. ft, FLOOR 4: 1956 sq. ft, FLOOR 5: 1505 sq. ft, FLOOR 6: 282 sq. ft  
EXCLUDED AREAS: STORAGE: 796 sq. ft, DECK: 1028 sq. ft, GARAGE: 942 sq. ft,  
ROOM: 323 sq. ft, PORCH: 348 sq. ft, BALCONY: 136 sq. ft,  
OPEN TO BELOW: 456 sq. ft, LOW CEILING: 133 sq. ft  
WALLS: 480 sq. ft

Floor Plan Created By V1photos.com, Measurements Deamed Highly Reliable But Not Guaranteed.



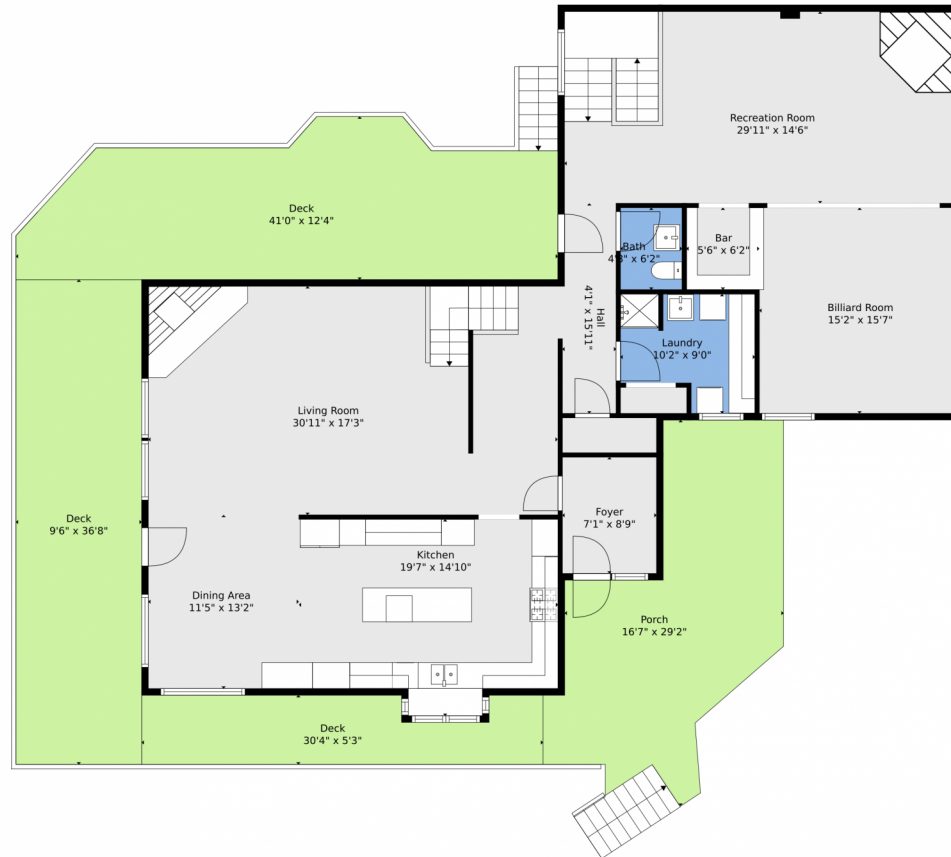
Disclaimer: Sizes and Dimensions are Approximate, Actual May Vary.

Danny Skelly  
303-503-8793  
danny@orsonhillrealty.com  
<https://orsonhillrealty.com/>





# 31112 Shadow Mountain Drive, conifer, CO 80433 — Main



**TOTAL: 4308 sq. ft**

BELOW GROUND: 0 sq. ft, FLOOR 2: 0 sq. ft, FLOOR 3: 565 sq. ft, FLOOR 4: 1956 sq. ft, FLOOR 5: 1505 sq. ft, FLOOR 6: 282 sq. ft  
EXCLUDED AREAS: STORAGE: 796 sq. ft, DECK: 1028 sq. ft, GARAGE: 942 sq. ft,  
ROOM: 323 sq. ft, PORCH: 348 sq. ft, BALCONY: 136 sq. ft,  
OPEN TO BELOW: 456 sq. ft, LOW CEILING: 133 sq. ft  
WALLS: 480 sq. ft

Floor Plan Created By V1photos.com, Measurements Deamed Highly Reliable But Not Guaranteed.



Disclaimer: Sizes and Dimensions are Approximate, Actual May Vary.

Danny Skelly  
303-503-8793  
danny@orsonhillrealty.com  
<https://orsonhillrealty.com/>



Scan code  
for more  
property  
details



# 31112 Shadow Mountain Drive, conifer, CO 80433 — 2nd Level



**TOTAL: 4308 sq. ft**

BELOW GROUND: 0 sq. ft, FLOOR 2: 0 sq. ft, FLOOR 3: 565 sq. ft, FLOOR 4: 1956 sq. ft, FLOOR 5: 1505 sq. ft, FLOOR 6: 282 sq. ft  
 EXCLUDED AREAS: STORAGE: 796 sq. ft, DECK: 1028 sq. ft, GARAGE: 942 sq. ft,  
 ROOM: 323 sq. ft, PORCH: 348 sq. ft, BALCONY: 136 sq. ft,  
 OPEN TO BELOW: 456 sq. ft, LOW CEILING: 133 sq. ft  
 WALLS: 480 sq. ft

Floor Plan Created By V1photos.com, Measurements Deamed Highly Reliable But Not Guaranteed.

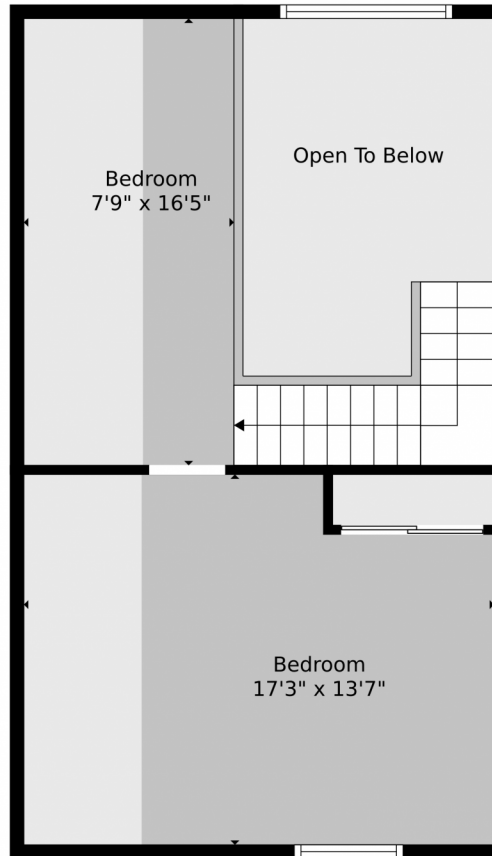


Disclaimer: Sizes and Dimensions are Approximate, Actual May Vary.

Danny Skelly  
 303-503-8793  
 danny@orsonhillrealty.com  
<https://orsonhillrealty.com/>



## 31112 Shadow Mountain Drive, conifer, CO 80433 — 3rd Level



**TOTAL: 4308 sq. ft**

BELOW GROUND: 0 sq. ft, FLOOR 2: 0 sq. ft, FLOOR 3: 565 sq. ft, FLOOR 4: 1956 sq. ft, FLOOR 5: 1505 sq. ft, FLOOR 6: 282 sq. ft  
EXCLUDED AREAS: STORAGE: 796 sq. ft, DECK: 1028 sq. ft, GARAGE: 942 sq. ft,  
ROOM: 323 sq. ft, PORCH: 348 sq. ft, BALCONY: 136 sq. ft,  
OPEN TO BELOW: 456 sq. ft, LOW CEILING: 133 sq. ft  
WALLS: 480 sq. ft

Floor Plan Created By V1photos.com, Measurements Deamed Highly Reliable But Not Guaranteed.



Disclaimer: Sizes and Dimensions are Approximate, Actual May Vary.

Danny Skelly  
303-503-8793  
danny@orsonhillrealty.com  
<https://orsonhillrealty.com/>



Scan code  
for more  
property  
details



# 31112 Shadow Mountain Drive, conifer, CO 80433 — All Levels



**TOTAL: 4308 sq. ft**  
 BELOW GROUND: 0 sq. ft, FLOOR 2: 0 sq. ft, FLOOR 3: 565 sq. ft, FLOOR 4: 1956 sq. ft, FLOOR 5: 1505 sq. ft, FLOOR 6: 282 sq. ft  
 EXCLUDED AREAS: STORAGE: 796 sq. ft, DECK: 1028 sq. ft, GARAGE: 942 sq. ft,  
 ROOM: 323 sq. ft, PORCH: 348 sq. ft, BALCONY: 136 sq. ft,  
 OPEN TO BELOW: 456 sq. ft, LOW CEILING: 133 sq. ft  
 WALLS: 480 sq. ft

Floor Plan Created By V1photos.com, Measurements Deamed Highly Reliable But Not Guaranteed.

Disclaimer: Sizes and Dimensions are Approximate, Actual May Vary.

Danny Skelly  
 303-503-8793  
 danny@orsonhillrealty.com  
<https://orsonhillrealty.com/>

