

Beautifully updated townhome!



Townhouse



1172 SQFT



2 Beds



1 Baths



2 Car



0.03 Acre

PROPERTY DETAILS

Welcome to this beautifully maintained end-unit townhome in the desirable Chambers Ridge community! The bright living room features wood-style flooring, vaulted ceilings, and a stunning chandelier. Natural light floods in through skylights, enhancing the cozy atmosphere with a gas fireplace. The open floor plan connects the living area to the dining space, ideal for gatherings. The updated kitchen includes stainless steel appliances and a stylish tile backsplash. Upstairs, find two spacious bedrooms, a fully updated bathroom, and a versatile loft. The full unfinished basement offers storage or expansion potential. Enjoy the private patio and a two-car garage. Residents have access to a community pool and clubhouse, with convenient access to shopping and major highways. Don't miss this exceptional home!



Beth Gibson
720-849-3577
bethgibson@kw.com
<https://bethgibson.kw.com/>



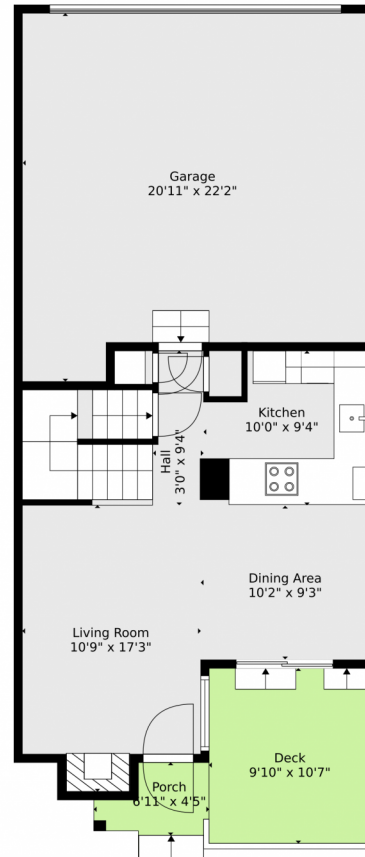
Phil Gibson
303-325-6020
philgibson@kw.com
<https://unitygroup.kw.com/>



Scan code
for more
property
details



2021 South Hannibal Way, Aurora, CO 80013 — Main



TOTAL: 1075 sq. ft
BELOW GROUND: 0 sq. ft, FLOOR 2: 440 sq. ft, FLOOR 3: 635 sq. ft
EXCLUDED AREAS: BASEMENT: 460 sq. ft, GARAGE: 427 sq. ft, DECK: 104 sq. ft,
PORCH: 29 sq. ft, FIREPLACE: 11 sq. ft, OPEN TO BELOW: 242 sq. ft
WALLS: 190 sq. ft

Floor Plan Created By V1photos.com, Measurements Deamed Highly Reliable But Not Guaranteed.



Disclaimer: Sizes and Dimensions are Approximate, Actual May Vary.



Beth Gibson
720-849-3577
bethgibson@kw.com
<https://bethgibson.kw.com/>



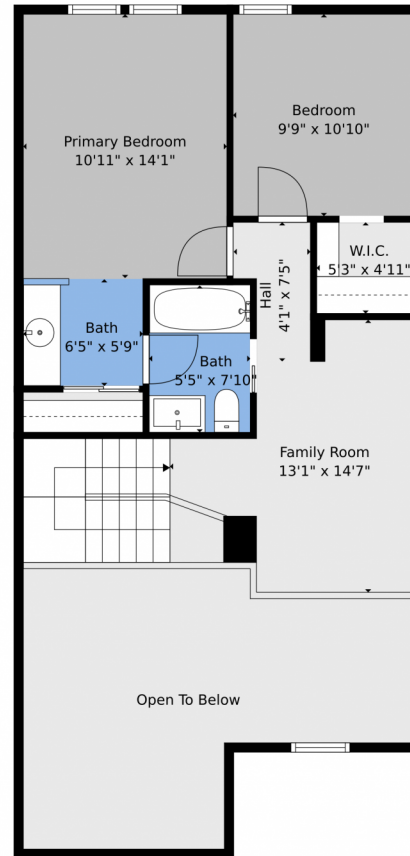
Phil Gibson
303-325-6020
philgibson@kw.com
<https://unitygroup.kw.com/>



Scan code
for more
property
details



2021 South Hannibal Way, Aurora, CO 80013 — 2nd Level



TOTAL: 1075 sq. ft
BELOW GROUND: 0 sq. ft, FLOOR 2: 440 sq. ft, FLOOR 3: 635 sq. ft
EXCLUDED AREAS: BASEMENT: 460 sq. ft, GARAGE: 427 sq. ft, DECK: 104 sq. ft,
PORCH: 29 sq. ft, FIREPLACE: 11 sq. ft, OPEN TO BELOW: 242 sq. ft
WALLS: 190 sq. ft

Floor Plan Created By V1photos.com, Measurements Deamed Highly Reliable But Not Guaranteed.



Disclaimer: Sizes and Dimensions are Approximate, Actual May Vary.



Beth Gibson
720-849-3577
bethgibson@kw.com
<https://bethgibson.kw.com/>



Phil Gibson
303-325-6020
philgibson@kw.com
<https://unitygroup.kw.com/>



Scan code
for more
property
details

