

Single Family



1846 SQFT



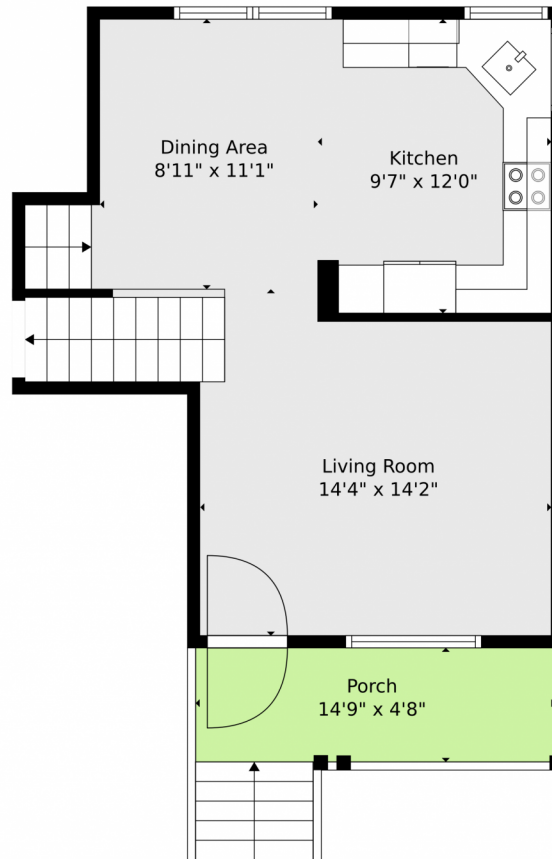
**Kochie Aslamy**  
720-434-5904  
kochie.aslamy@kw.com



Scan code  
for more  
property  
details



## 1288 South Beeler Court, Denver, CO 80247 — Main



**TOTAL: 1742 sq. ft**  
BELOW GROUND: 302 sq. ft, FLOOR 2: 274 sq. ft, FLOOR 3: 446 sq. ft, FLOOR 4: 720 sq. ft  
EXCLUDED AREAS: UTILITY: 50 sq. ft, GARAGE: 406 sq. ft, PATIO: 131 sq. ft,  
PORCH: 88 sq. ft  
WALLS: 207 sq. ft

Floor Plan Created By V1photos.com, Measurements Deamed Highly Reliable But Not Guaranteed.



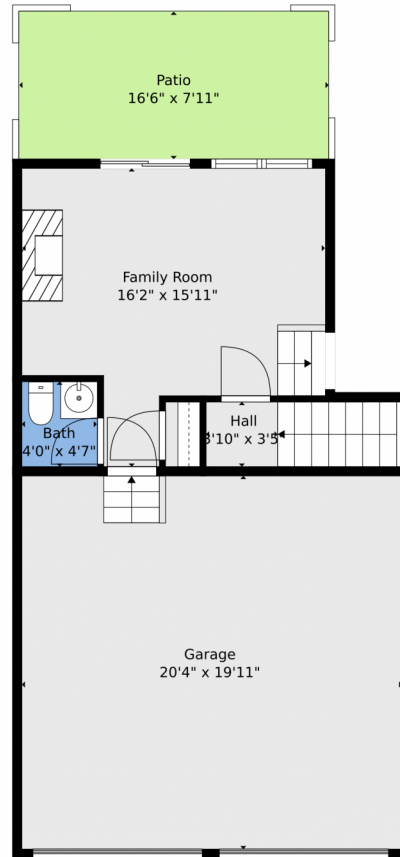
Disclaimer: Sizes and Dimensions are Approximate, Actual May Vary.



**Kochie Aslamy**  
720-434-5904  
kochie.aslamy@kw.com



# 1288 South Beeler Court, Denver, CO 80247 — Main



**TOTAL: 1742 sq. ft**  
BELOW GROUND: 302 sq. ft, FLOOR 2: 274 sq. ft, FLOOR 3: 446 sq. ft, FLOOR 4: 720 sq. ft  
EXCLUDED AREAS: UTILITY: 50 sq. ft, GARAGE: 406 sq. ft, PATIO: 131 sq. ft,  
PORCH: 88 sq. ft  
WALLS: 207 sq. ft

Floor Plan Created By V1photos.com, Measurements Deamed Highly Reliable But Not Guaranteed.



Disclaimer: Sizes and Dimensions are Approximate, Actual May Vary.

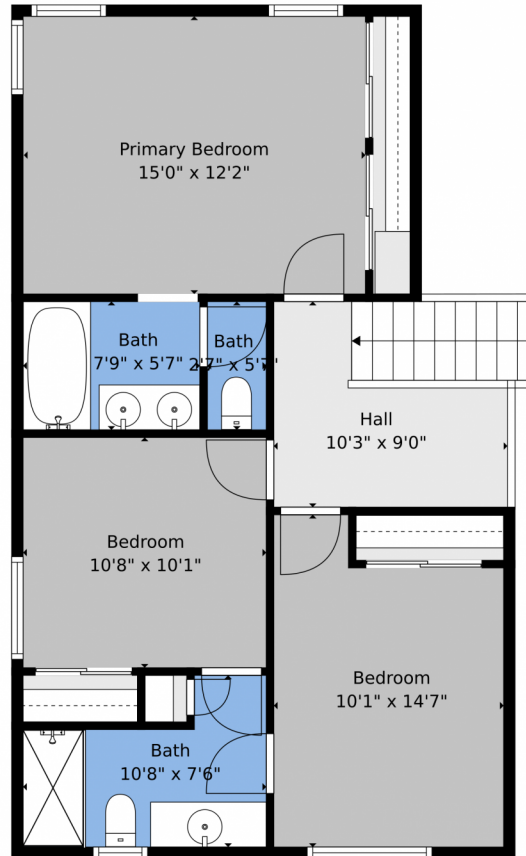


**Kochie Aslamy**  
720-434-5904  
kochie.aslamy@kw.com





## 1288 South Beeler Court, Denver, CO 80247 – 2nd Level



**TOTAL: 1742 sq. ft**  
BELOW GROUND: 302 sq. ft, FLOOR 2: 274 sq. ft, FLOOR 3: 446 sq. ft, FLOOR 4: 720 sq. ft  
EXCLUDED AREAS: UTILITY: 50 sq. ft, GARAGE: 406 sq. ft, PATIO: 131 sq. ft,  
PORCH: 88 sq. ft  
WALLS: 207 sq. ft

Floor Plan Created By V1photos.com, Measurements Deamed Highly Reliable But Not Guaranteed.



Disclaimer: Sizes and Dimensions are Approximate, Actual May Vary.



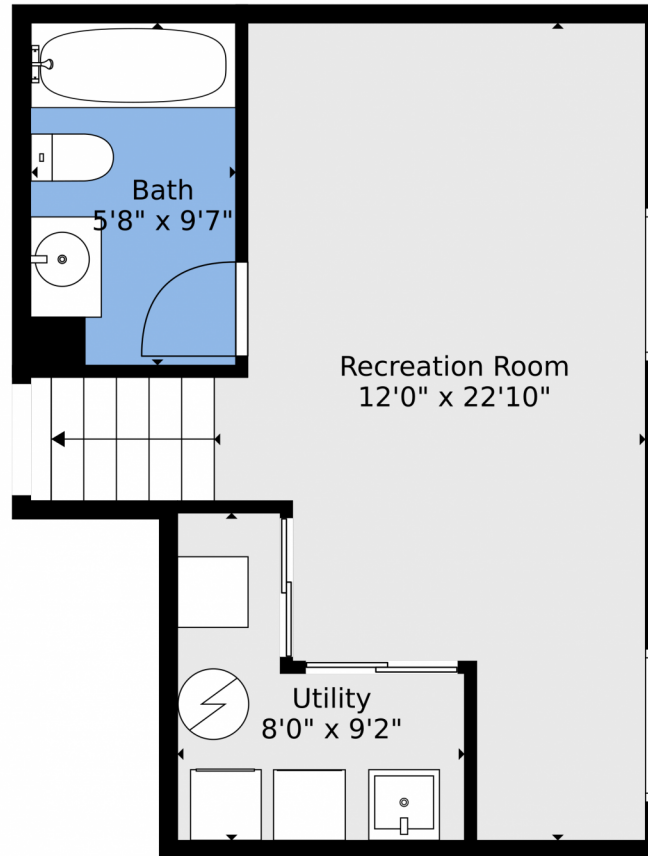
**Kochie Aslamy**  
720-434-5904  
kochie.aslamy@kw.com



Scan code  
for more  
property  
details



## 1288 South Beeler Court, Denver, CO 80247 — Lower Level



**TOTAL: 1742 sq. ft**  
BELOW GROUND: 302 sq. ft, FLOOR 2: 274 sq. ft, FLOOR 3: 446 sq. ft, FLOOR 4: 720 sq. ft  
EXCLUDED AREAS: UTILITY: 50 sq. ft, GARAGE: 406 sq. ft, PATIO: 131 sq. ft,  
PORCH: 88 sq. ft  
WALLS: 207 sq. ft

Floor Plan Created By V1photos.com, Measurements Deamed Highly Reliable But Not Guaranteed.



Disclaimer: Sizes and Dimensions are Approximate, Actual May Vary.



**Kochie Aslamy**  
720-434-5904  
kochie.aslamy@kw.com



# 1288 South Beeler Court, Denver, CO 80247 — All Levels



**TOTAL: 1742 sq. ft**  
BELOW GROUND: 302 sq. ft, FLOOR 2: 274 sq. ft, FLOOR 3: 446 sq. ft, FLOOR 4: 720 sq. ft  
EXCLUDED AREAS: UTILITY: 50 sq. ft, GARAGE: 406 sq. ft, PATIO: 131 sq. ft,  
PORCH: 88 sq. ft  
WALLS: 207 sq. ft

Floor Plan Created By V1photos.com, Measurements Deamed Highly Reliable But Not Guaranteed.



Disclaimer: Sizes and Dimensions are Approximate, Actual May Vary.



**Kochie Aslamy**  
720-434-5904  
kochie.aslamy@kw.com



Scan code  
for more  
property  
details

