



4680 Mimosa Place
Coconut Creek, FL 33073
COMMUNITY: Paloma Lakes

MLS # F10512858



Condominium



1669 SQFT



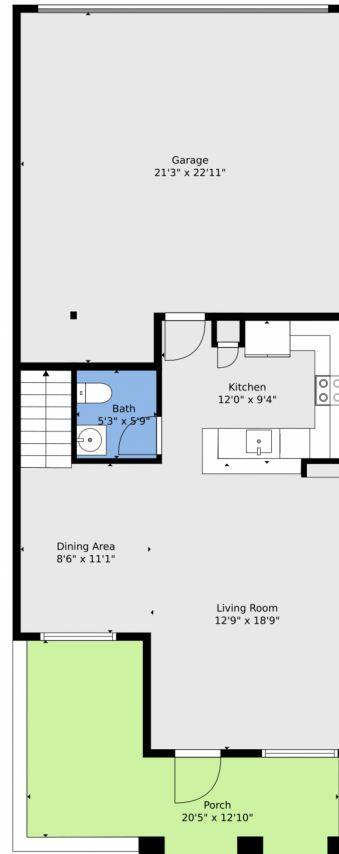
Michael Topow
954-588-0379
mtopow@kw.com



Scan code
for more
property
details



4680 Mimosa Place, Coconut Creek, FL 33073 — Main



TOTAL: 1464 sq. ft
FLOOR 1: 502 sq. ft, FLOOR 2: 962 sq. ft
EXCLUDED AREAS: PORCH: 180 sq. ft, GARAGE: 447 sq. ft, BALCONY: 86 sq. ft
WALLS: 153 sq. ft

Floor Plan Created By V1photos.com, Measurements Deamed Highly Reliable But Not Guaranteed.



Disclaimer: Sizes and Dimensions are Approximate, Actual May Vary.



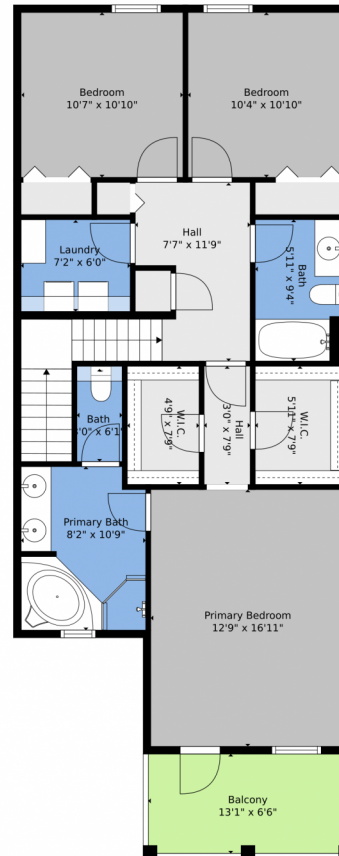
Michael Topow
954-588-0379
mtopow@kw.com



Scan code
for more
property
details



4680 Mimosa Place, Coconut Creek, FL 33073 — 2nd Level



TOTAL: 1464 sq. ft
FLOOR 1: 502 sq. ft, FLOOR 2: 962 sq. ft
EXCLUDED AREAS: PORCH: 180 sq. ft, GARAGE: 447 sq. ft, BALCONY: 86 sq. ft
WALLS: 153 sq. ft

Floor Plan Created By V1photos.com, Measurements Deamed Highly Reliable But Not Guaranteed.



Disclaimer: Sizes and Dimensions are Approximate, Actual May Vary.



Michael Topow
954-588-0379
mtopow@kw.com



Scan code
for more
property
details



4680 Mimosa Place, Coconut Creek, FL 33073 — All Levels



TOTAL: 1464 sq. ft
FLOOR 1: 502 sq. ft, FLOOR 2: 962 sq. ft
EXCLUDED AREAS: PORCH: 180 sq. ft, GARAGE: 447 sq. ft, BALCONY: 86 sq. ft
WALLS: 153 sq. ft

Floor Plan Created By V1photos.com, Measurements Deamed Highly Reliable But Not Guaranteed.



Disclaimer: Sizes and Dimensions are Approximate, Actual May Vary.



Michael Topow
954-588-0379
mtopow@kw.com



Scan code
for more
property
details

