



350 Tower Hill Circle
Golden, CO 80401
COMMUNITY: Mt. Vernon Canyon Club

MLS # 8664134
PRICE \$1,295,000

Sky Haven: Your Story Starts Here. A Place to Gather, A Place to Roam.



Single Family



3414 SQFT



4 Beds



2/1 Baths



3 Car



1.19 Acre

PROPERTY DETAILS

Welcome to Sky Haven, a unique mountain retreat in historic Mount Vernon Country Club. Built in 1922, this charming home features vaulted ceilings and stunning views. It includes 3 spacious bedrooms, 2 remodeled bathrooms, and a guest cabin with a kitchenette and bath. A detached 3-car garage offers ample storage. Enjoy outdoor entertaining under a large pavilion with a historic stone fireplace. The property provides access to 1,000 acres of open space, hiking trails, and a community horse facility. Club amenities include dining, a pool, tennis, and pickleball courts. A Social Membership is required (\$78/month), with a Metro District fee of \$418/month for utilities. Sky Haven is more than a home—it's a lifestyle.



Jennifer Story
720-280-6224

jenstoryrealestate@gmail.com
<https://jenstory.fathomrealty.com>



Scan code
for more
property
details



350 Tower Hill Circle, Golden, CO 80401 — Main



TOTAL: 2976 sq. ft
BELOW GROUND: 0 sq. ft, FLOOR 2: 554 sq. ft, FLOOR 3: 112 sq. ft, FLOOR 4: 0 sq. ft, FLOOR 5: 2310 sq. ft, FLOOR 6: 0 sq. ft
EXCLUDED AREAS: GARAGE: 761 sq. ft, STORAGE: 286 sq. ft, PATIO: 605 sq. ft,
PORCH: 111 sq. ft, SHED: 48 sq. ft, SUNROOM: 139 sq. ft,
DECK: 591 sq. ft, COVERED PATIO: 626 sq. ft
WALLS: 296 sq. ft

Floor Plan Created By V1photos.com, Measurements Deamed Highly Reliable But Not Guaranteed.



Disclaimer: Sizes and Dimensions are Approximate, Actual May Vary.



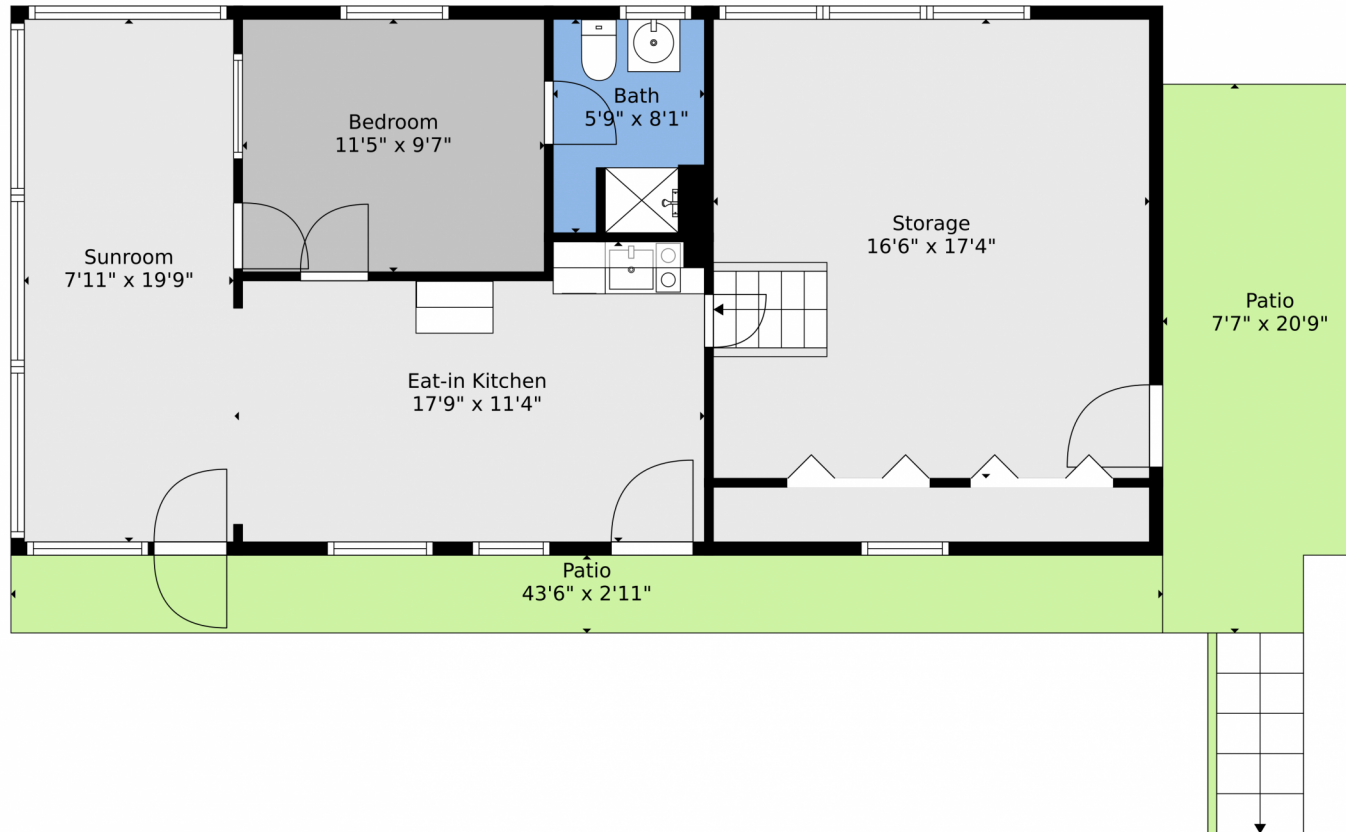
Jennifer Story
720-280-6224
jenstoryrealestate@gmail.com
<https://jenstory.fathomrealty.com>



Scan code
for more
property
details



350 Tower Hill Circle, Golden, CO 80401 — Cabin



TOTAL: 2976 sq. ft
BELOW GROUND: 0 sq. ft, FLOOR 2: 554 sq. ft, FLOOR 3: 112 sq. ft, FLOOR 4: 0 sq. ft, FLOOR 5: 2310 sq. ft, FLOOR 6: 0 sq. ft
EXCLUDED AREAS: GARAGE: 761 sq. ft, STORAGE: 286 sq. ft, PATIO: 605 sq. ft,
PORCH: 111 sq. ft, SHED: 48 sq. ft, SUNROOM: 139 sq. ft,
DECK: 591 sq. ft, COVERED PATIO: 626 sq. ft
WALLS: 296 sq. ft

Floor Plan Created By V1photos.com, Measurements Deamed Highly Reliable But Not Guaranteed.

Disclaimer: Sizes and Dimensions are Approximate, Actual May Vary.



Jennifer Story
720-280-6224
jenstoryrealestate@gmail.com
<https://jenstory.fathomrealty.com>



Scan code
for more
property
details

