



Condominium



1264 SQFT



2 Beds



2 Baths



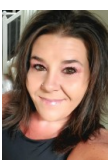
2 Car



0.11 Acre

## PROPERTY DETAILS

Rarely available end-unit Ranch style townhome in Stratford Lakes/College Hills!! The fully fenced beautiful courtyard patio welcomes you as you step inside. One-level living includes beautiful hardwood flooring, spacious open kitchen with dining room, large living room with gas fireplace, primary suite with attached 5-piece bath and large walk-in closet, secondary bedroom full bath and conveniently located main level laundry. High vaulted ceilings, new paint throughout, light, bright and open. Opportunity to create additional living space in unfinished basement. 2-car attached garage and maintenance free living. Handicap/wheelchair accessible features throughout including kitchen, primary bath, ramp, chairlifts and more. Gorgeous community features including clubhouse, pool, tennis courts, and trails. Ready for move-in and quick possession available!!



**RaNae Rodriguez**

303-875-4091

[ra-nae@mscadvisors.com](mailto:ra-nae@mscadvisors.com)

<http://www.mscadvisors.com>



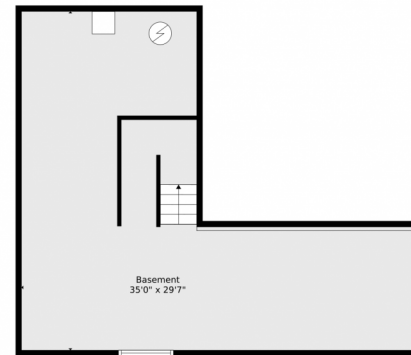
Scan code  
for more  
property  
details



# 11268 Grove St. Unit I, Westminster, CO 80031 — All Levels



Floor 2



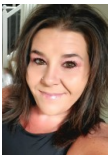
Floor 1

**TOTAL: 1188 sq. ft**  
BELOW GROUND: 0 sq. ft, FLOOR 2: 1188 sq. ft  
EXCLUDED AREAS: BASEMENT: 664 sq. ft, GARAGE: 393 sq. ft, PATIO: 666 sq. ft,  
PORCH: 61 sq. ft  
WALLS: 175 sq. ft

Floor Plan Created By V1photos.com, Measurements Deamed Highly Reliable But Not Guaranteed.



Disclaimer: Sizes and Dimensions are Approximate, Actual May Vary.



**RaNae Rodriguez**  
303-875-4091  
ranae@mscadvisors.com  
<http://www.mscadvisors.com>



Scan code  
for more  
property  
details