

Portosol 5 Bed 4.5 Bath 2 Car Garage! Plenty of Space. Great Location!



Single Family



4420 SQFT



5 Beds



4/1 Baths



2 Car



0.24 Acre

PROPERTY DETAILS

This stunning 5-bedroom, 4.5-bath waterfront home features a main-floor master and a private upstairs retreat. Set in a sought-after community, it offers a perfect blend of space and comfort, ideal for multi-generational living. The main level boasts an open floor plan with soaring ceilings and water views. The spacious kitchen includes granite countertops, a center island, pantry, and stainless steel appliances, seamlessly connecting to the family room and breakfast area for effortless entertaining.



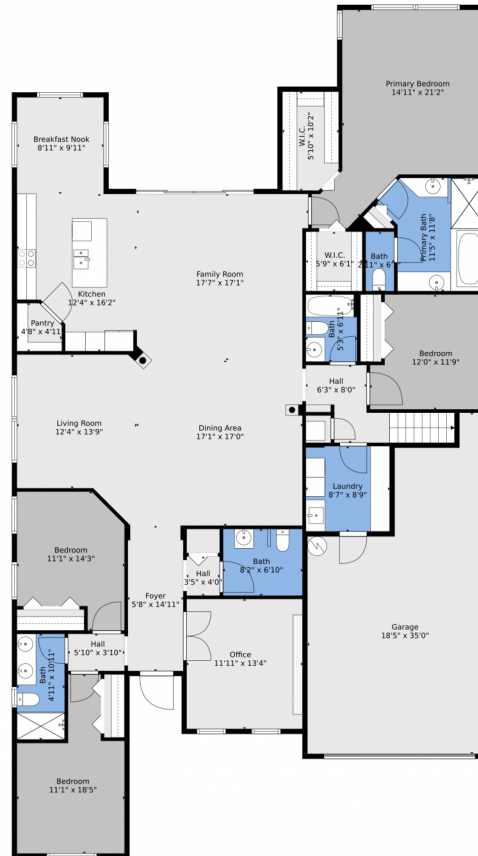
Scott Tennell
561-714-5248
scott@flmar.com



Scan code
for more
property
details



2539 Vicara Court, Royal Palm Beach, FL 33411 — Main



TOTAL: 3351 sq. ft
FLOOR 1: 2704 sq. ft, FLOOR 2: 647 sq. ft
EXCLUDED AREAS: GARAGE: 509 sq. ft
WALLS: 233 sq. ft

Floor Plan Created By V1photos.com, Measurements Deamed Highly Reliable But Not Guaranteed.



Disclaimer: Sizes and Dimensions are Approximate, Actual May Vary.



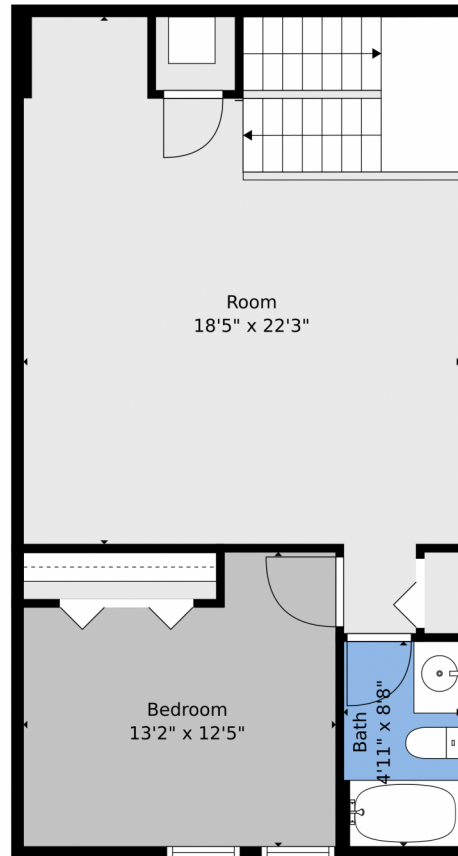
Scott Tennell
561-714-5248
scott@flmar.com



Scan code
for more
property
details



2539 Vicara Court, Royal Palm Beach, FL 33411 — 2nd Level



TOTAL: 3351 sq. ft
FLOOR 1: 2704 sq. ft, FLOOR 2: 647 sq. ft
EXCLUDED AREAS: GARAGE: 509 sq. ft
WALLS: 233 sq. ft

Floor Plan Created By V1photos.com, Measurements Deamed Highly Reliable But Not Guaranteed.



Disclaimer: Sizes and Dimensions are Approximate, Actual May Vary.



Scott Tennell
561-714-5248
scott@flmar.com



Scan code
for more
property
details



2539 Vicara Court, Royal Palm Beach, FL 33411 — All Levels



TOTAL: 3351 sq. ft
FLOOR 1: 2704 sq. ft, FLOOR 2: 647 sq. ft
EXCLUDED AREAS: GARAGE: 509 sq. ft
WALLS: 233 sq. ft

Floor Plan Created By V1photos.com, Measurements Deamed Highly Reliable But Not Guaranteed.



Disclaimer: Sizes and Dimensions are Approximate, Actual May Vary.



Scott Tennell
561-714-5248
scott@flmar.com

