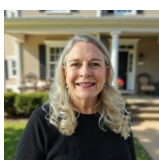


 Single Family
  2638 SQFT
  5 Beds
  2/1 Baths
  2 Car
  0.1 Acre

PROPERTY DETAILS

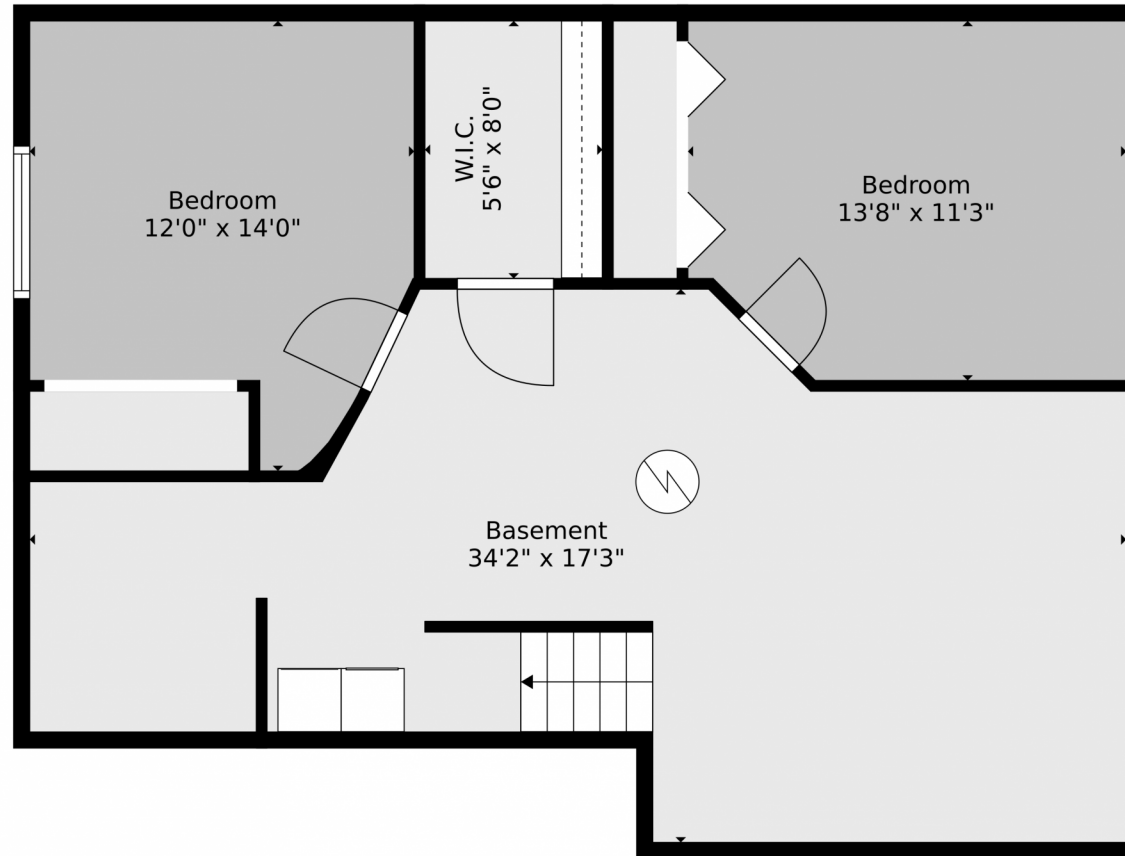
This home features a beautifully remodeled kitchen on the main floor, complete with a large island and java shaker cabinets. Highlights include granite countertops, recessed and under-cabinet lighting, and a gas stove with dual ovens. The main level has upgraded LVP flooring, paint, and fixtures. A shed in the backyard offers extra storage, and a metal canopy frame is included for outdoor entertaining. Flexible laundry options are available on the upper level, in the basement, or both. Upstairs, the Primary Bedroom has a vaulted ceiling, walk-in closet, and a vanity with double sinks. Two additional bedrooms include one with a Murphy bed. The basement features two finished bedrooms, a bathroom rough-in, and an unfinished space for a family room. This home does not back to a main road.



Marianne Hayes Smith
303-915-0287
MarianneSellsHomes@msn.com
<https://www.coloradohomesmith.realtor/>



11355 Haswell Drive, Parker, CO 80134 – Basement



TOTAL: 2104 sq. ft
BELOW GROUND: 387 sq. ft, FLOOR 2: 874 sq. ft, FLOOR 3: 843 sq. ft
EXCLUDED AREAS: BASEMENT: 423 sq. ft, GARAGE: 375 sq. ft, PORCH: 31 sq. ft,
PATIO: 367 sq. ft, OPEN TO BELOW: 362 sq. ft
WALLS: 234 sq. ft

Floor Plan Created By V1photos.com, Measurements Deamed Highly Reliable But Not Guaranteed.



Disclaimer: Sizes and Dimensions are Approximate, Actual May Vary.



Marianne Hayes Smith

303-915-0287

MarianneSellsHomes@msn.com

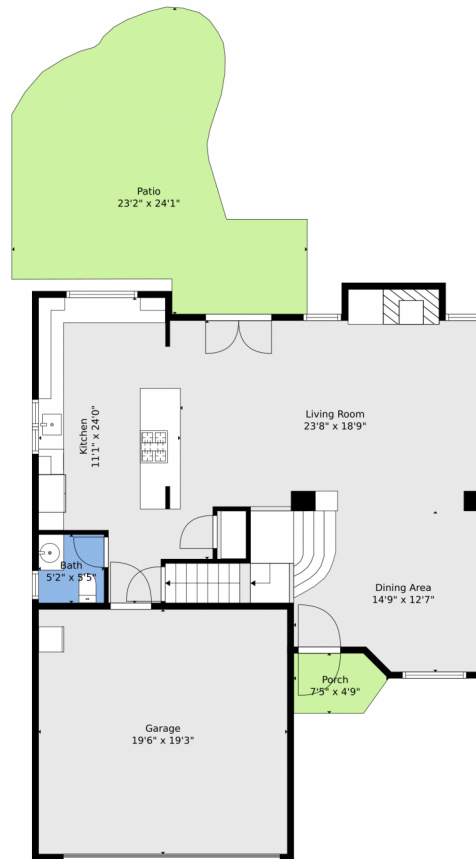
<https://www.coloradahomesmith.realtor/>



Scan code
for more
property
details



11355 Haswell Drive, Parker, CO 80134 — Main



TOTAL: 2104 sq. ft
BELOW GROUND: 387 sq. ft, FLOOR 2: 874 sq. ft, FLOOR 3: 843 sq. ft
EXCLUDED AREAS: BASEMENT: 423 sq. ft, GARAGE: 375 sq. ft, PORCH: 31 sq. ft,
PATIO: 367 sq. ft, OPEN TO BELOW: 362 sq. ft
WALLS: 234 sq. ft

Floor Plan Created By V1photos.com, Measurements Deamed Highly Reliable But Not Guaranteed.



Disclaimer: Sizes and Dimensions are Approximate, Actual May Vary.



Marianne Hayes Smith

303-915-0287

MarianneSellsHomes@msn.com

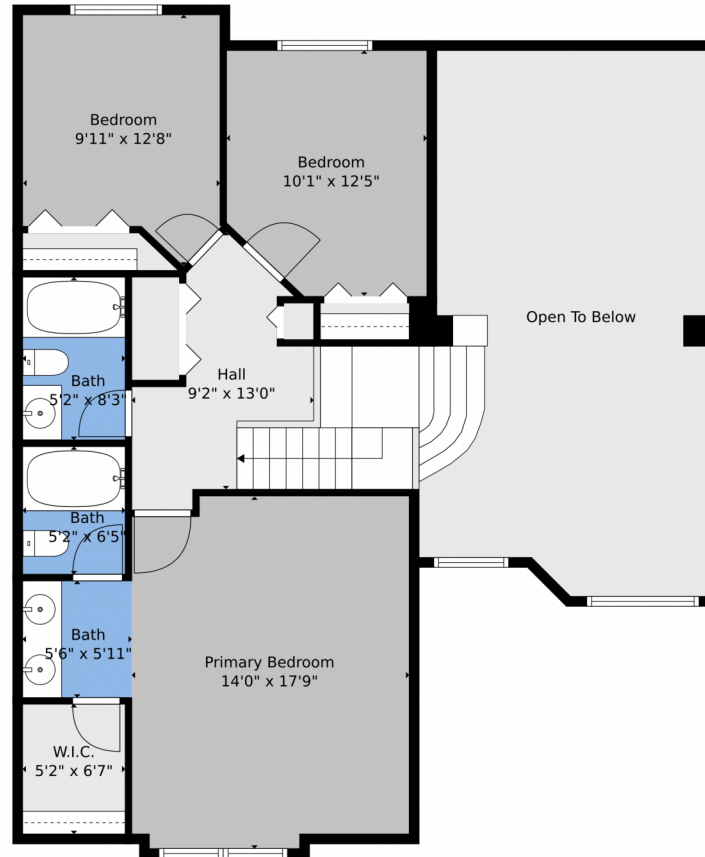
<https://www.coloradohomesmith.realtor/>



Scan code
for more
property
details



11355 Haswell Drive, Parker, CO 80134 – 2nd Level



TOTAL: 2104 sq. ft
BELOW GROUND: 387 sq. ft, FLOOR 2: 874 sq. ft, FLOOR 3: 843 sq. ft
EXCLUDED AREAS: BASEMENT: 423 sq. ft, GARAGE: 375 sq. ft, PORCH: 31 sq. ft,
PATIO: 367 sq. ft, OPEN TO BELOW: 362 sq. ft
WALLS: 234 sq. ft

Floor Plan Created By V1photos.com, Measurements Deamed Highly Reliable But Not Guaranteed.



Disclaimer: Sizes and Dimensions are Approximate, Actual May Vary.



Marianne Hayes Smith

303-915-0287

MarianneSellsHomes@msn.com

<https://www.coloradohomesmith.realtor/>



Scan code
for more
property
details



11355 Haswell Drive, Parker, CO 80134 — All Levels



TOTAL: 2104 sq. ft
BELOW GROUND: 387 sq. ft, FLOOR 2: 874 sq. ft, FLOOR 3: 843 sq. ft
EXCLUDED AREAS: BASEMENT: 423 sq. ft, GARAGE: 375 sq. ft, PORCH: 31 sq. ft,
PATIO: 367 sq. ft, OPEN TO BELOW: 362 sq. ft
WALLS: 234 sq. ft

Floor Plan Created By V1photos.com, Measurements Deamed Highly Reliable But Not Guaranteed.



Disclaimer: Sizes and Dimensions are Approximate, Actual May Vary.



Marianne Hayes Smith

303-915-0287

MarianneSellsHomes@msn.com

<https://www.coloradohomesmith.realtor/>



Scan code
for more
property
details

