

5221 Longshaw Court #3
Windsor, CO 80528
COMMUNITY: Country Farms Village



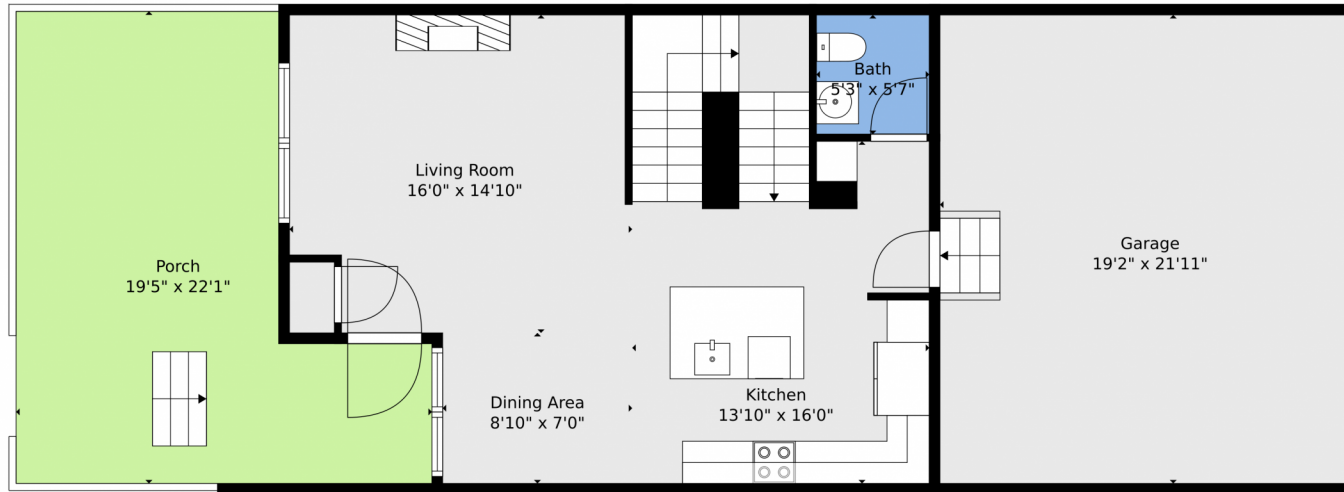
 Townhouse  1586 SQFT  3 Beds  2/1 Baths  2 Car



Suzanne Ekeler
970-590-4841
suzanne@ekelerrealestate.com



5221 Longshaw Court #3, Windsor, CO 80528 — Main



TOTAL: 2049 sq. ft
BELOW GROUND: 518 sq. ft, FLOOR 2: 603 sq. ft, FLOOR 3: 928 sq. ft
EXCLUDED AREAS: UTILITY: 41 sq. ft, GARAGE: 419 sq. ft, PORCH: 317 sq. ft
WALLS: 208 sq. ft

Floor Plan Created By V1photos.com, Measurements Deamed Highly Reliable But Not Guaranteed.



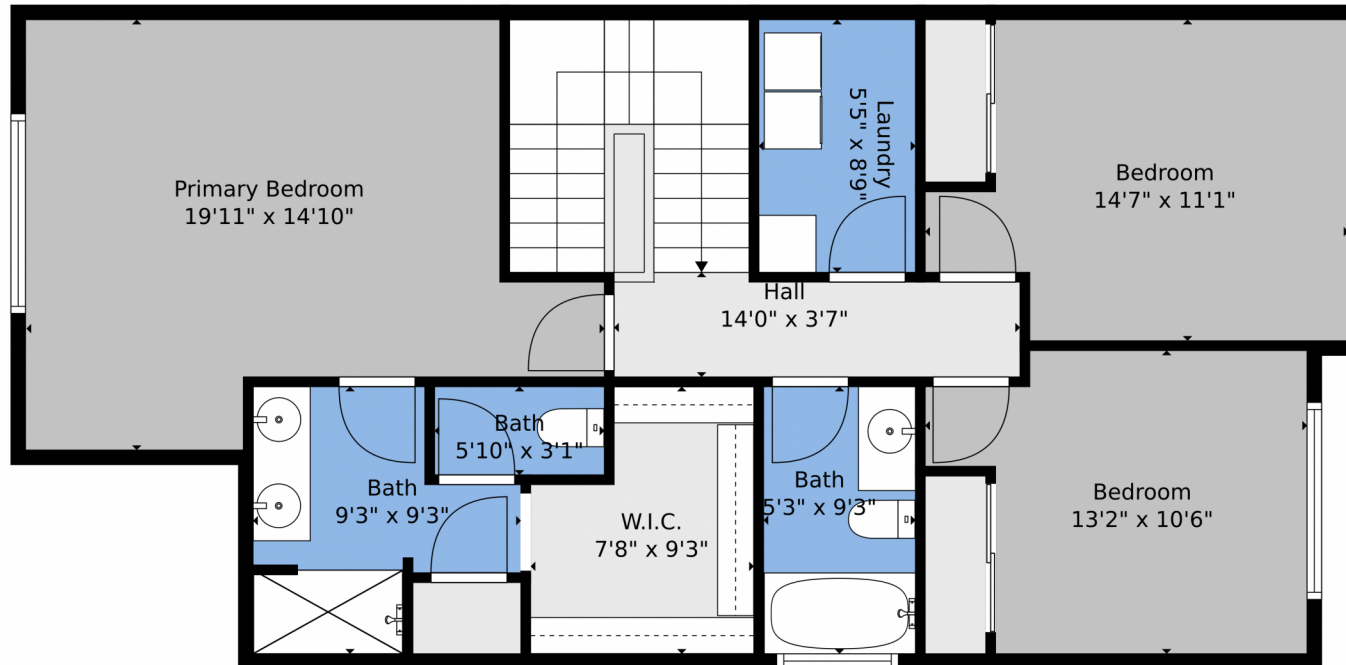
Disclaimer: Sizes and Dimensions are Approximate, Actual May Vary.



Suzanne Ekeler
970-590-4841
suzanne@ekelerrealestate.com



5221 Longshaw Court #3, Windsor, CO 80528 — 2nd Level



TOTAL: 2049 sq. ft
BELOW GROUND: 518 sq. ft, FLOOR 2: 603 sq. ft, FLOOR 3: 928 sq. ft
EXCLUDED AREAS: UTILITY: 41 sq. ft, GARAGE: 419 sq. ft, PORCH: 317 sq. ft
WALLS: 208 sq. ft

Floor Plan Created By V1photos.com, Measurements Deamed Highly Reliable But Not Guaranteed.



Disclaimer: Sizes and Dimensions are Approximate, Actual May Vary.



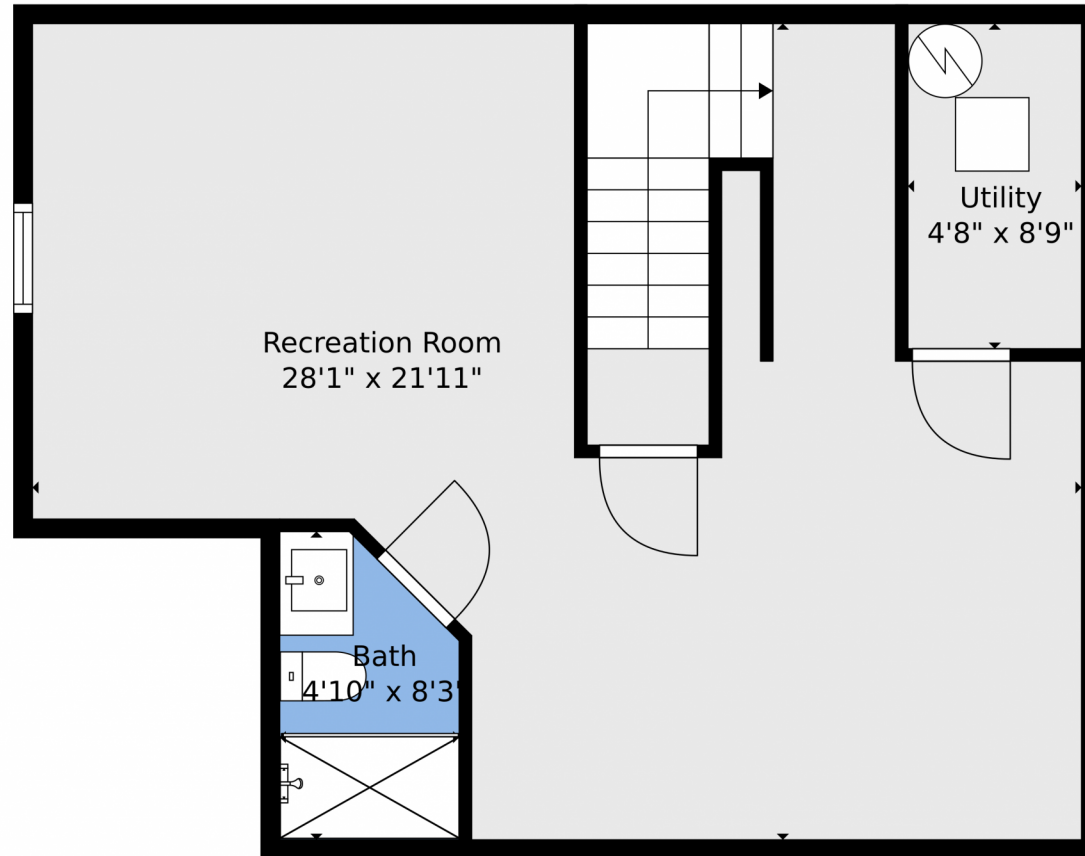
Suzanne Ekeler
970-590-4841
suzanne@ekelerrealestate.com



Scan code
for more
property
details



5221 Longshaw Court #3, Windsor, CO 80528 — Lower Level



TOTAL: 2049 sq. ft
BELOW GROUND: 518 sq. ft, FLOOR 2: 603 sq. ft, FLOOR 3: 928 sq. ft
EXCLUDED AREAS: UTILITY: 41 sq. ft, GARAGE: 419 sq. ft, PORCH: 317 sq. ft
WALLS: 208 sq. ft

Floor Plan Created By V1photos.com, Measurements Deamed Highly Reliable But Not Guaranteed.



Disclaimer: Sizes and Dimensions are Approximate, Actual May Vary.



Suzanne Ekeler
970-590-4841
suzanne@ekelerrealestate.com



5221 Longshaw Court #3, Windsor, CO 80528 — All Levels



TOTAL: 2049 sq. ft
BELOW GROUND: 518 sq. ft, FLOOR 2: 603 sq. ft, FLOOR 3: 928 sq. ft
EXCLUDED AREAS: UTILITY: 41 sq. ft, GARAGE: 419 sq. ft, PORCH: 317 sq. ft
WALLS: 208 sq. ft

Floor Plan Created By V1photos.com, Measurements Deamed Highly Reliable But Not Guaranteed.



Disclaimer: Sizes and Dimensions are Approximate, Actual May Vary.



Suzanne Ekeler
970-590-4841
suzanne@ekelerrealestate.com



Scan code
for more
property
details

