



1204 50th Avenue
Greeley, CO 80634
COMMUNITY: Country Club West



Single Family



4322 SQFT



4 Beds



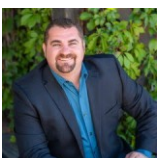
4 Baths



3 Car



0.44 Acre



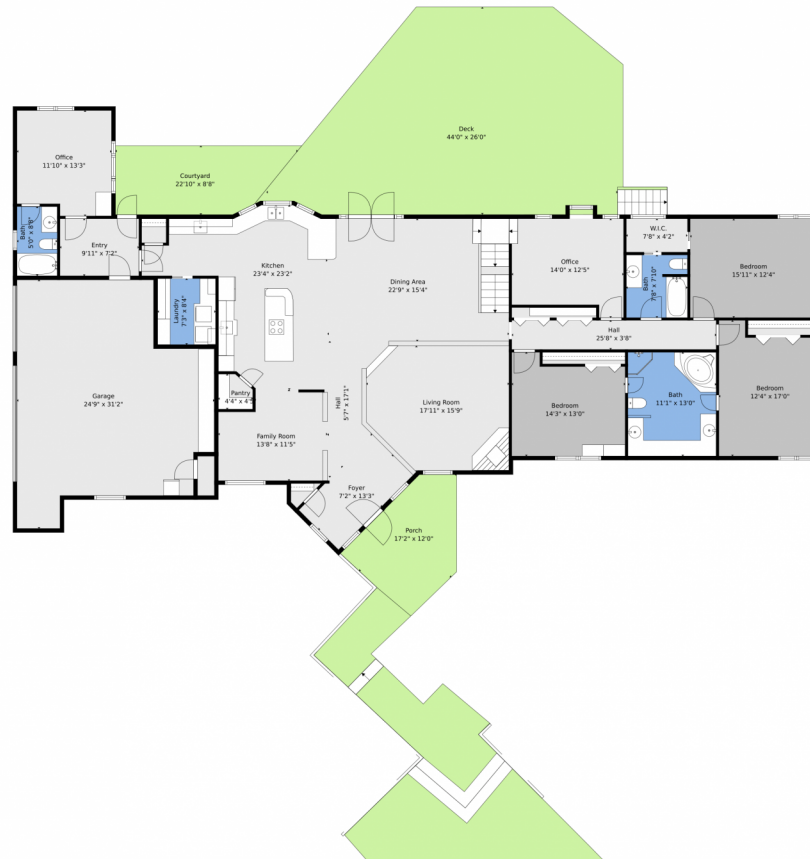
Brad Inhulsen
970-584-4144
brad@yournocorealtor.com



Scan code
for more
property
details



1204 50th Avenue, Greeley, CO 80634 — Main



TOTAL: 4207 sq. ft
BELOW GROUND: 382 sq. ft, FLOOR 2: 2833 sq. ft, FLOOR 3: 992 sq. ft
EXCLUDED AREAS: UTILITY: 52 sq. ft, GARAGE: 612 sq. ft, DECK: 925 sq. ft,
PORCH: 160 sq. ft, BAY WINDOW: 5 sq. ft, PATIO: 325 sq. ft,
OPEN TO BELOW: 719 sq. ft
WALLS: 339 sq. ft

Floor Plan Created By V1photos.com, Measurements Deamed Highly Reliable But Not Guaranteed.



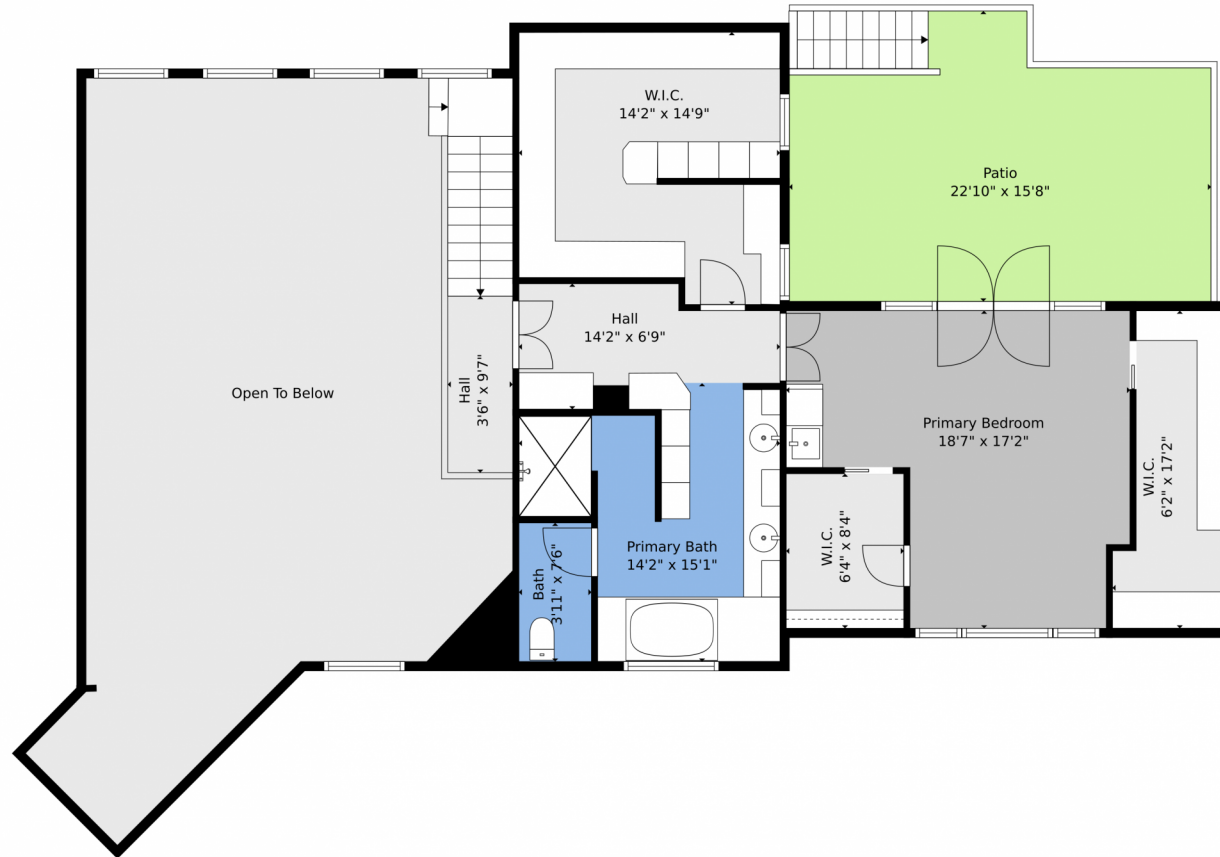
Disclaimer: Sizes and Dimensions are Approximate, Actual May Vary.



Brad Inhulsen
970-584-4144
brad@yournocorealtor.com



1204 50th Avenue, Greeley, CO 80634 – 2nd Level



TOTAL: 4207 sq. ft
BELOW GROUND: 382 sq. ft, FLOOR 2: 2833 sq. ft, FLOOR 3: 992 sq. ft
EXCLUDED AREAS: UTILITY: 52 sq. ft, GARAGE: 612 sq. ft, DECK: 925 sq. ft,
PORCH: 160 sq. ft, BAY WINDOW: 5 sq. ft, PATIO: 325 sq. ft,
OPEN TO BELOW: 719 sq. ft
WALLS: 339 sq. ft

Floor Plan Created By V1photos.com, Measurements Deamed Highly Reliable But Not Guaranteed.



Disclaimer: Sizes and Dimensions are Approximate, Actual May Vary.



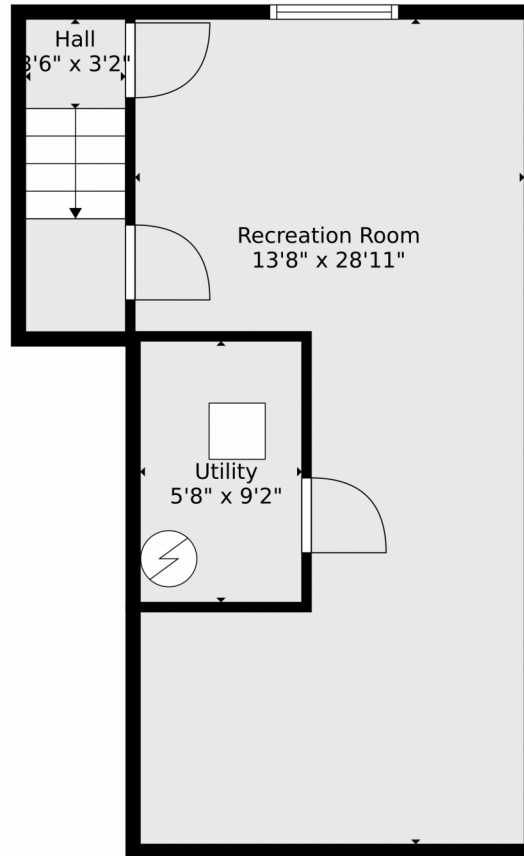
Brad Inhulsen
970-584-4144
brad@yournocorealtor.com



Scan code
for more
property
details



1204 50th Avenue, Greeley, CO 80634 — Lower Level



TOTAL: 4207 sq. ft
BELOW GROUND: 382 sq. ft, FLOOR 2: 2833 sq. ft, FLOOR 3: 992 sq. ft
EXCLUDED AREAS: UTILITY: 52 sq. ft, GARAGE: 612 sq. ft, DECK: 925 sq. ft,
PORCH: 160 sq. ft, BAY WINDOW: 5 sq. ft, PATIO: 325 sq. ft,
OPEN TO BELOW: 719 sq. ft
WALLS: 339 sq. ft

Floor Plan Created By V1photos.com, Measurements Deamed Highly Reliable But Not Guaranteed.



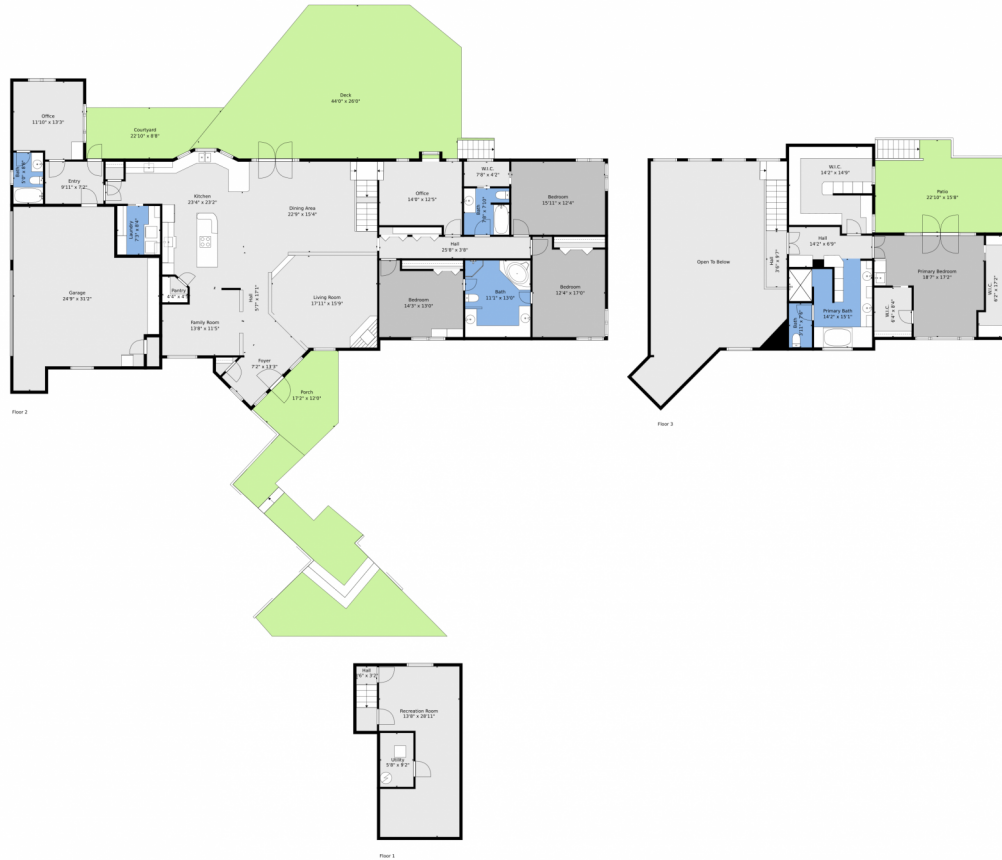
Disclaimer: Sizes and Dimensions are Approximate, Actual May Vary.



Brad Inhulsen
970-584-4144
brad@yournocorealtor.com



1204 50th Avenue, Greeley, CO 80634 — All Levels



TOTAL: 4207 sq. ft
 BELOW GROUND: 382 sq. ft, FLOOR 2: 2833 sq. ft, FLOOR 3: 992 sq. ft
 EXCLUDED AREAS: UTILITY: 52 sq. ft, GARAGE: 612 sq. ft, DECK: 925 sq. ft,
 PORCH: 160 sq. ft, BAY WINDOW: 5 sq. ft, PATIO: 325 sq. ft,
 OPEN TO BELOW: 719 sq. ft
 WALLS: 339 sq. ft

Floor Plan Created By V1photos.com, Measurements Deamed Highly Reliable But Not Guaranteed.

Disclaimer: Sizes and Dimensions are Approximate, Actual May Vary.



Brad Inhulsen
970-584-4144
brad@yournocorealtor.com



Scan code
for more
property
details

