



Single Family



3356 SQFT



3 Beds



3/1 Baths



7 Car



2 Acre

PROPERTY DETAILS

Colorado Living at It's Best



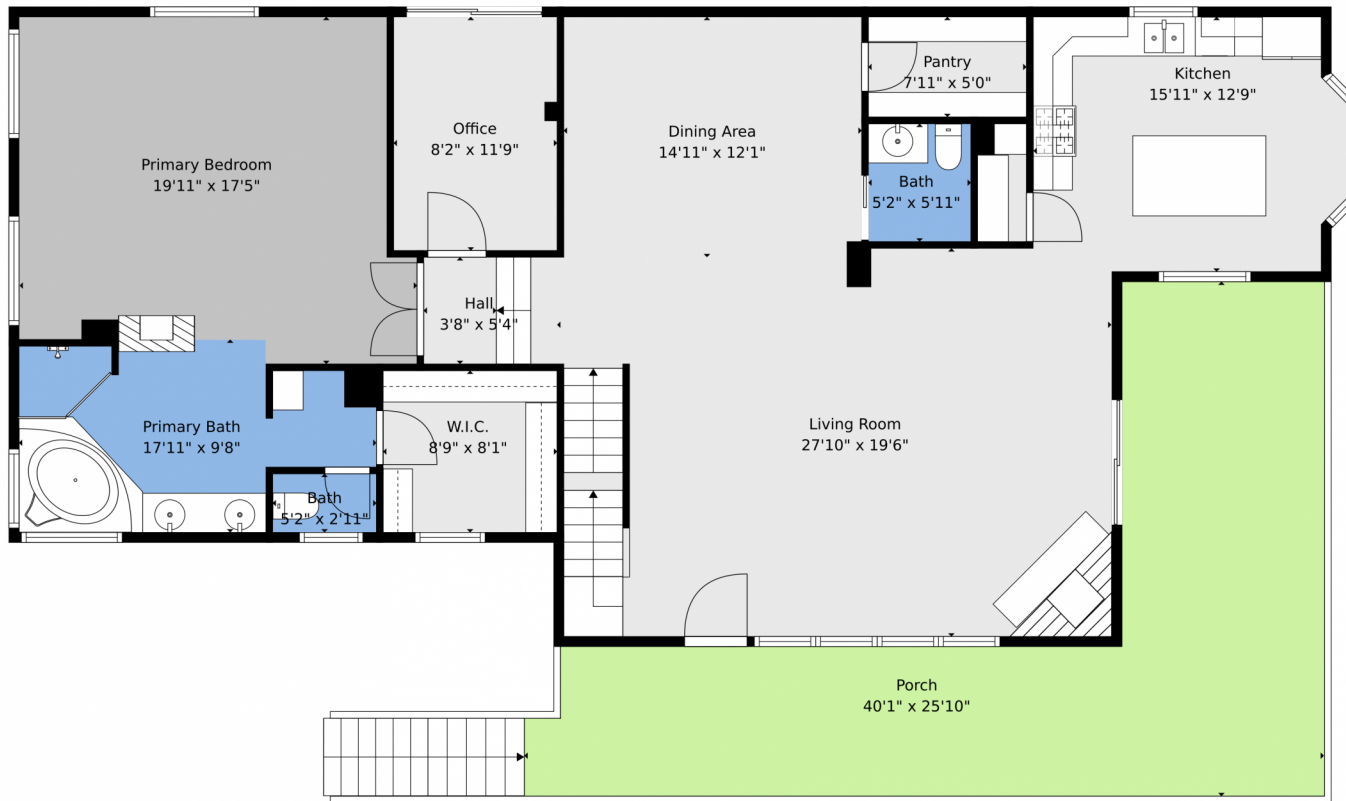
Peg Schroeder
303-885-4404
peg@tuppersteam.com



Scan code
for more
property
details



11768 Black Hawk Drive, Conifer, CO 80433 – Main



TOTAL: 3207 sq. ft
FLOOR 1: 0 sq. ft, FLOOR 2: 0 sq. ft, FLOOR 3: 886 sq. ft, FLOOR 4: 1706 sq. ft, FLOOR 5: 615 sq. ft
EXCLUDED AREAS: GARAGE: 1830 sq. ft, UTILITY: 104 sq. ft, DECK: 669 sq. ft,
PORCH: 519 sq. ft, BALCONY: 44 sq. ft, OPEN TO BELOW: 374 sq. ft
WALLS: 379 sq. ft

Floor Plan Created By V1photos.com, Measurements Deamed Highly Reliable But Not Guaranteed.



Disclaimer: Sizes and Dimensions are Approximate, Actual May Vary.



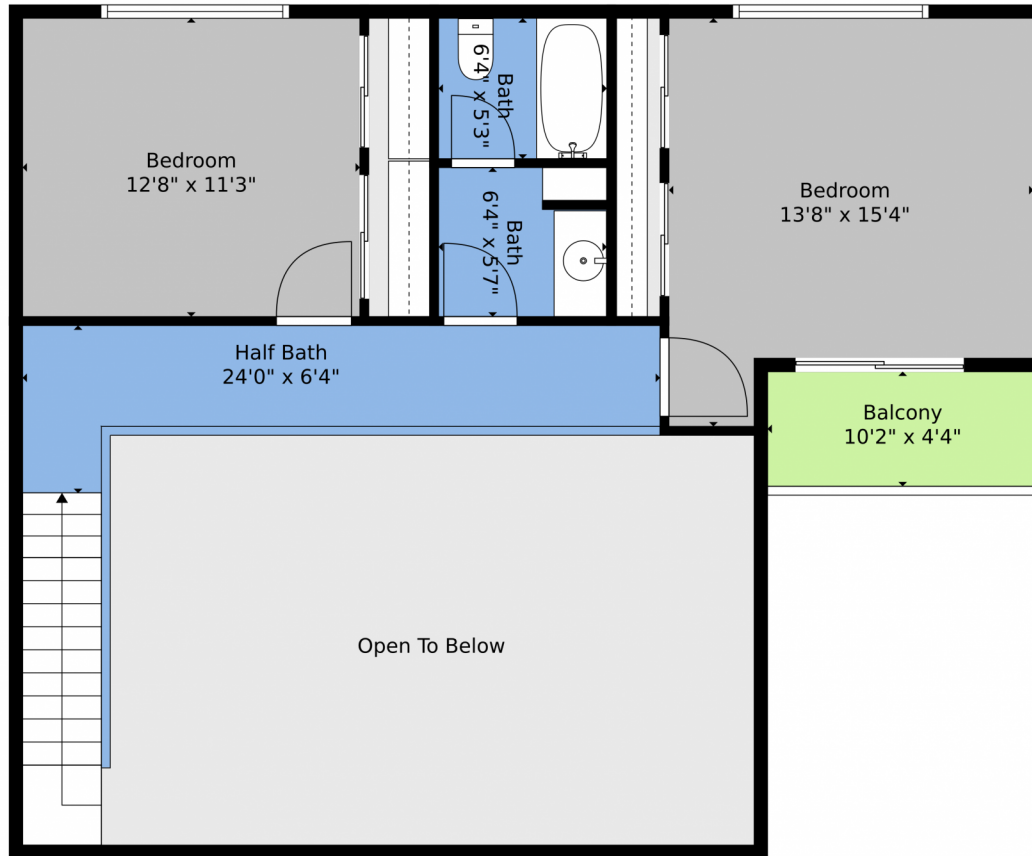
Peg Schroeder
303-885-4404
peg@tuppersteam.com



Scan code
for more
property
details



11768 Black Hawk Drive, Conifer, CO 80433 – 2nd Level



TOTAL: 3207 sq. ft
FLOOR 1: 0 sq. ft, FLOOR 2: 0 sq. ft, FLOOR 3: 886 sq. ft, FLOOR 4: 1706 sq. ft, FLOOR 5: 615 sq. ft
EXCLUDED AREAS: GARAGE: 1830 sq. ft, UTILITY: 104 sq. ft, DECK: 669 sq. ft,
PORCH: 519 sq. ft, BALCONY: 44 sq. ft, OPEN TO BELOW: 374 sq. ft
WALLS: 379 sq. ft

Floor Plan Created By V1photos.com, Measurements Deamed Highly Reliable But Not Guaranteed.



Disclaimer: Sizes and Dimensions are Approximate, Actual May Vary.



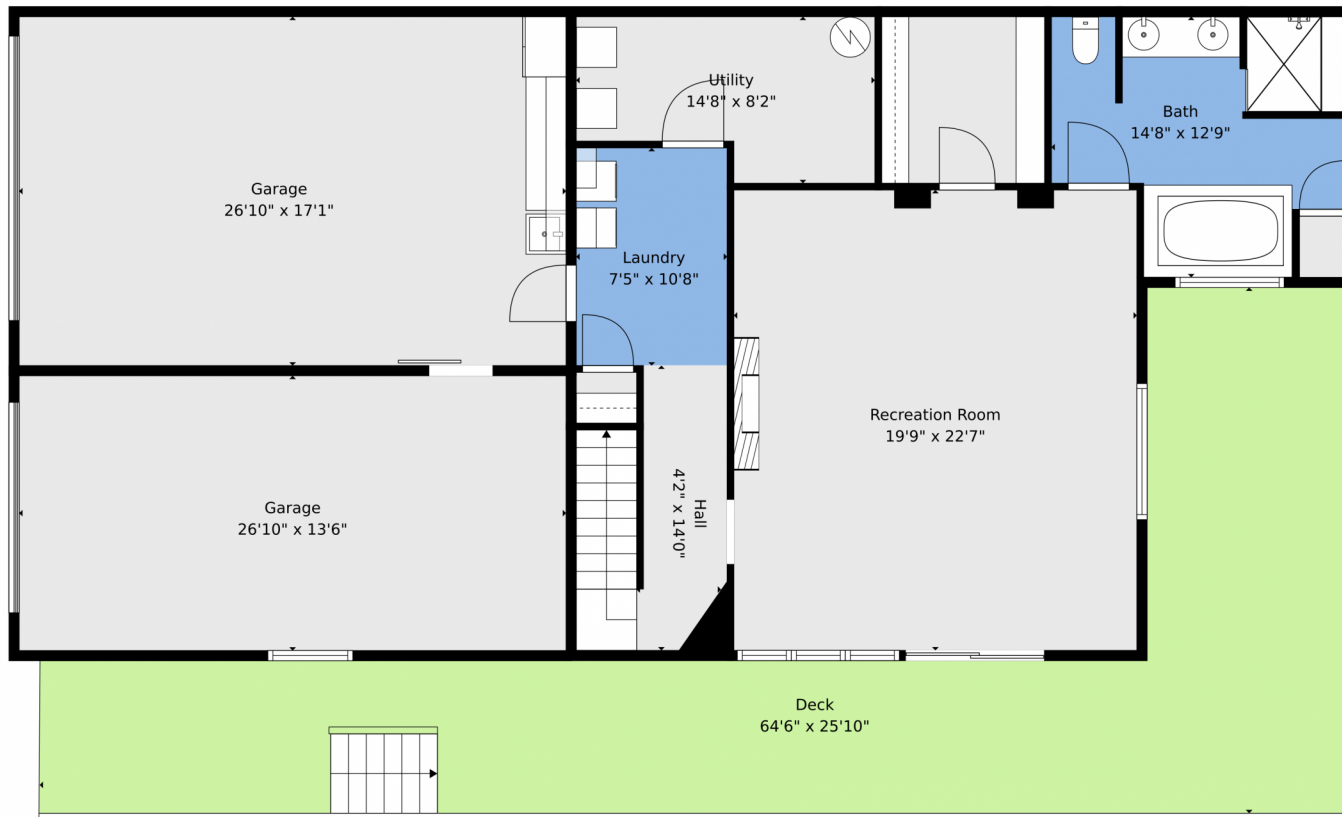
Peg Schroeder
303-885-4404
peg@tuppersteam.com



Scan code
for more
property
details



11768 Black Hawk Drive, Conifer, CO 80433 — Lower Level



TOTAL: 3207 sq. ft
FLOOR 1: 0 sq. ft, FLOOR 2: 0 sq. ft, FLOOR 3: 886 sq. ft, FLOOR 4: 1706 sq. ft, FLOOR 5: 615 sq. ft
EXCLUDED AREAS: GARAGE: 1830 sq. ft, UTILITY: 104 sq. ft, DECK: 669 sq. ft,
PORCH: 519 sq. ft, BALCONY: 44 sq. ft, OPEN TO BELOW: 374 sq. ft
WALLS: 379 sq. ft

Floor Plan Created By V1photos.com, Measurements Deamed Highly Reliable But Not Guaranteed.



Disclaimer: Sizes and Dimensions are Approximate, Actual May Vary.



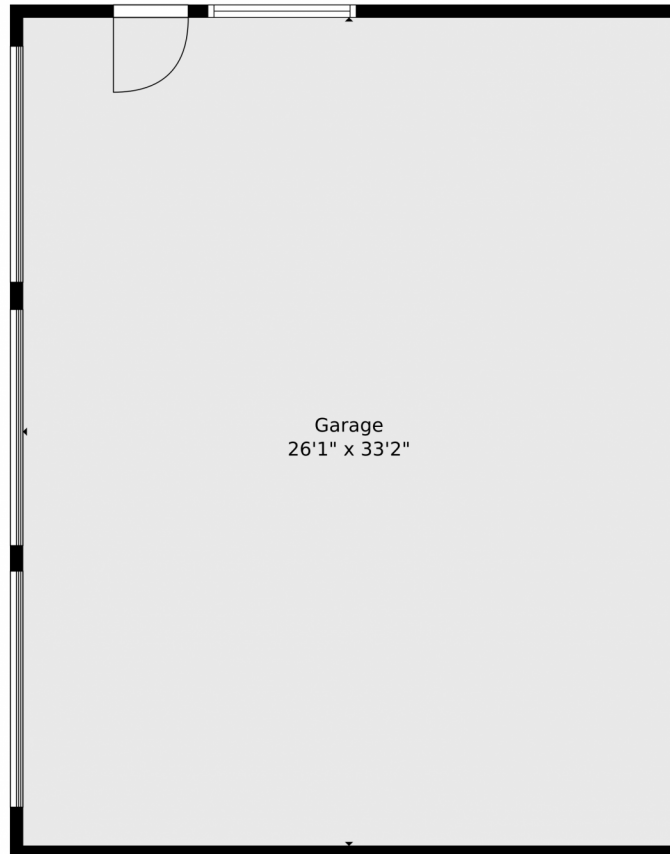
Peg Schroeder
303-885-4404
peg@tuppersteam.com



Scan code
for more
property
details



11768 Black Hawk Drive, Conifer, CO 80433 — Detached Garage



TOTAL: 3207 sq. ft
FLOOR 1: 0 sq. ft, FLOOR 2: 0 sq. ft, FLOOR 3: 886 sq. ft, FLOOR 4: 1706 sq. ft, FLOOR 5: 615 sq. ft
EXCLUDED AREAS: GARAGE: 1830 sq. ft, UTILITY: 104 sq. ft, DECK: 669 sq. ft,
PORCH: 519 sq. ft, BALCONY: 44 sq. ft, OPEN TO BELOW: 374 sq. ft
WALLS: 379 sq. ft

Floor Plan Created By V1photos.com, Measurements Deamed Highly Reliable But Not Guaranteed.



Disclaimer: Sizes and Dimensions are Approximate, Actual May Vary.



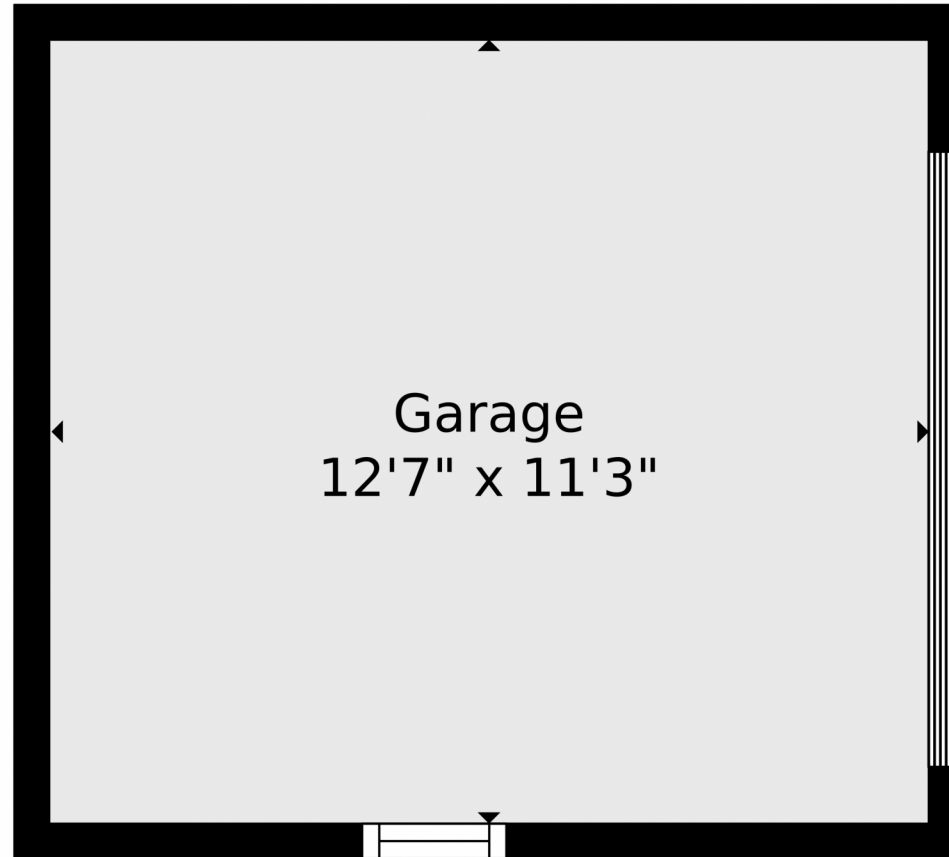
Peg Schroeder
303-885-4404
peg@tuppersteam.com



Scan code
for more
property
details



11768 Black Hawk Drive, Conifer, CO 80433 — Detached Garage



TOTAL: 3207 sq. ft
FLOOR 1: 0 sq. ft, FLOOR 2: 0 sq. ft, FLOOR 3: 886 sq. ft, FLOOR 4: 1706 sq. ft, FLOOR 5: 615 sq. ft
EXCLUDED AREAS: GARAGE: 1830 sq. ft, UTILITY: 104 sq. ft, DECK: 669 sq. ft,
PORCH: 519 sq. ft, BALCONY: 44 sq. ft, OPEN TO BELOW: 374 sq. ft
WALLS: 379 sq. ft

Floor Plan Created By V1photos.com, Measurements Deamed Highly Reliable But Not Guaranteed.



Disclaimer: Sizes and Dimensions are Approximate, Actual May Vary.



Peg Schroeder
303-885-4404
peg@tuppersteam.com



11768 Black Hawk Drive, Conifer, CO 80433 — All Levels



TOTAL: 3207 sq. ft
 FLOOR 1: 0 sq. ft, FLOOR 2: 0 sq. ft, FLOOR 3: 886 sq. ft, FLOOR 4: 1706 sq. ft, FLOOR 5: 615 sq. ft
 EXCLUDED AREAS: GARAGE: 1830 sq. ft, UTILITY: 104 sq. ft, DECK: 669 sq. ft,
 PORCH: 519 sq. ft, BALCONY: 44 sq. ft, OPEN TO BELOW: 374 sq. ft
 WALLS: 379 sq. ft

Floor Plan Created By V1photos.com, Measurements Deamed Highly Reliable But Not Guaranteed.



Disclaimer: Sizes and Dimensions are Approximate, Actual May Vary.



Peg Schroeder
 303-885-4404
 peg@tuppersteam.com



Scan code
 for more
 property
 details

