




 Single Family  3118 SQFT

PROPERTY DETAILS

This home is nestled in a serene wooded area along a creek, offering a private oasis. Located at the back of Barney Gulch off Conifer Mountain Road, it features a vaulted living room with skylights and a wall of windows for stunning views. The main level is perfect for entertaining, with a wraparound deck and a loft above the garage that includes radiant heat, a wet bar, and a full bath. A spring-fed water feature serves as a canine fountain. The heated three-car garage has ample storage and a workbench. Just minutes from Conifer and Hwy 285, the location is ideal for outdoor activities like fishing, hiking, and biking. Enjoy the tranquility and beauty of home!



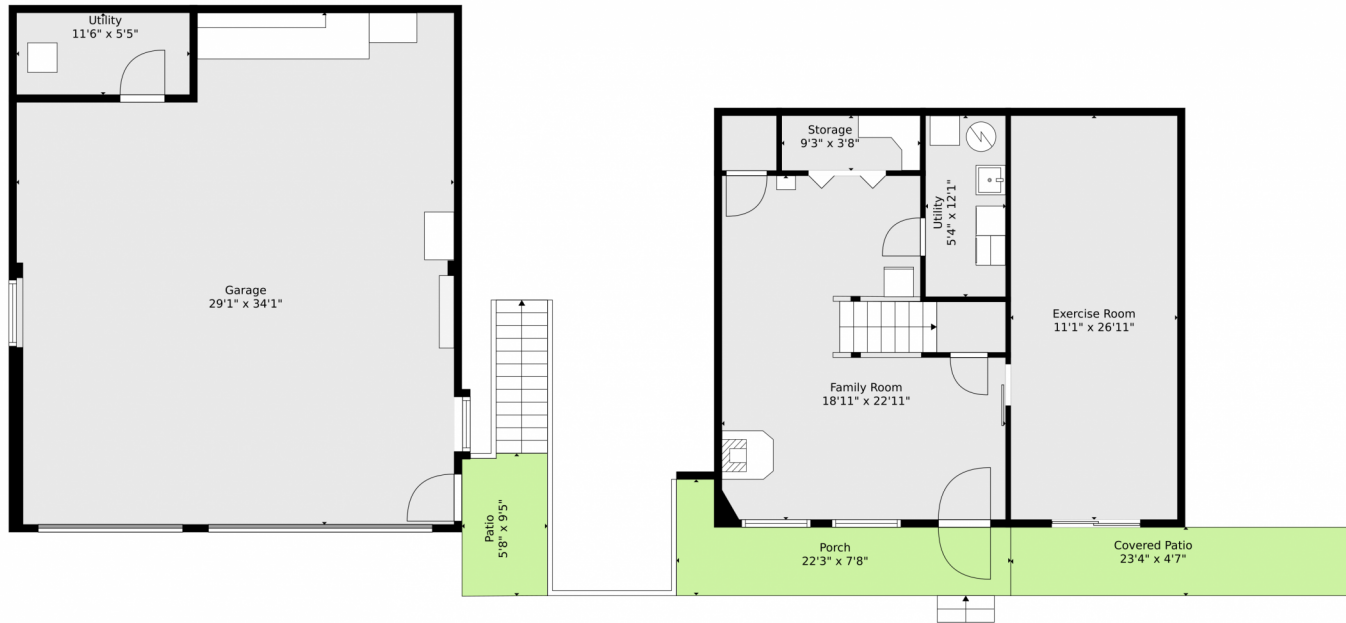
**George Lenell**
303-549-5000
george@coloradohomepro.com



Scan code
for more
property
details



11182 S Barney Gulch Road, Conifer, CO 80433 – Lower Level



TOTAL: 3133 sq. ft
BELOW GROUND: 702 sq. ft, FLOOR 2: 1861 sq. ft, FLOOR 3: 570 sq. ft
EXCLUDED AREAS: GARAGE: 922 sq. ft, UTILITY: 129 sq. ft, STORAGE: 35 sq. ft,
UNDEFINED: 13 sq. ft, PATIO: 53 sq. ft, COVERED PATIO: 106 sq. ft,
PORCH: 110 sq. ft, BAY WINDOW: 3 sq. ft, DECK: 793 sq. ft,
FIREPLACE: 16 sq. ft, OPEN TO BELOW: 266 sq. ft
WALLS: 315 sq. ft

Floor Plan Created By V1photos.com, Measurements Deamed Highly Reliable But Not Guaranteed.



Disclaimer: Sizes and Dimensions are Approximate, Actual May Vary.

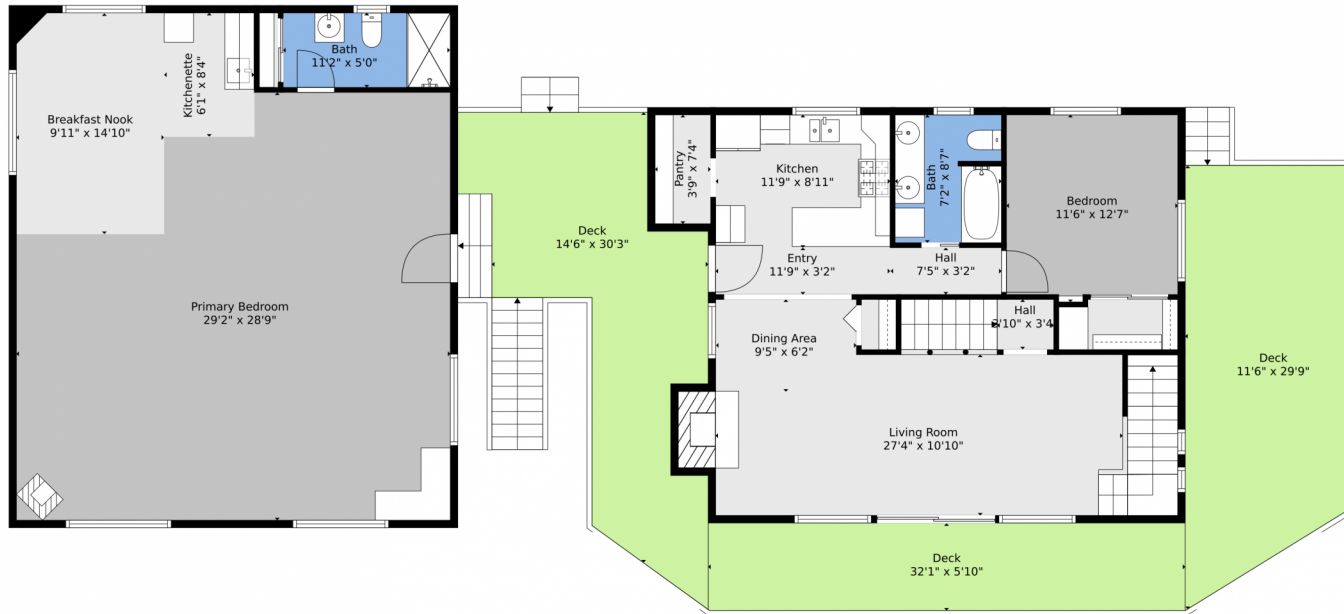


George Lenell
303-549-5000
george@coloradohomepro.com



Scan code
for more
property
details





TOTAL: 3133 sq. ft
BELOW GROUND: 702 sq. ft, FLOOR 2: 1861 sq. ft, FLOOR 3: 570 sq. ft
EXCLUDED AREAS: GARAGE: 922 sq. ft, UTILITY: 129 sq. ft, STORAGE: 35 sq. ft,
UNDEFINED: 13 sq. ft, PATIO: 53 sq. ft, COVERED PATIO: 106 sq. ft,
PORCH: 110 sq. ft, BAY WINDOW: 3 sq. ft, DECK: 793 sq. ft,
FIREPLACE: 16 sq. ft, OPEN TO BELOW: 266 sq. ft
WALLS: 315 sq. ft

Floor Plan Created By V1photos.com, Measurements Deamed Highly Reliable But Not Guaranteed.



Disclaimer: Sizes and Dimensions are Approximate, Actual May Vary.



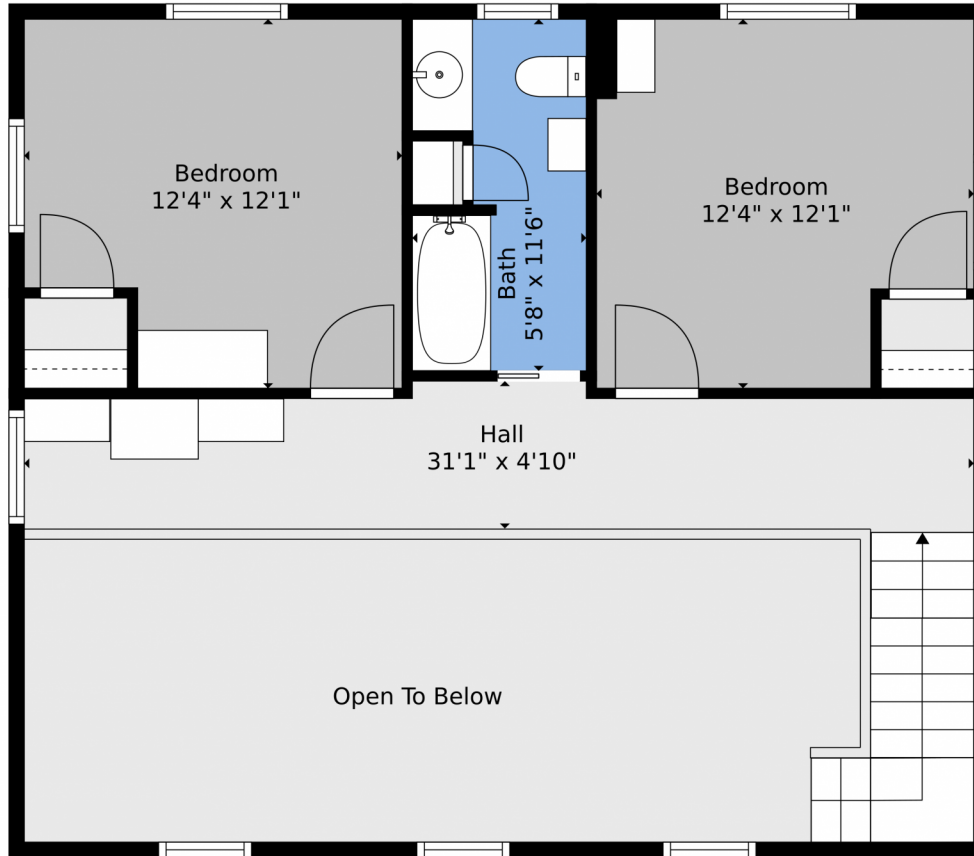
George Lenell
303-549-5000
george@coloradohomepro.com



Scan code
for more
property
details



11182 S Barney Gulch Road, Conifer, CO 80433 – 2nd Level



TOTAL: 3133 sq. ft
BELOW GROUND: 702 sq. ft, FLOOR 2: 1861 sq. ft, FLOOR 3: 570 sq. ft
EXCLUDED AREAS: GARAGE: 922 sq. ft, UTILITY: 129 sq. ft, STORAGE: 35 sq. ft,
UNDEFINED: 13 sq. ft, PATIO: 53 sq. ft, COVERED PATIO: 106 sq. ft,
PORCH: 110 sq. ft, BAY WINDOW: 3 sq. ft, DECK: 793 sq. ft,
FIREPLACE: 16 sq. ft, OPEN TO BELOW: 266 sq. ft
WALLS: 315 sq. ft

Floor Plan Created By V1photos.com, Measurements Deamed Highly Reliable But Not Guaranteed.



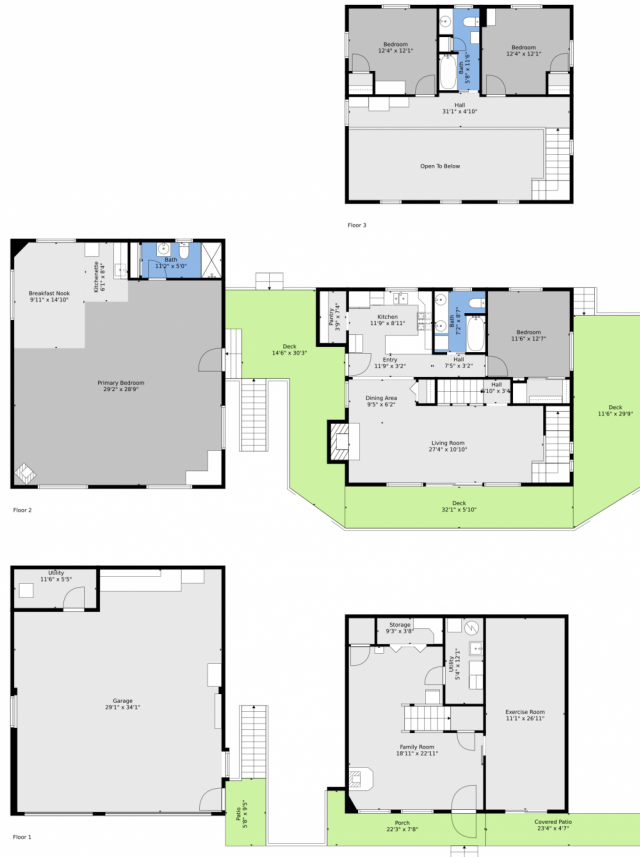
Disclaimer: Sizes and Dimensions are Approximate, Actual May Vary.



George Lenell
303-549-5000
george@coloradohomepro.com



11182 S Barney Gulch Road, Conifer, CO 80433 – All Levels




TOTAL: 3133 sq. ft
 BELOW GROUND: 702 sq. ft, FLOOR 2: 1861 sq. ft, FLOOR 3: 570 sq. ft
 EXCLUDED AREAS: GARAGE: 922 sq. ft, UTILITY: 129 sq. ft, STORAGE: 35 sq. ft,
 UNDEFINED: 13 sq. ft, PATIO: 53 sq. ft, COVERED PATIO: 106 sq. ft,
 PORCH: 110 sq. ft, BAY WINDOW: 3 sq. ft, DECK: 793 sq. ft,
 FIREPLACE: 16 sq. ft, OPEN TO BELOW: 266 sq. ft
 WALLS: 315 sq. ft

Floor Plan Created By V1photos.com, Measurements Deamed Highly Reliable But Not Guaranteed.



Disclaimer: Sizes and Dimensions are Approximate, Actual May Vary.



George Lenell
 303-549-5000
 george@coloradohomepro.com

Scan code for more property details