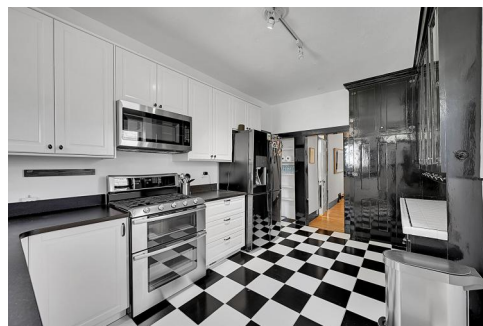
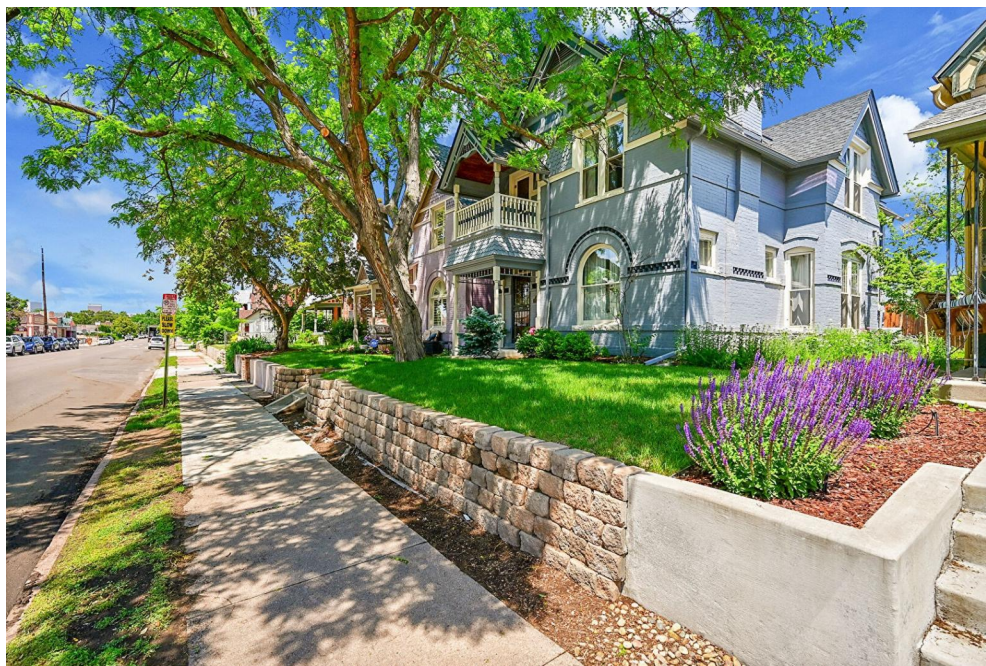


## Quintessential Victorian home in Wash Park



Single Family



2143 SQFT



3 Beds



1/1 Baths



2 Car



0.11 Acre

## PROPERTY DETAILS

This stunning Victorian home is located on a serene tree-lined street near Washington Park. It features a spacious layout with high ceilings and abundant natural light. Upstairs, there are 3 bedrooms, a full bathroom, and laundry facilities. Adjacent to the primary suite is a charming room perfect for a reading nook or nursery, with access to a private balcony. The main level includes an open layout and a versatile bonus room that can serve as an office or 4th bedroom. The private backyard is great for relaxation and entertaining, complete with raised garden beds. An oversized 2-car garage offers ample storage. Solar panels (installed 2017) and a new roof (2019) add value. This vibrant yet quiet neighborhood is close to parks, restaurants, and shopping, with easy access to Cherry Creek, Downtown, and the mountains. This home truly embodies living the Washington Park lifestyle!



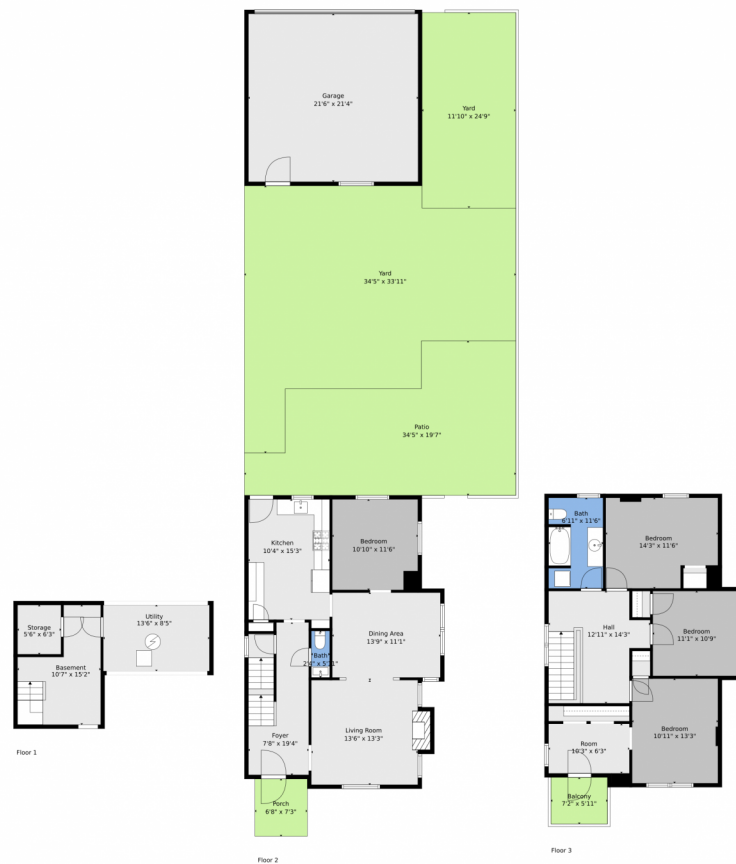
**Jennifer Steinert**  
303-246-2226  
jen@madisonprops.com



Scan code  
for more  
property  
details



# 444 South Pearl Street, Denver, CO 80209 — All Levels



**TOTAL: 1601 sq. ft**  
BELOW GROUND: 0 sq. ft, FLOOR 2: 802 sq. ft, FLOOR 3: 799 sq. ft  
EXCLUDED AREAS: BASEMENT: 129 sq. ft, UTILITY: 113 sq. ft, STORAGE: 34 sq. ft,  
GARAGE: 458 sq. ft, PATIO: 496 sq. ft, PORCH: 48 sq. ft,  
FIREPLACE: 9 sq. ft, BALCONY: 42 sq. ft  
WALLS: 203 sq. ft

Floor Plan Created By V1photos.com, Measurements Deamed Highly Reliable But Not Guaranteed.



Disclaimer: Sizes and Dimensions are Approximate, Actual May Vary.



Jennifer Steinert  
303-246-2226  
jen@madisonprops.com



Scan code  
for more  
property  
details

