

Townhouse



2727 SQFT



4 Beds



3/1 Baths



2 Car



0.12 Acre

PROPERTY DETAILS

Stunning Townhome with Mountain Views



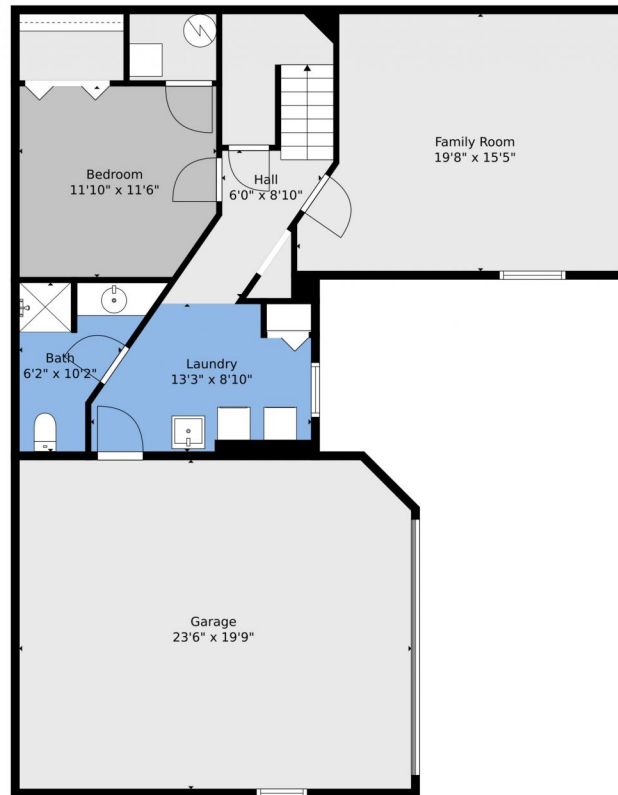
Matt Bachus
 720-644-9363
 matt@tuppersteam.com



Scan code
 for more
 property
 details



29857 Park Village Drive, Evergreen, CO 80439 — Lower Level



Floor Plan Created By V1photos.com. Measurements Deamed Highly Reliable But Not Guaranteed.



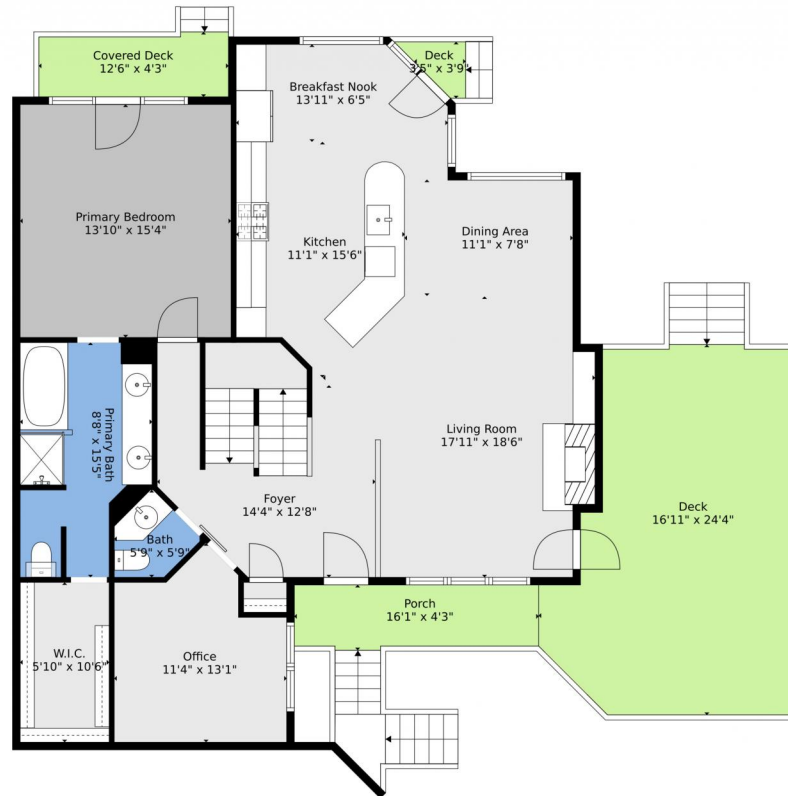
Disclaimer: Sizes and Dimensions are Approximate, Actual May Vary.



Matt Bachus
720-644-9363
matt@tuppersteam.com



29857 Park Village Drive, Evergreen, CO 80439 — Main



Floor Plan Created By V1photos.com. Measurements Deamed Highly Reliable But Not Guaranteed.



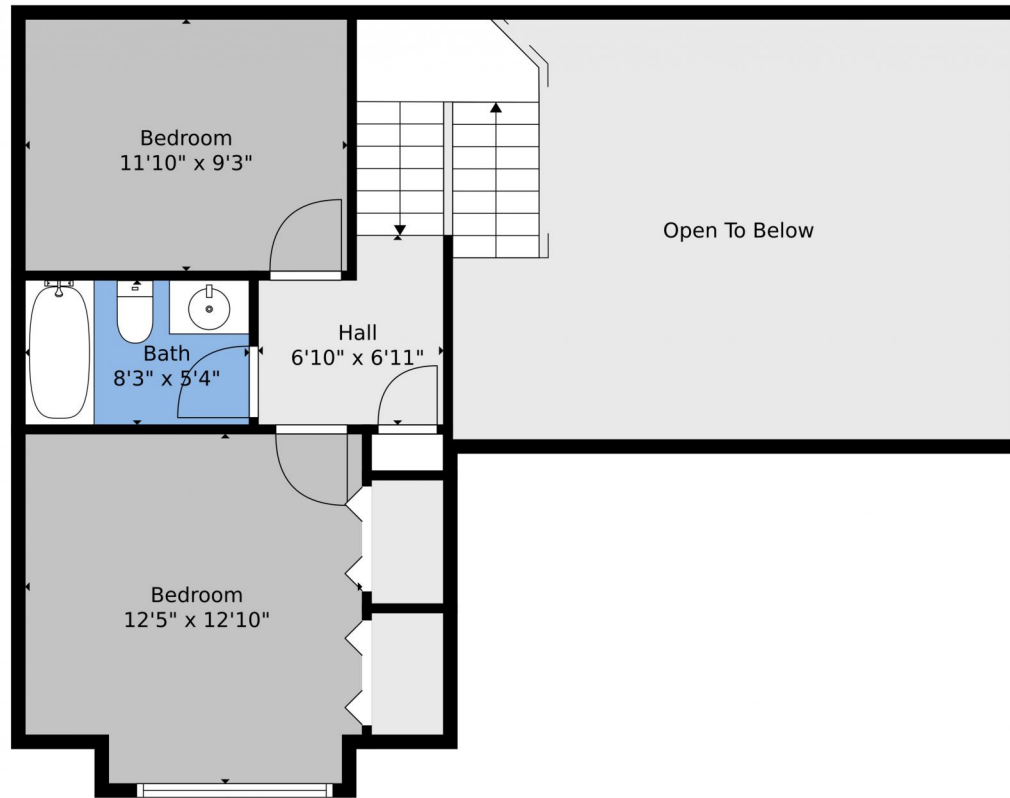
Disclaimer: Sizes and Dimensions are Approximate, Actual May Vary.



Matt Bachus
720-644-9363
matt@tuppersteam.com



29857 Park Village Drive, Evergreen, CO 80439 — 2nd Level



Floor Plan Created By V1photos.com. Measurements Deamed Highly Reliable But Not Guaranteed.



Disclaimer: Sizes and Dimensions are Approximate, Actual May Vary.



Matt Bachus
720-644-9363
matt@tuppersteam.com



29857 Park Village Drive, Evergreen, CO 80439 — All Levels



Floor Plan Created By V1photos.com. Measurements Deamed Highly Reliable But Not Guaranteed.



Disclaimer: Sizes and Dimensions are Approximate, Actual May Vary.



Matt Bachus
720-644-9363
matt@tuppersteam.com



Scan code
for more
property
details