



Single Family



1470 SQFT



3 Beds



2 Baths



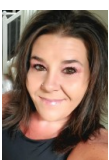
1 Car



0.06 Acre

PROPERTY DETAILS

Fantastic move-in-ready 2-story home on a desirable corner lot. The main floor offers a spacious living room and an updated kitchen featuring white cabinets, brand new slab granite countertops, new sink and faucet, stainless steel appliances, and a walk-in pantry. The large dining area opens to a private back patio and low-maintenance yard—ideal for entertaining. Upstairs, enjoy a generous primary bedroom complete with an updated ensuite bath and walk-in closet. Two additional bedrooms, a fully remodeled second bathroom, and convenient second-floor laundry complete the upper level. Attached 1-car garage provides additional convenience and storage. Located near foothills, trails, and lakes with quick access to Hwy 285, C-470, shopping, dining, and more. Quick possession available.



RaNae Rodriguez

303-875-4091

raae@mscadvisors.com

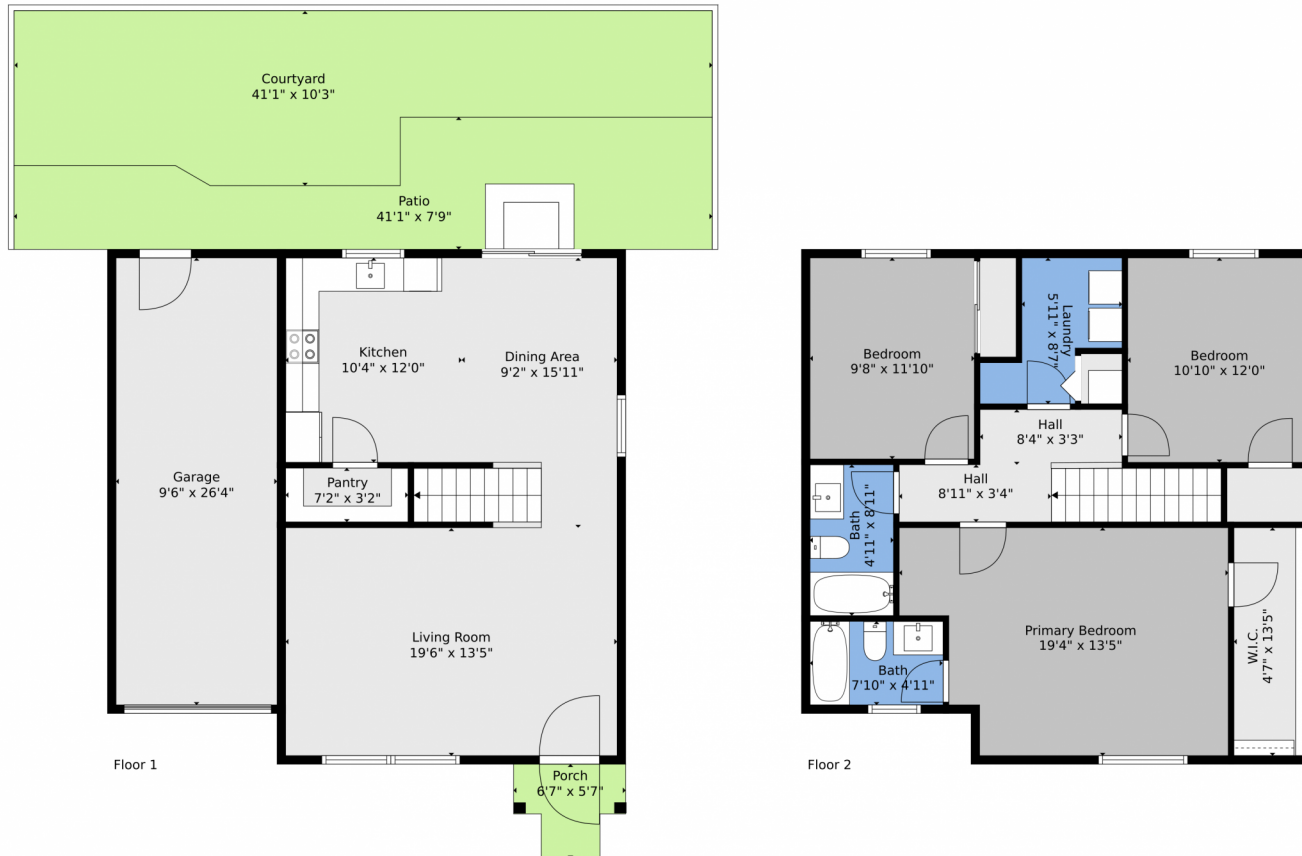
<http://www.mscadvisors.com>



Scan code
for more
property
details



11803 West Tufts Place, Morrison, CO 80465 – All Levels

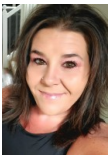


TOTAL: 1406 sq. ft
FLOOR 1: 572 sq. ft, FLOOR 2: 834 sq. ft
EXCLUDED AREAS: PORCH: 28 sq. ft, PATIO: 241 sq. ft, GARAGE: 249 sq. ft,
WALLS: 133 sq. ft

Floor Plan Created By V1photos.com, Measurements Deamed Highly Reliable But Not Guaranteed.



Disclaimer: Sizes and Dimensions are Approximate, Actual May Vary.



RaNae Rodriguez
303-875-4091
ranae@mscadvisors.com
<http://www.mscadvisors.com>



Scan code
for more
property
details

