

1023 Chippewa Road
Jefferson, CO 80456



Single Family



1954 SQFT

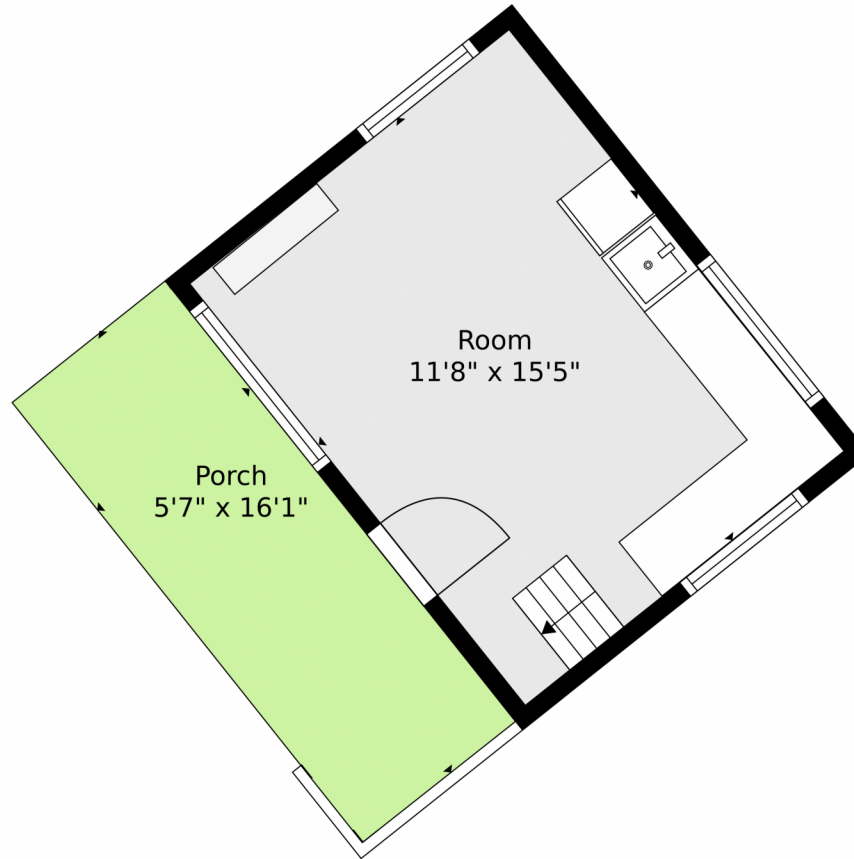


Victoria Merchant
303-328-8800
vmerchant@kw.com



Scan code
for more
property
details





TOTAL: 2177 sq. ft
FLOOR 1: 179 sq. ft, FLOOR 2: 159 sq. ft, FLOOR 3: 0 sq. ft, FLOOR 4: 1839 sq. ft
EXCLUDED AREAS: PORCH: 166 sq. ft, LOW CEILING: 20 sq. ft, SHED: 63 sq. ft,
GARAGE: 666 sq. ft, UNDEFINED: 22 sq. ft, COVERED PATIO: 229 sq. ft,
PATIO: 229 sq. ft
WALLS: 215 sq. ft

Floor Plan Created By V1photos.com, Measurements Deamed Highly Reliable But Not Guaranteed.

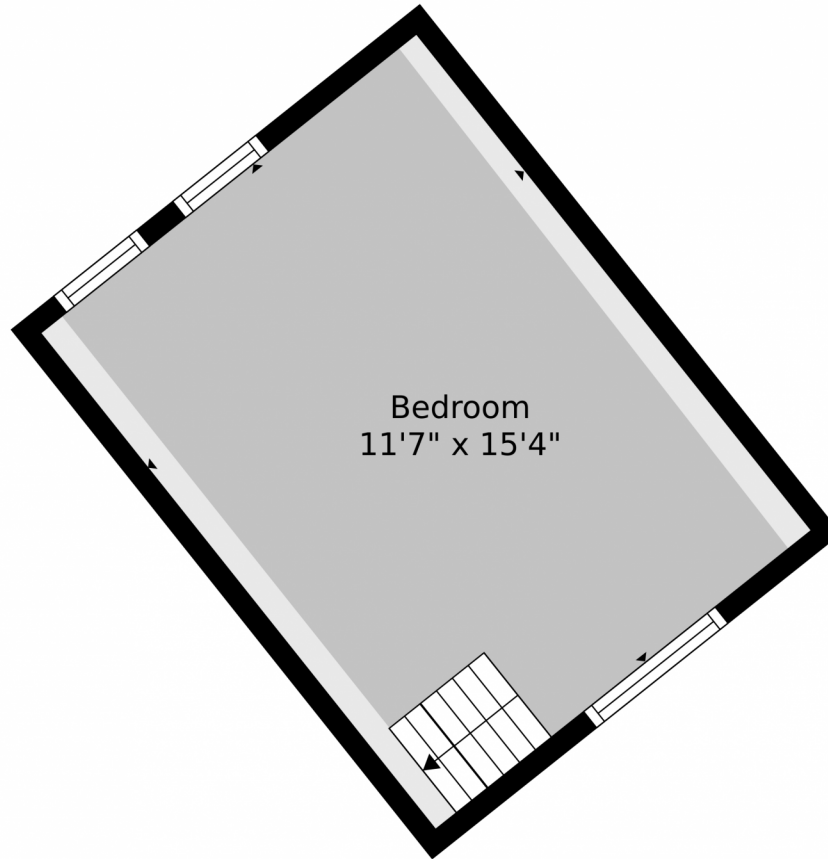


Disclaimer: Sizes and Dimensions are Approximate, Actual May Vary.



Victoria Merchant
303-328-8800
vmerchant@kw.com





TOTAL: 2177 sq. ft
FLOOR 1: 179 sq. ft, FLOOR 2: 159 sq. ft, FLOOR 3: 0 sq. ft, FLOOR 4: 1839 sq. ft
EXCLUDED AREAS: PORCH: 166 sq. ft, LOW CEILING: 20 sq. ft, SHED: 63 sq. ft,
GARAGE: 666 sq. ft, UNDEFINED: 22 sq. ft, COVERED PATIO: 229 sq. ft,
PATIO: 229 sq. ft
WALLS: 215 sq. ft

Floor Plan Created By V1photos.com, Measurements Deamed Highly Reliable But Not Guaranteed.

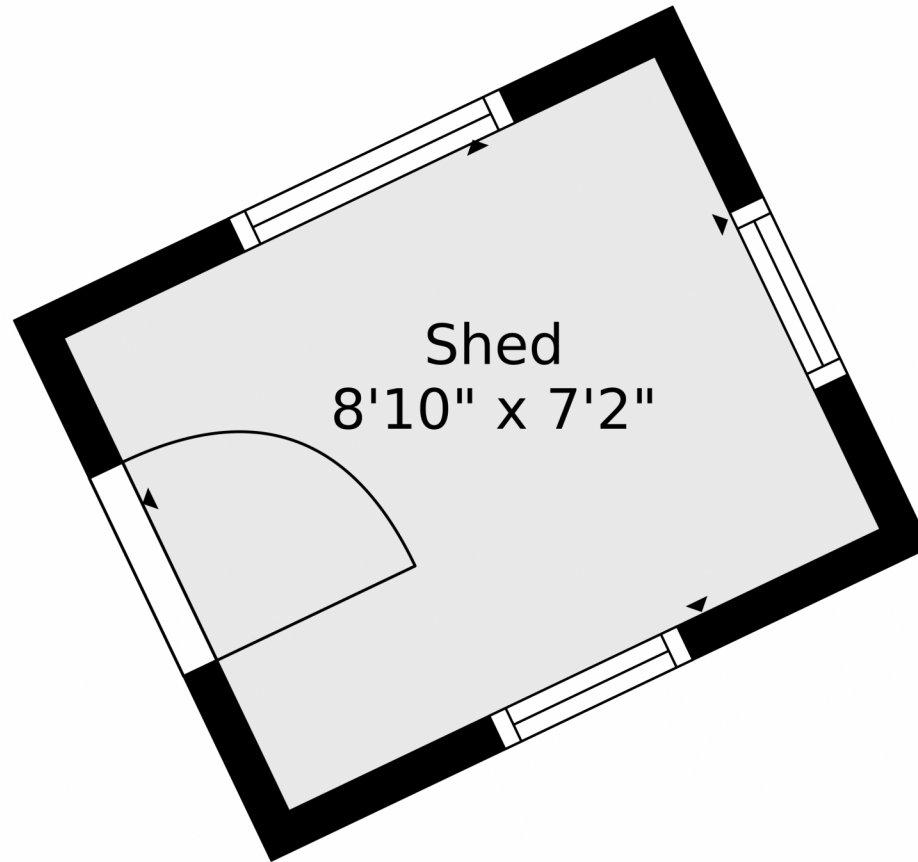


Disclaimer: Sizes and Dimensions are Approximate, Actual May Vary.



Victoria Merchant
303-328-8800
vmerchant@kw.com





TOTAL: 2177 sq. ft
FLOOR 1: 179 sq. ft, FLOOR 2: 159 sq. ft, FLOOR 3: 0 sq. ft, FLOOR 4: 1839 sq. ft
EXCLUDED AREAS: PORCH: 166 sq. ft, LOW CEILING: 20 sq. ft, SHED: 63 sq. ft,
GARAGE: 666 sq. ft, UNDEFINED: 22 sq. ft, COVERED PATIO: 229 sq. ft,
PATIO: 229 sq. ft
WALLS: 215 sq. ft

Floor Plan Created By V1photos.com, Measurements Deamed Highly Reliable But Not Guaranteed.



Disclaimer: Sizes and Dimensions are Approximate, Actual May Vary.



Victoria Merchant
303-328-8800
vmerchant@kw.com



1023 Chippewa Road, Jefferson, CO 80456 – Main



TOTAL: 2177 sq. ft
FLOOR 1: 179 sq. ft, FLOOR 2: 159 sq. ft, FLOOR 3: 0 sq. ft, FLOOR 4: 1839 sq. ft
EXCLUDED AREAS: PORCH: 166 sq. ft, LOW CEILING: 20 sq. ft, SHED: 63 sq. ft,
GARAGE: 666 sq. ft, UNDEFINED: 22 sq. ft, COVERED PATIO: 229 sq. ft,
PATIO: 229 sq. ft
WALLS: 215 sq. ft

Floor Plan Created By V1photos.com, Measurements Deamed Highly Reliable But Not Guaranteed.



Disclaimer: Sizes and Dimensions are Approximate, Actual May Vary.



Victoria Merchant
303-328-8800
vmerchant@kw.com



Scan code
for more
property
details



1023 Chippewa Road, Jefferson, CO 80456 – All Levels



TOTAL: 2177 sq. ft
FLOOR 1: 179 sq. ft, FLOOR 2: 159 sq. ft, FLOOR 3: 0 sq. ft, FLOOR 4: 1839 sq. ft
EXCLUDED AREAS: PORCH: 166 sq. ft, LOW CEILING: 20 sq. ft, SHED: 63 sq. ft,
GARAGE: 666 sq. ft, UNDEFINED: 22 sq. ft, COVERED PATIO: 229 sq. ft,
PATIO: 229 sq. ft
WALLS: 215 sq. ft

Floor Plan Created By V1photos.com, Measurements Deamed Highly Reliable But Not Guaranteed.



Disclaimer: Sizes and Dimensions are Approximate, Actual May Vary.



Victoria Merchant
303-328-8800
vmerchant@kw.com

