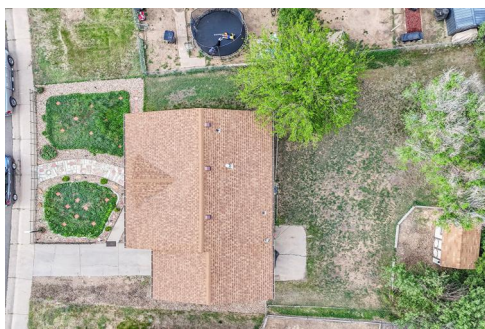
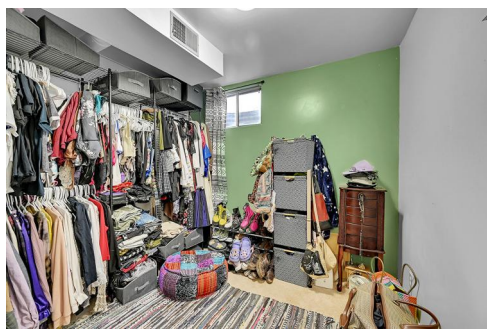




3208 West 5th Street Road
Greeley, CO 80634



Single Family



1728 SQFT



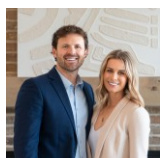
4 Beds



2 Baths



0.2 Acre



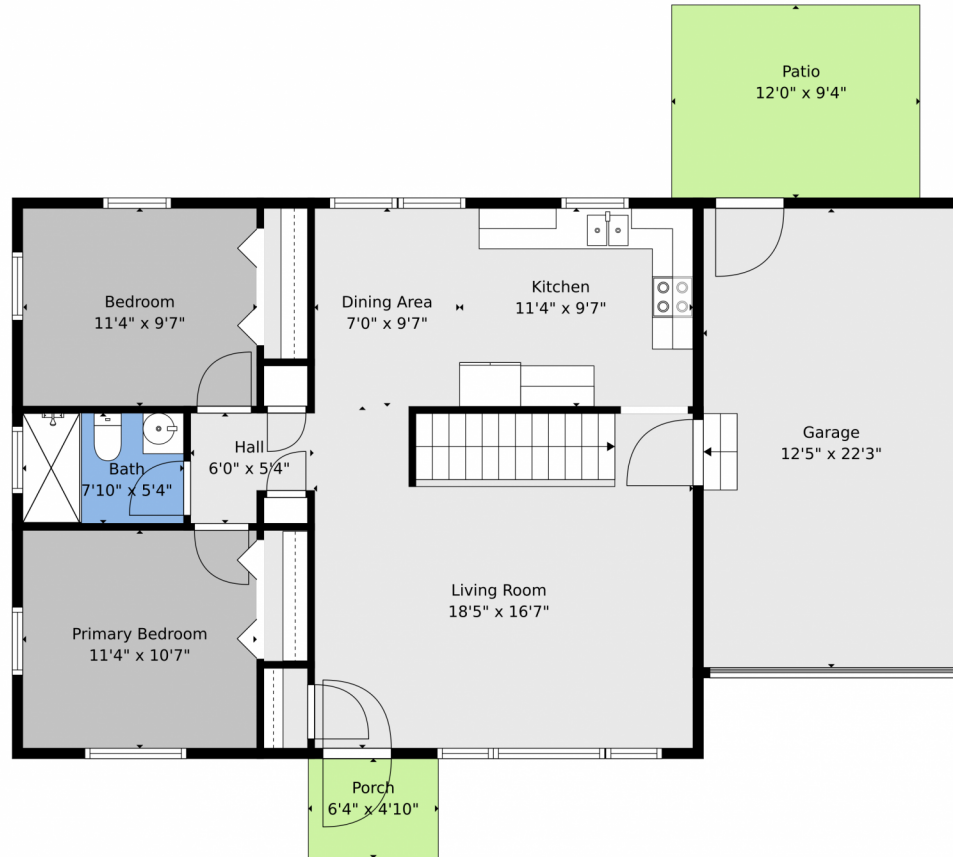
Scott & Carli Nitzel
970-590-5450
scott@nexthomefoundations.com



Scan code
for more
property
details



3208 West 5th Street Road, Greeley, CO 80634 — Main

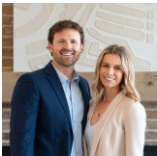


TOTAL: 1700 sq. ft
FLOOR 1: 850 sq. ft, FLOOR 2: 850 sq. ft
EXCLUDED AREAS: GARAGE: 276 sq. ft, PORCH: 30 sq. ft, PATIO: 112 sq. ft,
WALLS: 142 sq. ft

Floor Plan Created By V1photos.com, Measurements Deamed Highly Reliable But Not Guaranteed.



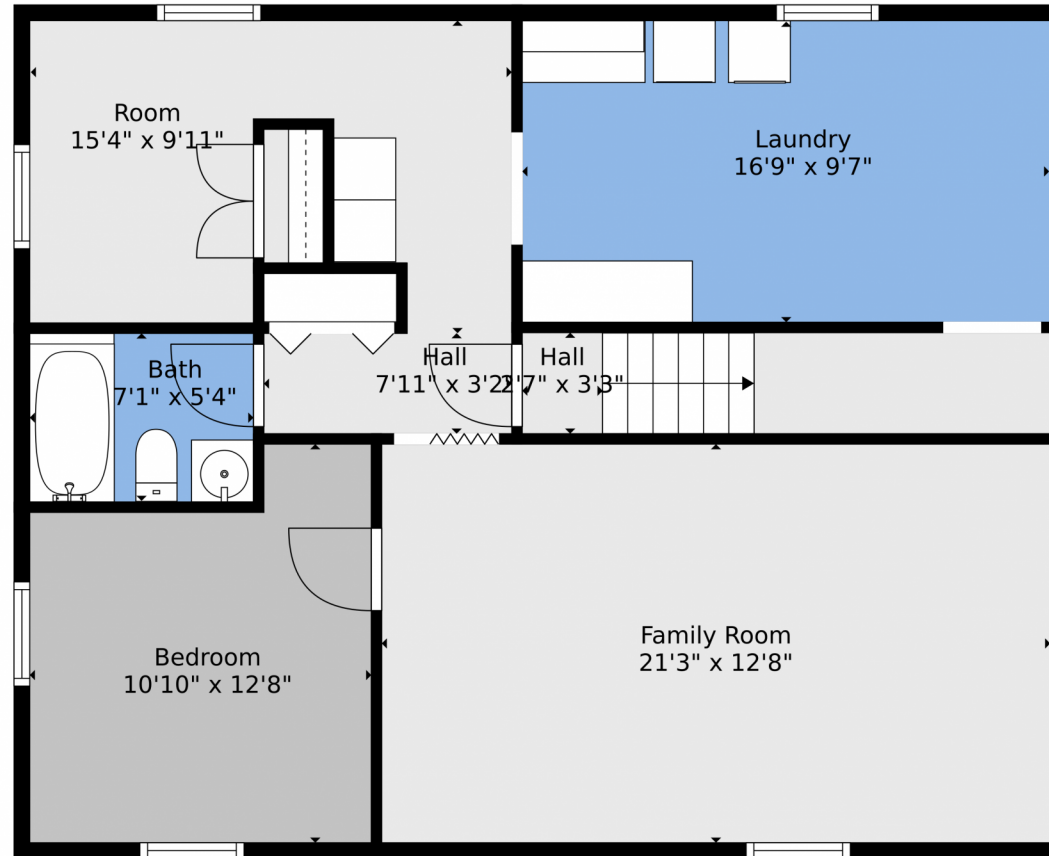
Disclaimer: Sizes and Dimensions are Approximate, Actual May Vary.



Scott & Carli Nitzel
970-590-5450
scott@nexthomefoundations.com



3208 West 5th Street Road, Greeley, CO 80634 — Basement

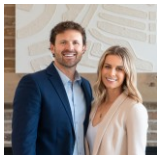


TOTAL: 1700 sq. ft
FLOOR 1: 850 sq. ft, FLOOR 2: 850 sq. ft
EXCLUDED AREAS: GARAGE: 276 sq. ft, PORCH: 30 sq. ft, PATIO: 112 sq. ft,
WALLS: 142 sq. ft

Floor Plan Created By V1photos.com, Measurements Deamed Highly Reliable But Not Guaranteed.



Disclaimer: Sizes and Dimensions are Approximate, Actual May Vary.



Scott & Carli Nitzel
970-590-5450
scott@nexthomefoundations.com



Scan code
for more
property
details



3208 West 5th Street Road, Greeley, CO 80634 — All Levels

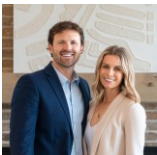


TOTAL: 1700 sq. ft
FLOOR 1: 850 sq. ft, FLOOR 2: 850 sq. ft
EXCLUDED AREAS: GARAGE: 276 sq. ft, PORCH: 30 sq. ft, PATIO: 112 sq. ft,
WALLS: 142 sq. ft

Floor Plan Created By V1photos.com, Measurements Deamed Highly Reliable But Not Guaranteed.



Disclaimer: Sizes and Dimensions are Approximate, Actual May Vary.



Scott & Carli Nitzel
970-590-5450
scott@nexthomefoundations.com



Scan code
for more
property
details