



14878 East Aberdeen Avenue
Centennial, CO 80016
COMMUNITY: Orchard Valley at Cherry Creek Park

MLS # 3278560
PRICE \$917,700



Single Family



4138 SQFT



5 Beds



5 Baths



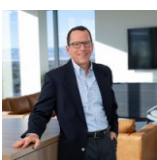
3 Car



0.17 Acre

PROPERTY DETAILS

Located in Orchard Valley at Cherry Creek Park, this exquisite 5-bedroom, 5-bath home combines sophistication with convenience. In the Cherry Creek School District and near Regis High School, it features a stunning two-story entry and an open layout. The formal living room flows into a dining area, ideal for entertaining. The chef's kitchen boasts stainless steel appliances, double ovens, and a center island, leading to a private backyard with mature trees and a gas grill line. The family room includes a cozy gas fireplace. The main level also has an executive office, which can convert to a sixth bedroom. Upstairs, the primary suite offers a spa-like bath and walk-in closet. The finished basement includes a home theater, bar, and game room. Enjoy neighborhood amenities like a pool and clubhouse, just 30 minutes from DTC and I-25. Schedule your tour today!



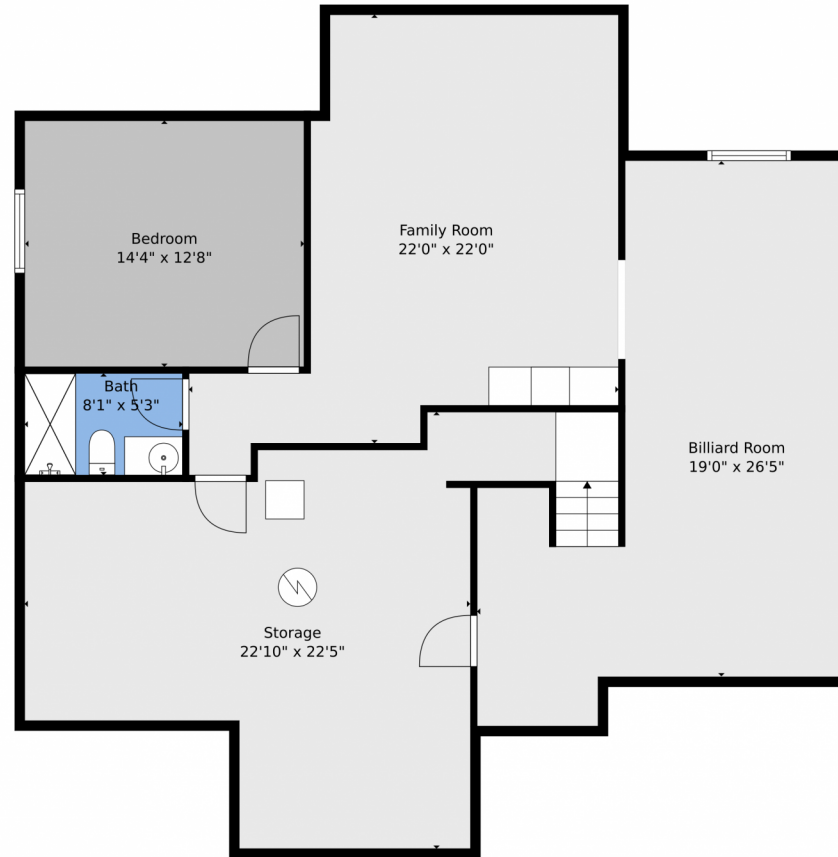
Tom Gross
303-591-2116
tom@tomgrossteam.com
<https://www.tomgrossteam.com>



Scan code
for more
property
details



14878 East Aberdeen Avenue, Centennial, CO 80016 — Lower Level

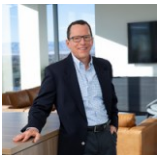


TOTAL: 3904 sq. ft
BELOW GROUND: 1011 sq. ft, FLOOR 2: 1533 sq. ft, FLOOR 3: 1360 sq. ft
EXCLUDED AREAS: STORAGE: 396 sq. ft, GARAGE: 697 sq. ft, PORCH: 115 sq. ft,
PATIO: 167 sq. ft, FIREPLACE: 11 sq. ft, OPEN TO BELOW: 571 sq. ft,
WALLS: 324 sq. ft

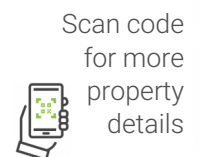
Floor Plan Created By V1photos.com, Measurements Deamed Highly Reliable But Not Guaranteed.



Disclaimer: Sizes and Dimensions are Approximate, Actual May Vary.



Tom Gross
303-591-2116
tom@tomgrossteam.com
<https://www.tomgrossteam.com>



Scan code
for more
property
details



14878 East Aberdeen Avenue, Centennial, CO 80016 — Main

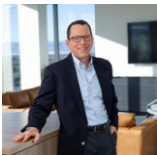


TOTAL: 3904 sq. ft
BELOW GROUND: 1011 sq. ft, FLOOR 2: 1533 sq. ft, FLOOR 3: 1360 sq. ft
EXCLUDED AREAS: STORAGE: 396 sq. ft, GARAGE: 697 sq. ft, PORCH: 115 sq. ft,
PATIO: 167 sq. ft, FIREPLACE: 11 sq. ft, OPEN TO BELOW: 571 sq. ft,
WALLS: 324 sq. ft

Floor Plan Created By V1photos.com, Measurements Deamed Highly Reliable But Not Guaranteed.



Disclaimer: Sizes and Dimensions are Approximate, Actual May Vary.



Tom Gross
303-591-2116
tom@tomgrossteam.com
<https://www.tomgrossteam.com>



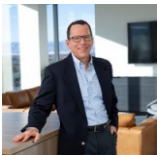
14878 East Aberdeen Avenue, Centennial, CO 80016 — 2nd Level



TOTAL: 3904 sq. ft
BELOW GROUND: 1011 sq. ft, FLOOR 2: 1533 sq. ft, FLOOR 3: 1360 sq. ft
EXCLUDED AREAS: STORAGE: 396 sq. ft, GARAGE: 697 sq. ft, PORCH: 115 sq. ft,
PATIO: 167 sq. ft, FIREPLACE: 11 sq. ft, OPEN TO BELOW: 571 sq. ft,
WALLS: 324 sq. ft

Floor Plan Created By V1photos.com, Measurements Deamed Highly Reliable But Not Guaranteed.

Disclaimer: Sizes and Dimensions are Approximate, Actual May Vary.

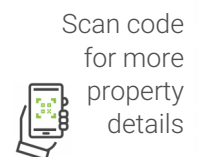


Tom Gross

303-591-2116

tom@tomgrossteam.com

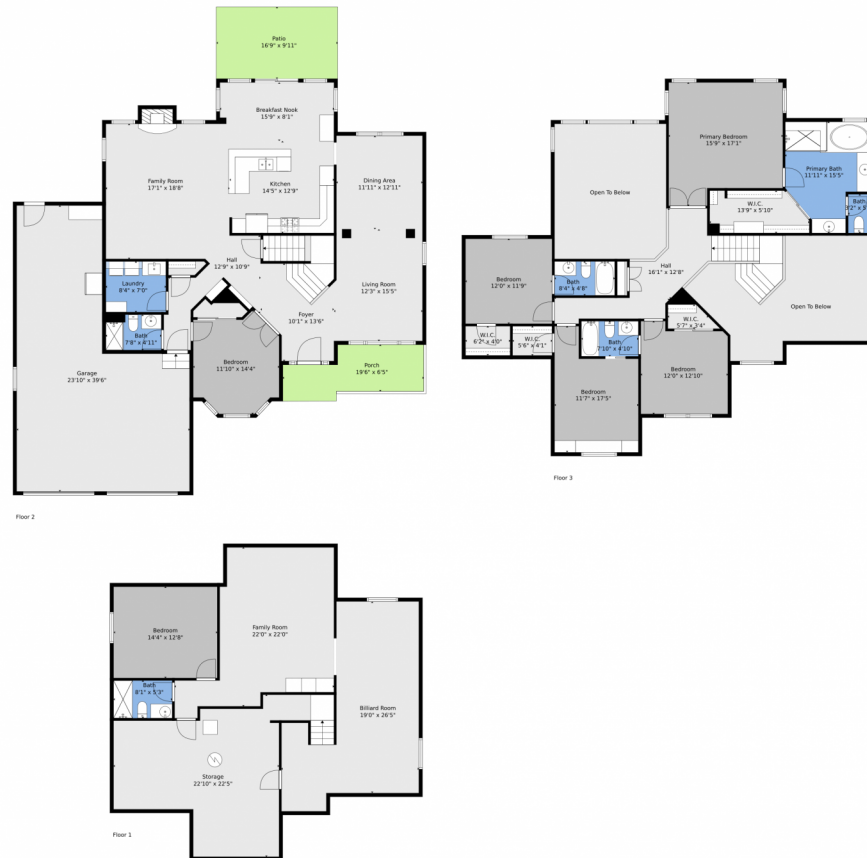
<https://www.tomgrossteam.com>



Scan code
for more
property
details



14878 East Aberdeen Avenue, Centennial, CO 80016 — All Levels

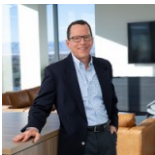


TOTAL: 3904 sq. ft
 BELOW GROUND: 1011 sq. ft, FLOOR 2: 1533 sq. ft, FLOOR 3: 1360 sq. ft
 EXCLUDED AREAS: STORAGE: 396 sq. ft, GARAGE: 697 sq. ft, PORCH: 115 sq. ft,
 PATIO: 167 sq. ft, FIREPLACE: 11 sq. ft, OPEN TO BELOW: 571 sq. ft,
 WALLS: 324 sq. ft

Floor Plan Created By V1photos.com, Measurements Deamed Highly Reliable But Not Guaranteed.



Disclaimer: Sizes and Dimensions are Approximate, Actual May Vary.



Tom Gross
 303-591-2116
 tom@tomgrossteam.com
<https://www.tomgrossteam.com>

