

Main Floor Living in Timber Ridge



Single Family



6478 SQFT



5 Beds



3/1 Baths



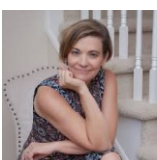
3 Car



0.5 Acre

PROPERTY DETAILS

Experience golden mornings and serene summer evenings in this upgraded ranch-style home in Timber Ridge. The main level features an open concept with rich Florence Maple hardwood floors. The designer kitchen boasts White Spring leathered granite, a Wolf six-burner gas range, double ovens, a Sub-Zero refrigerator, and custom cabinetry. Expansive east-facing windows fill the space with light, perfect for morning coffee. Double French doors lead to a large back deck overlooking a half-acre lot with a fire pit. The main-floor primary suite includes a five-piece bath, with two additional bedrooms, all featuring custom walk in closets. The garden-level basement offers recreation space, two more bedrooms, and a three-quarter bath. Enjoy a finished 3-car garage and lower taxes/HOA fees compared to nearby communities, saving over \$9,000 annually. This home combines elegance with practicality in a desirable neighborhood.



Jill Clark
720-581-5035
jillclarkmoves@kw.com



Scan code
for more
property
details

