



405 Maple Avenue  
 Eaton, CO 80615  
 COMMUNITY: Town of Eaton



Single Family



824 SQFT



2 Beds



1 Baths



1 Car



0.09 Acre

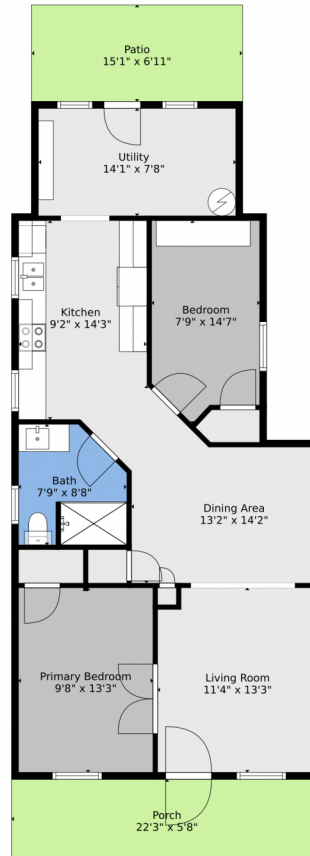


**Wesley Lamb**  
 970-302-4419  
 wes@searsrealestate.com



Scan code  
 for more  
 property  
 details





**TOTAL: 782 sq. ft**  
BELOW GROUND: 0 sq. ft, BELOW GROUND: 782 sq. ft  
EXCLUDED AREAS: GARAGE: 303 sq. ft, PORCH: 126 sq. ft, PATIO: 105 sq. ft,  
UTILITY: 109 sq. ft

Floor Plan Created By V1photos.com, Measurements Deamed Highly Reliable But Not Guaranteed.



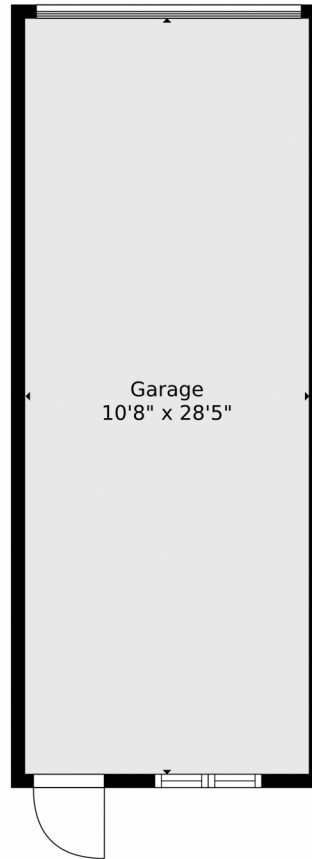
Disclaimer: Sizes and Dimensions are Approximate, Actual May Vary.



**Wesley Lamb**  
970-302-4419  
wes@searsrealestate.com



# 405 Maple Avenue, Eaton, CO 80615 – Detached Garage



**TOTAL: 782 sq. ft**  
BELOW GROUND: 0 sq. ft, BELOW GROUND: 782 sq. ft  
EXCLUDED AREAS: GARAGE: 303 sq. ft, PORCH: 126 sq. ft, PATIO: 105 sq. ft,  
UTILITY: 109 sq. ft

Floor Plan Created By V1photos.com, Measurements Deamed Highly Reliable But Not Guaranteed.



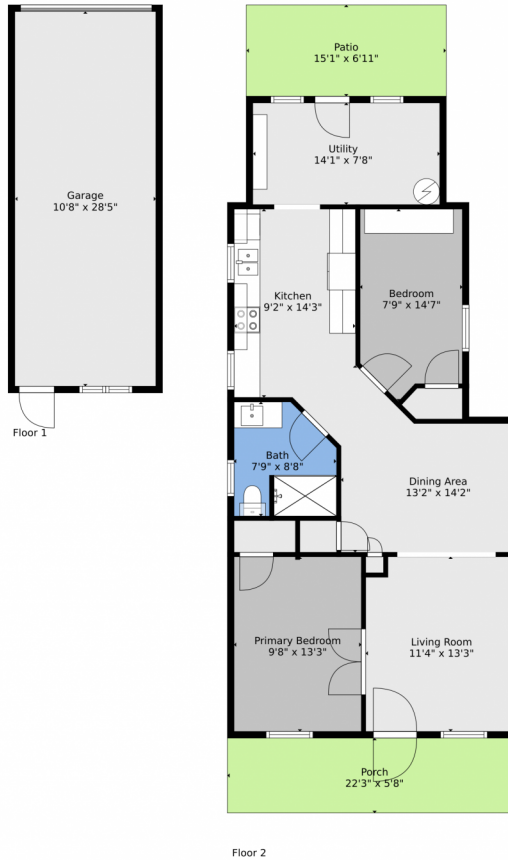
Disclaimer: Sizes and Dimensions are Approximate, Actual May Vary.



**Wesley Lamb**  
970-302-4419  
wes@searsrealestate.com



# 405 Maple Avenue, Eaton, CO 80615 – All Levels



**TOTAL: 782 sq. ft**  
BELOW GROUND: 0 sq. ft, BELOW GROUND: 782 sq. ft  
EXCLUDED AREAS: GARAGE: 303 sq. ft, PORCH: 126 sq. ft, PATIO: 105 sq. ft,  
UTILITY: 109 sq. ft

Floor Plan Created By V1photos.com, Measurements Deamed Highly Reliable But Not Guaranteed.



Disclaimer: Sizes and Dimensions are Approximate, Actual May Vary.



**Wesley Lamb**  
970-302-4419  
wes@searsrealestate.com

