



7125 Higher Ridges Court
Colorado Springs, CO 80919
COMMUNITY: Discovery District 20



Single Family



3120 SQFT



5 Beds



3/1 Baths



4 Car



0.41 Acre



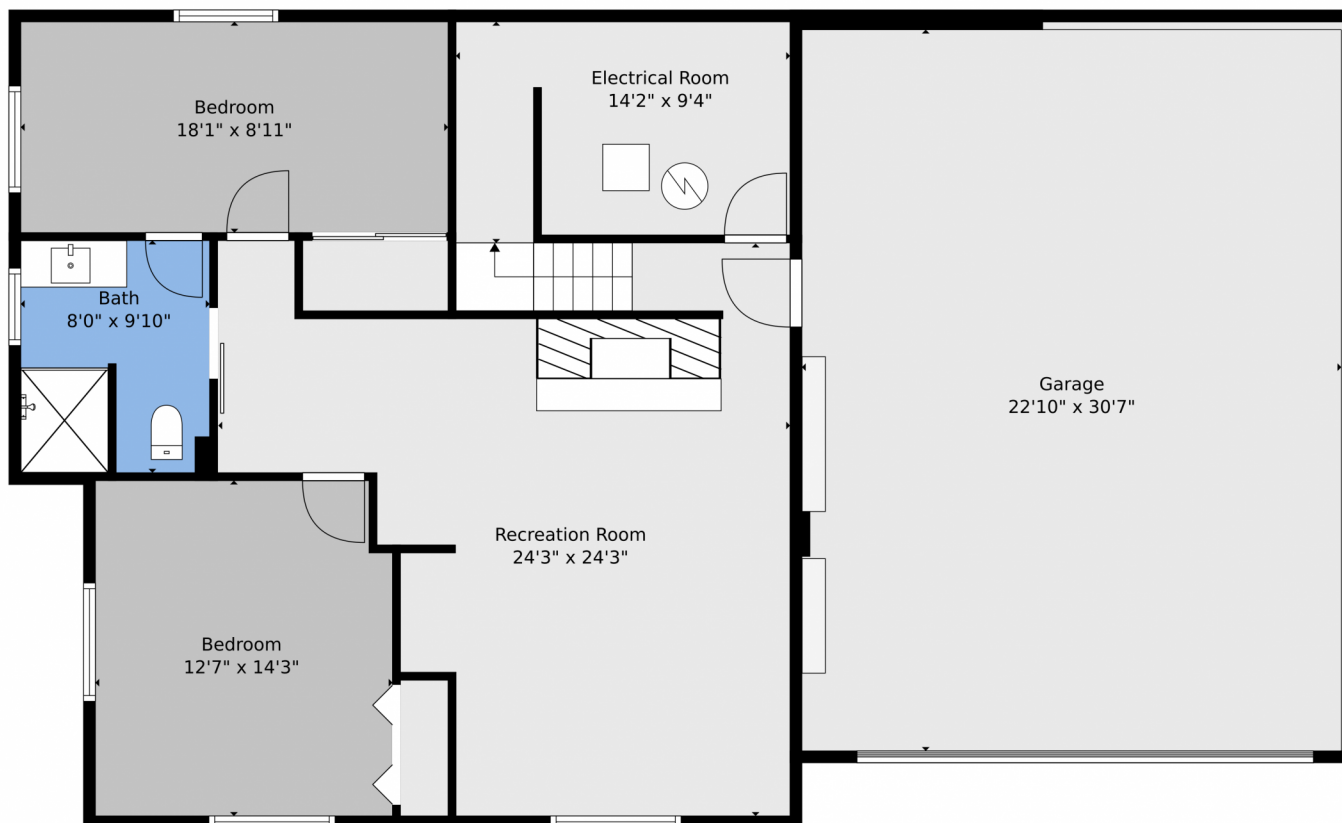
Amanda Moss
719-213-9324
spark.tree.inc@gmail.com



Scan code
for more
property
details



7125 Higher Ridges Court, Colorado Springs, CO 80919 – Lower Level



TOTAL: 2805 sq. ft
BELOW GROUND: 922 sq. ft, FLOOR 2: 1883 sq. ft
EXCLUDED AREAS: ELECTRICAL ROOM: 129 sq. ft, GARAGE: 717 sq. ft, DECK: 371 sq. ft,
PATIO: 380 sq. ft, PORCH: 240 sq. ft, BAY WINDOW: 12 sq. ft

Floor Plan Created By V1photos.com, Measurements Deamed Highly Reliable But Not Guaranteed.



Disclaimer: Sizes and Dimensions are Approximate, Actual May Vary.



Amanda Moss
719-213-9324
spark.tree.inc@gmail.com



Scan code
for more
property
details



7125 Higher Ridges Court, Colorado Springs, CO 80919 — Main



TOTAL: 2805 sq. ft
BELOW GROUND: 922 sq. ft, FLOOR 2: 1883 sq. ft
EXCLUDED AREAS: ELECTRICAL ROOM: 129 sq. ft, GARAGE: 717 sq. ft, DECK: 371 sq. ft,
PATIO: 380 sq. ft, PORCH: 240 sq. ft, BAY WINDOW: 12 sq. ft

Floor Plan Created By V1photos.com, Measurements Deamed Highly Reliable But Not Guaranteed.



Disclaimer: Sizes and Dimensions are Approximate, Actual May Vary.



Amanda Moss
719-213-9324
spark.tree.inc@gmail.com



7125 Higher Ridges Court, Colorado Springs, CO 80919 — All Levels



TOTAL: 2805 sq. ft
BELOW GROUND: 922 sq. ft, FLOOR 2: 1883 sq. ft
EXCLUDED AREAS: ELECTRICAL ROOM: 129 sq. ft, GARAGE: 717 sq. ft, DECK: 371 sq. ft,
PATIO: 380 sq. ft, PORCH: 240 sq. ft, BAY WINDOW: 12 sq. ft

Floor Plan Created By V1photos.com, Measurements Deamed Highly Reliable But Not Guaranteed.



Disclaimer: Sizes and Dimensions are Approximate, Actual May Vary.



Amanda Moss
719-213-9324
spark.tree.inc@gmail.com



Scan code
for more
property
details

