



Single Family



3217 SQFT



4.48 Acre



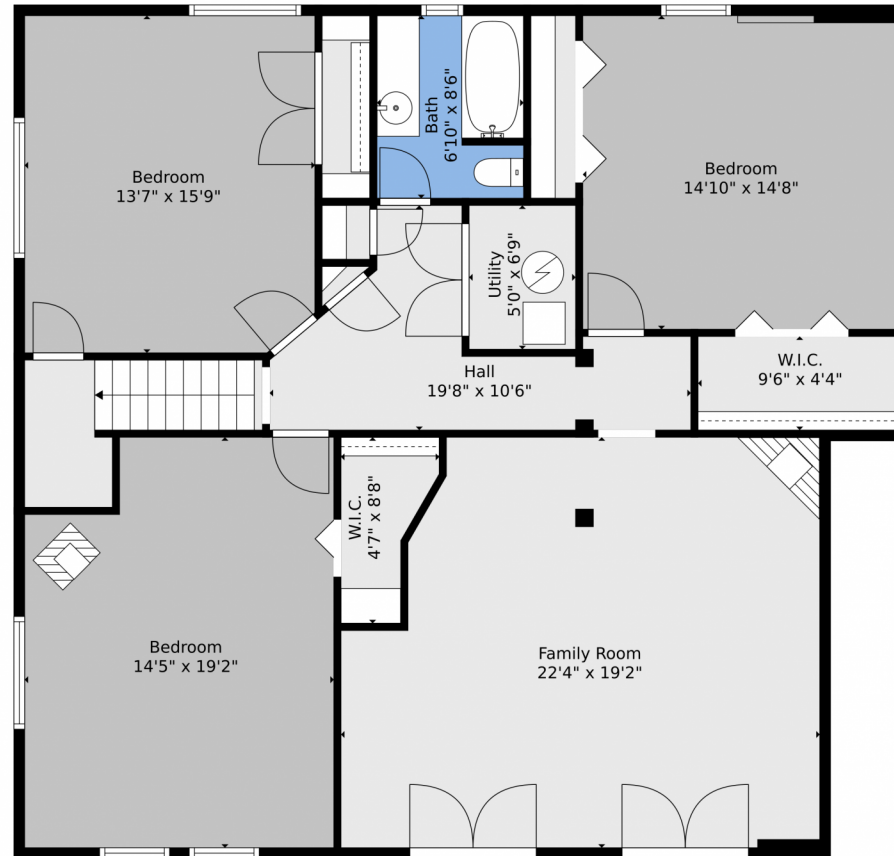
Casey Hodges
303-912-8451
caseyhodges@kw.com



Scan code
for more
property
details



10786 Marclif Road, Conifer, CO 80433 — Lower Level



TOTAL: 3016 sq. ft
BELOW GROUND: 1482 sq. ft, FLOOR 2: 0 sq. ft, FLOOR 3: 1534 sq. ft
EXCLUDED AREAS: UTILITY: 33 sq. ft, GARAGE: 542 sq. ft, SHED: 212 sq. ft,
PORCH: 211 sq. ft, DECK: 876 sq. ft

Floor Plan Created By V1photos.com, Measurements Deamed Highly Reliable But Not Guaranteed.



Disclaimer: Sizes and Dimensions are Approximate, Actual May Vary.



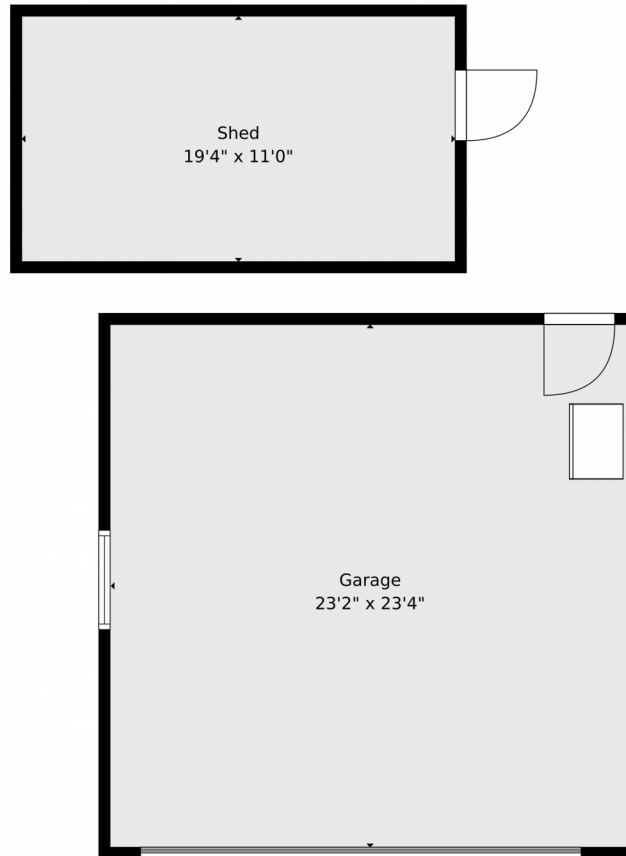
Casey Hodges
303-912-8451
caseyhodges@kw.com



Scan code
for more
property
details



10786 Marclif Road, Conifer, CO 80433 — Detached Garage



TOTAL: 3016 sq. ft
BELOW GROUND: 1482 sq. ft, FLOOR 2: 0 sq. ft, FLOOR 3: 1534 sq. ft
EXCLUDED AREAS: UTILITY: 33 sq. ft, GARAGE: 542 sq. ft, SHED: 212 sq. ft,
PORCH: 211 sq. ft, DECK: 876 sq. ft

Floor Plan Created By V1photos.com, Measurements Deamed Highly Reliable But Not Guaranteed.



Disclaimer: Sizes and Dimensions are Approximate, Actual May Vary.

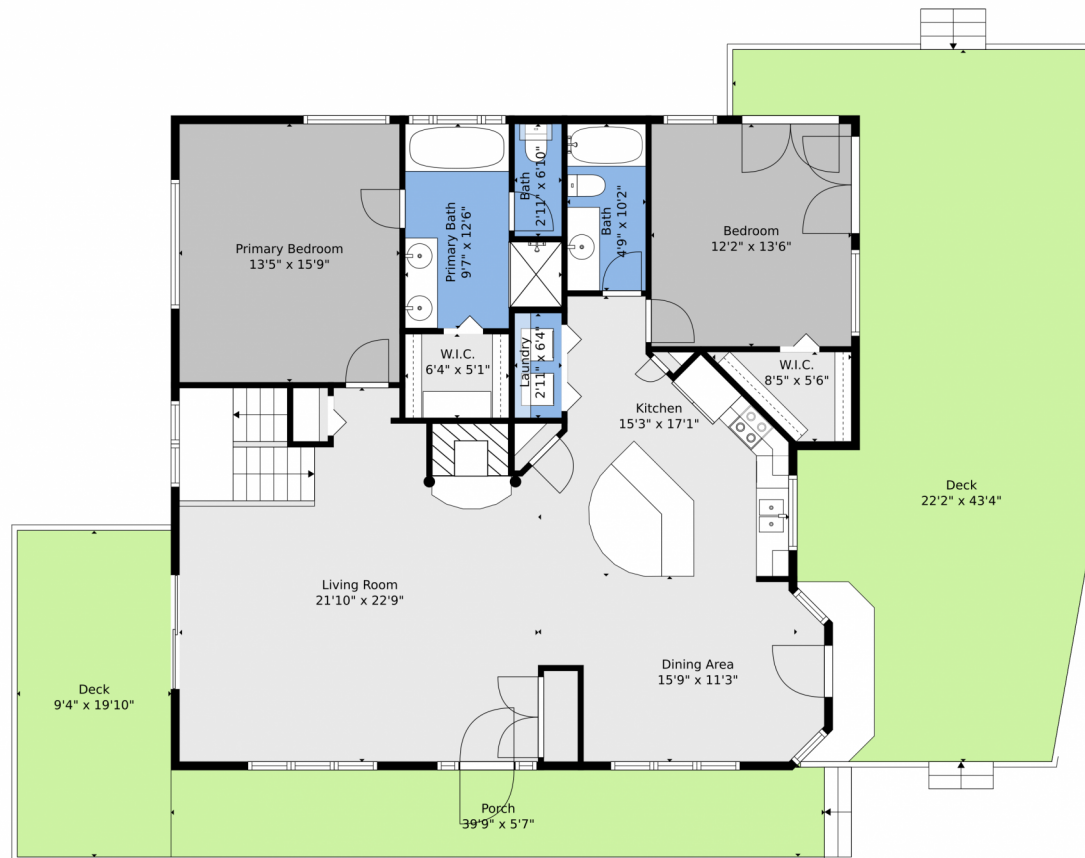


Casey Hodges
303-912-8451
caseyhodges@kw.com



Scan code
for more
property
details





TOTAL: 3016 sq. ft
BELOW GROUND: 1482 sq. ft, FLOOR 2: 0 sq. ft, FLOOR 3: 1534 sq. ft
EXCLUDED AREAS: UTILITY: 33 sq. ft, GARAGE: 542 sq. ft, SHED: 212 sq. ft,
PORCH: 211 sq. ft, DECK: 876 sq. ft

Floor Plan Created By V1photos.com, Measurements Deamed Highly Reliable But Not Guaranteed.

Disclaimer: Sizes and Dimensions are Approximate, Actual May Vary.



Casey Hodges
303-912-8451
caseyhodges@kw.com



Scan code
for more
property
details



10786 Marclif Road, Conifer, CO 80433 — All Levels



TOTAL: 3016 sq. ft
 BELOW GROUND: 1482 sq. ft, FLOOR 2: 0 sq. ft, FLOOR 3: 1534 sq. ft
 EXCLUDED AREAS: UTILITY: 33 sq. ft, GARAGE: 542 sq. ft, SHED: 212 sq. ft,
 PORCH: 211 sq. ft, DECK: 876 sq. ft

Floor Plan Created By V1photos.com, Measurements Deamed Highly Reliable But Not Guaranteed.



Disclaimer: Sizes and Dimensions are Approximate, Actual May Vary.



Casey Hodges
 303-912-8451
 caseyhodges@kw.com

