




23730 County Road 41
 LaSalle, CO 80645
 COMMUNITY: rural

MLS # 1032806




 Single Family

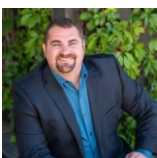
 2400 SQFT

 4 Beds

 2 Baths

 2 Car

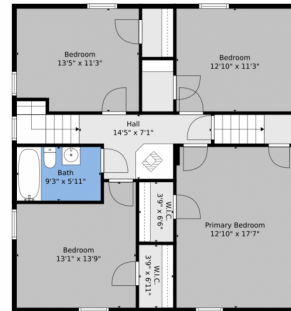
 1.58 Acre



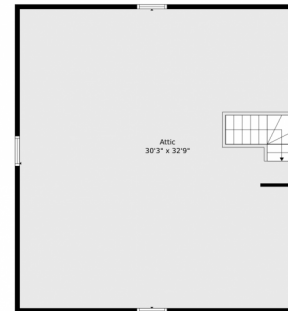
Brad Inhulsen
 970-584-4144
 brad@yournocorealtor.com



23730 County Road 41, LaSalle, CO 80645 – All Levels



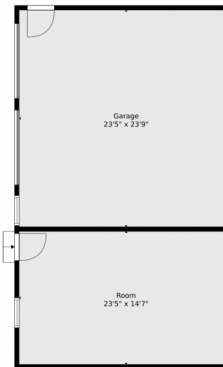
Floor 3



Floor 4



Floor 2



Floor 1

TOTAL: 2126 sq. ft
BELOW GROUND: 0 sq. ft, FLOOR 2: 1134 sq. ft, FLOOR 3: 992 sq. ft, FLOOR 4: 0 sq. ft
EXCLUDED AREAS: ROOM: 341 sq. ft, GARAGE: 556 sq. ft, PORCH: 285 sq. ft,
LOW CEILING: 733 sq. ft, ATTIC: 260 sq. ft

Floor Plan Created By V1photos.com, Measurements Deamed Highly Reliable But Not Guaranteed.



Disclaimer: Sizes and Dimensions are Approximate, Actual May Vary.



Brad Inhulsen
970-584-4144
brad@yournocorealtor.com

