

Breathtaking Mountain Views + Golf Course Living



Townhouse



3050 SQFT



3 Beds



3 Baths



2 Car

PROPERTY DETAILS

Experience stunning mountain views in this upgraded townhouse adjacent to The Broadlands Golf Course and a tranquil pond. This rare location offers a peaceful backdrop with beautiful sunsets right from your patio. Inside, enjoy rich hardwood flooring, a chef-inspired kitchen with granite countertops and Bosch appliances, and custom wood shutters. The finished basement is perfect for entertaining or as a guest space, while the garage features an epoxy-coated floor. Recent upgrades ensure comfort and efficiency, including a fresh exterior and a soon-to-be-installed new roof. This home combines modern upgrades with a unique golf course lifestyle, making everyday living feel like a retreat.



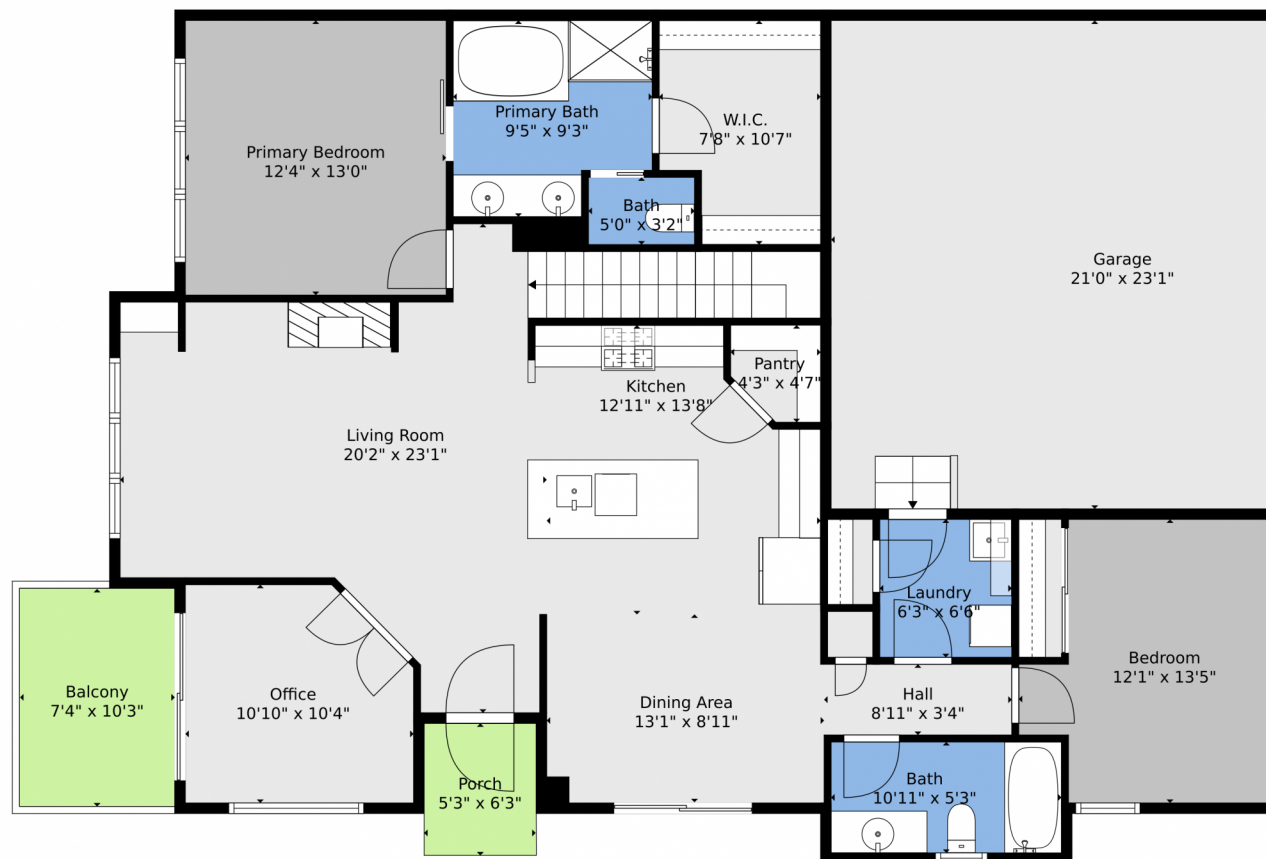
Amanda Duran
720-427-9882
amandasvipsservice@yahoo.com



Scan code
for more
property
details



3751 W 136th Ave Unit F4, Broomfield, CO 80023 – Main



TOTAL: 2533 sq. ft
BELOW GROUND: 1093 sq. ft, FLOOR 2: 1440 sq. ft
EXCLUDED AREAS: STORAGE: 227 sq. ft, GARAGE: 485 sq. ft, BALCONY: 76 sq. ft,
PORCH: 33 sq. ft

Floor Plan Created By V1photos.com, Measurements Deamed Highly Reliable But Not Guaranteed.

Disclaimer: Sizes and Dimensions are Approximate, Actual May Vary.



Amanda Duran
720-427-9882
amandasvipservice@yahoo.com



Scan code
for more
property
details



3751 W 136th Ave Unit F4, Broomfield, CO 80023 — Lower Level



TOTAL: 2533 sq. ft
BELOW GROUND: 1093 sq. ft, FLOOR 2: 1440 sq. ft
EXCLUDED AREAS: STORAGE: 227 sq. ft, GARAGE: 485 sq. ft, BALCONY: 76 sq. ft,
PORCH: 33 sq. ft

Floor Plan Created By V1photos.com, Measurements Deamed Highly Reliable But Not Guaranteed.



Disclaimer: Sizes and Dimensions are Approximate, Actual May Vary.



Amanda Duran
720-427-9882
amandasvipservice@yahoo.com



Scan code
for more
property
details



3751 W 136th Ave Unit F4, Broomfield, CO 80023 — All Levels



Floor 2



Floor 1

TOTAL: 2533 sq. ft
BELOW GROUND: 1093 sq. ft, FLOOR 2: 1440 sq. ft
EXCLUDED AREAS: STORAGE: 227 sq. ft, GARAGE: 485 sq. ft, BALCONY: 76 sq. ft,
PORCH: 33 sq. ft

Floor Plan Created By V1photos.com, Measurements Deamed Highly Reliable But Not Guaranteed.



Disclaimer: Sizes and Dimensions are Approximate, Actual May Vary.



Amanda Duran
720-427-9882
amandasvipservice@yahoo.com



Scan code
for more
property
details

