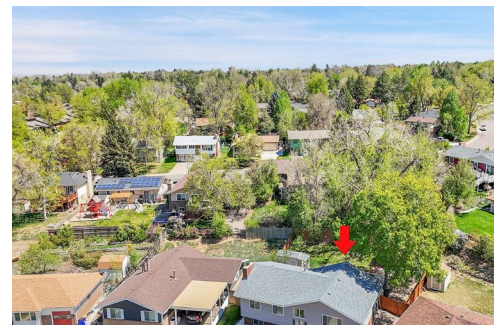





1820 26th Avenue Place
Greeley, CO 80634



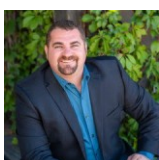
 Single Family

 2100 SQFT

 4 Beds

 2 Baths

 2 Car



Brad Inhulsen
970-584-4144
brad@yournocorealtor.com



1820 26th Avenue Place, Greeley, CO 80634 — Main



TOTAL: 1986 sq. ft
FLOOR 1: 645 sq. ft, FLOOR 2: 1341 sq. ft
EXCLUDED AREAS: GARAGE: 421 sq. ft, STORAGE: 249 sq. ft, PATIO: 508 sq. ft,
FIREPLACE: 11 sq. ft, PORCH: 244 sq. ft, DECK: 296 sq. ft

Floor Plan Created By V1photos.com, Measurements Deamed Highly Reliable But Not Guaranteed.



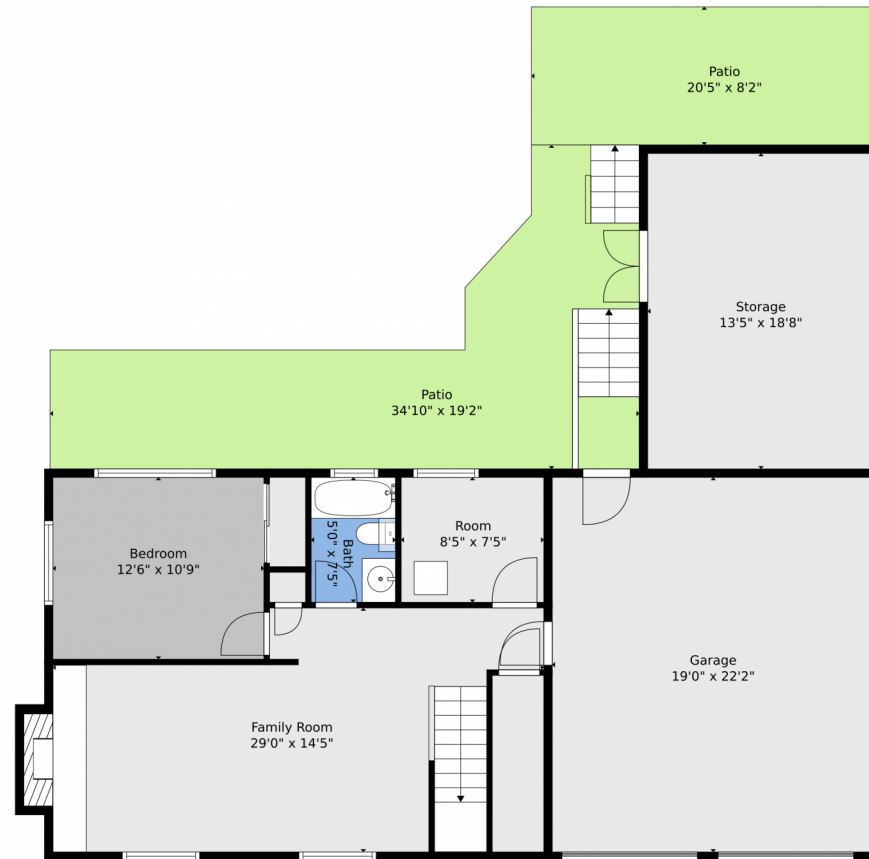
Disclaimer: Sizes and Dimensions are Approximate, Actual May Vary.



Brad Inhulsen
970-584-4144
brad@yournocorealtor.com



1820 26th Avenue Place, Greeley, CO 80634 — 2nd Level



TOTAL: 1986 sq. ft
FLOOR 1: 645 sq. ft, FLOOR 2: 1341 sq. ft
EXCLUDED AREAS: GARAGE: 421 sq. ft, STORAGE: 249 sq. ft, PATIO: 508 sq. ft,
FIREPLACE: 11 sq. ft, PORCH: 244 sq. ft, DECK: 296 sq. ft

Floor Plan Created By V1photos.com, Measurements Deamed Highly Reliable But Not Guaranteed.



Disclaimer: Sizes and Dimensions are Approximate, Actual May Vary.



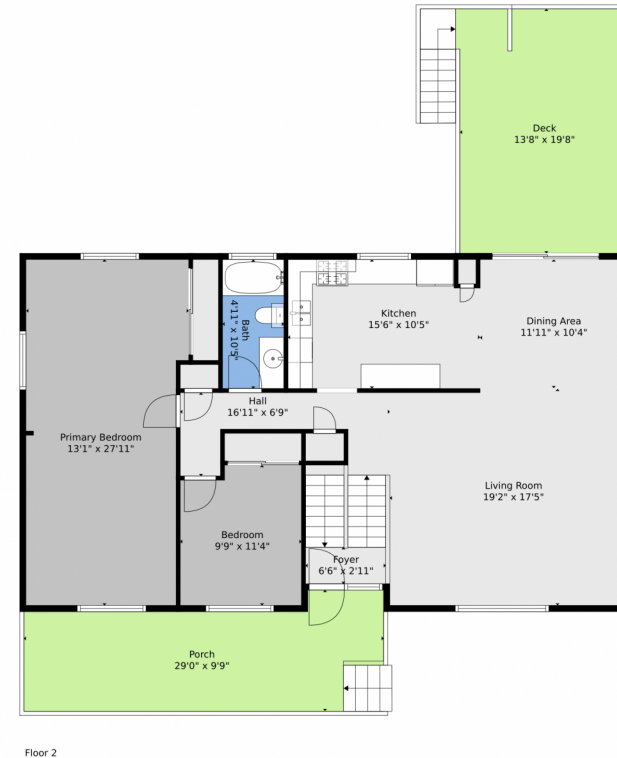
Brad Inhulsen
970-584-4144
brad@yournocorealtor.com



Scan code
for more
property
details



1820 26th Avenue Place, Greeley, CO 80634 — All Levels



TOTAL: 1986 sq. ft
FLOOR 1: 645 sq. ft, FLOOR 2: 1341 sq. ft
EXCLUDED AREAS: GARAGE: 421 sq. ft, STORAGE: 249 sq. ft, PATIO: 508 sq. ft,
FIREPLACE: 11 sq. ft, PORCH: 244 sq. ft, DECK: 296 sq. ft

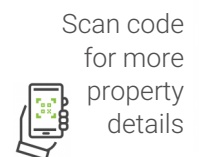
Floor Plan Created By V1photos.com, Measurements Deamed Highly Reliable But Not Guaranteed.



Disclaimer: Sizes and Dimensions are Approximate, Actual May Vary.



Brad Inhulsen
970-584-4144
brad@yournocorealtor.com



Scan code
for more
property
details

