

COMPASS

7402 W 76th Avenue  
Arvada, CO 80003  
COMMUNITY: Parkway Estates

MLS # 2773993  
PRICE \$425,000



Vacant Land



0.73 Acre

## PROPERTY DETAILS

Build your dream home on this undeveloped .7 acre lot in Arvada. Enjoy stunning views of Indian Tree Golf Course and the mountains. The peaceful location has no HOA or covenants, making it ideal for a walk-out basement. Convenient access to I-70, the Wadsworth corridor, shopping, and public transportation.



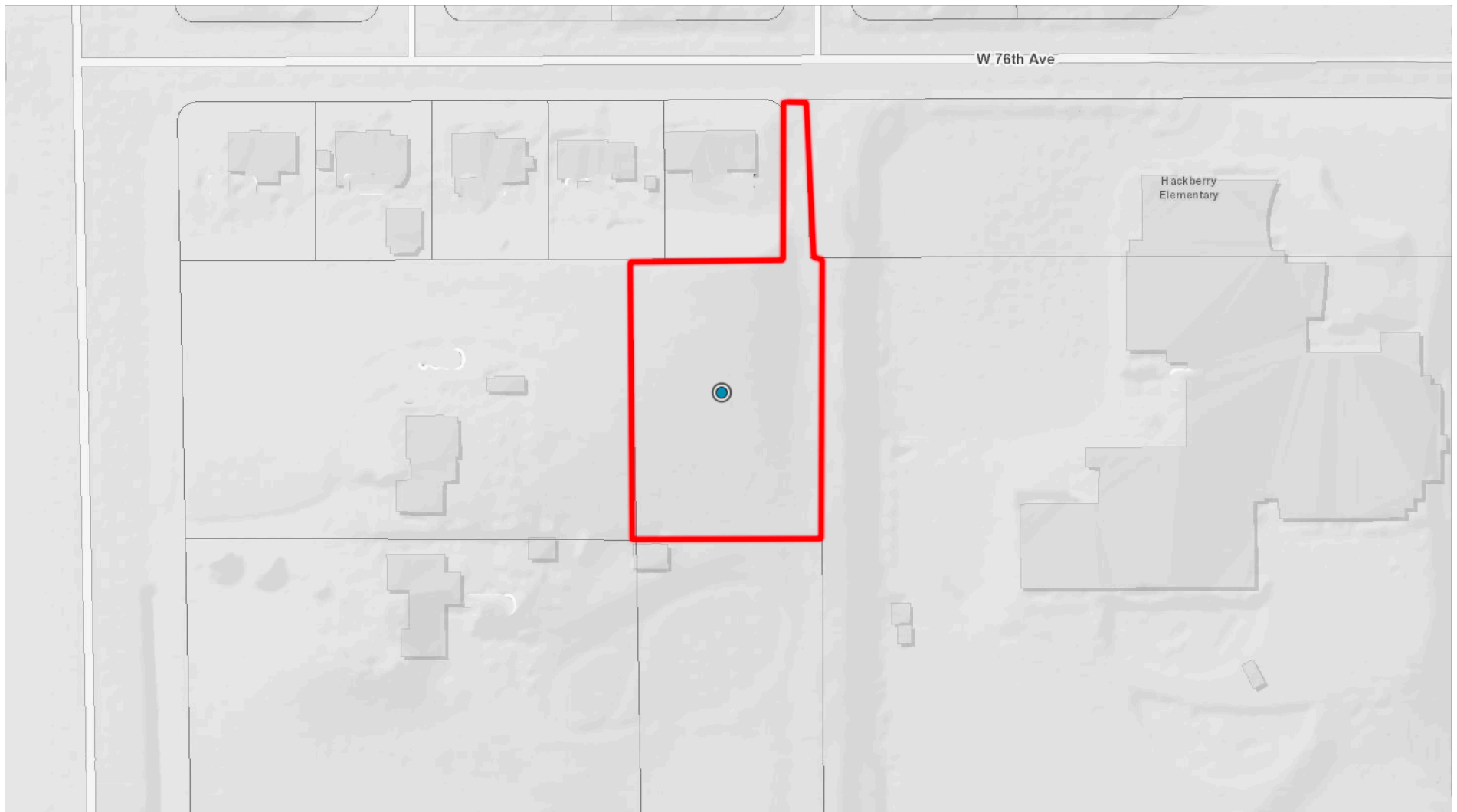
**Jody Sheahan**  
303-229-0577  
jody.sheahan@compass.com



Scan code  
for more  
property  
details



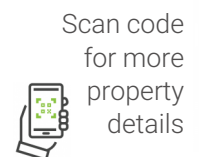
## 7402 W 76th Avenue, Arvada, CO 80003 – Land Parcel



Disclaimer: Sizes and Dimensions are Approximate, Actual May Vary.



**Jody Sheahan**  
303-229-0577  
jody.sheahan@compass.com



Scan code  
for more  
property  
details

