

COMPASS

15740 Sandtrap Way  
Morrison, CO 80465  
**COMMUNITY:** Willow Springs Country Club

SITTING ON THE GOLF COURSE with both \*\*mountain and city views\*\*



Single Family



2592 SQFT



4 Beds



2/1 Baths



2 Car



0.17 Acre

COMPASS

Clare Day  
720-341-7456  
homes@clareday.com  
<https://www.clareday.com/>



Scan code  
for more  
property  
details



# 15740 Sandtrap Way, Morrison, CO 80465 — Main



**TOTAL: 2538 sq. ft**  
BELOW GROUND: 508 sq. ft, FLOOR 2: 966 sq. ft, FLOOR 3: 1064 sq. ft  
EXCLUDED AREAS: STORAGE: 182 sq. ft, BASEMENT: 258 sq. ft, GARAGE: 392 sq. ft,  
PORCH: 48 sq. ft, DECK: 696 sq. ft, FIREPLACE: 11 sq. ft,  
OPEN TO BELOW: 193 sq. ft, BALCONY: 138 sq. ft

Floor Plan Created By V1photos.com, Measurements Deamed Highly Reliable But Not Guaranteed.



Disclaimer: Sizes and Dimensions are Approximate, Actual May Vary.

COMPASS

Clare Day  
720-341-7456  
homes@clareday.com  
<https://www.clareday.com/>

Scan code  
for more  
property  
details



# 15740 Sandtrap Way, Morrison, CO 80465 — 2nd Level



**TOTAL: 2538 sq. ft**  
BELOW GROUND: 508 sq. ft, FLOOR 2: 966 sq. ft, FLOOR 3: 1064 sq. ft  
EXCLUDED AREAS: STORAGE: 182 sq. ft, BASEMENT: 258 sq. ft, GARAGE: 392 sq. ft,  
PORCH: 48 sq. ft, DECK: 696 sq. ft, FIREPLACE: 11 sq. ft,  
OPEN TO BELOW: 193 sq. ft, BALCONY: 138 sq. ft

Floor Plan Created By V1photos.com, Measurements Deamed Highly Reliable But Not Guaranteed.



Disclaimer: Sizes and Dimensions are Approximate, Actual May Vary.

COMPASS

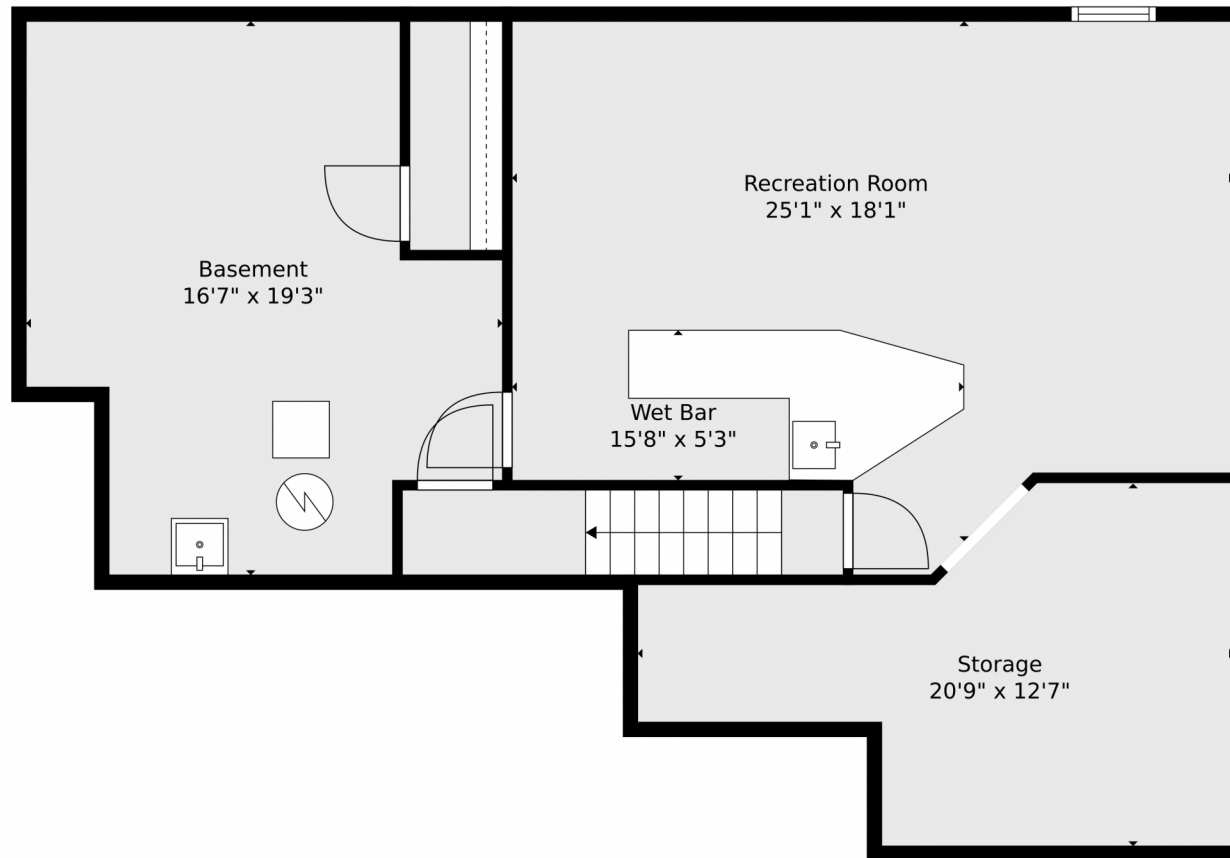
Clare Day  
720-341-7456  
homes@clareday.com  
<https://www.clareday.com/>

Scan code  
for more  
property  
details





# 15740 Sandtrap Way, Morrison, CO 80465 — Lower Level



**TOTAL: 2538 sq. ft**  
BELOW GROUND: 508 sq. ft, FLOOR 2: 966 sq. ft, FLOOR 3: 1064 sq. ft  
EXCLUDED AREAS: STORAGE: 182 sq. ft, BASEMENT: 258 sq. ft, GARAGE: 392 sq. ft,  
PORCH: 48 sq. ft, DECK: 696 sq. ft, FIREPLACE: 11 sq. ft,  
OPEN TO BELOW: 193 sq. ft, BALCONY: 138 sq. ft

Floor Plan Created By V1photos.com, Measurements Deamed Highly Reliable But Not Guaranteed.



Disclaimer: Sizes and Dimensions are Approximate, Actual May Vary.

COMPASS

Clare Day  
720-341-7456  
homes@clareday.com  
<https://www.clareday.com/>

Scan code  
for more  
property  
details

