



228 Birch Avenue  
Castle Rock, CO 80104  
COMMUNITY: Glover

MLS # 9914756  
PRICE \$680,000



Single Family



1600 SQFT



4 Beds



2 Baths



2 Car



0.76 Acre



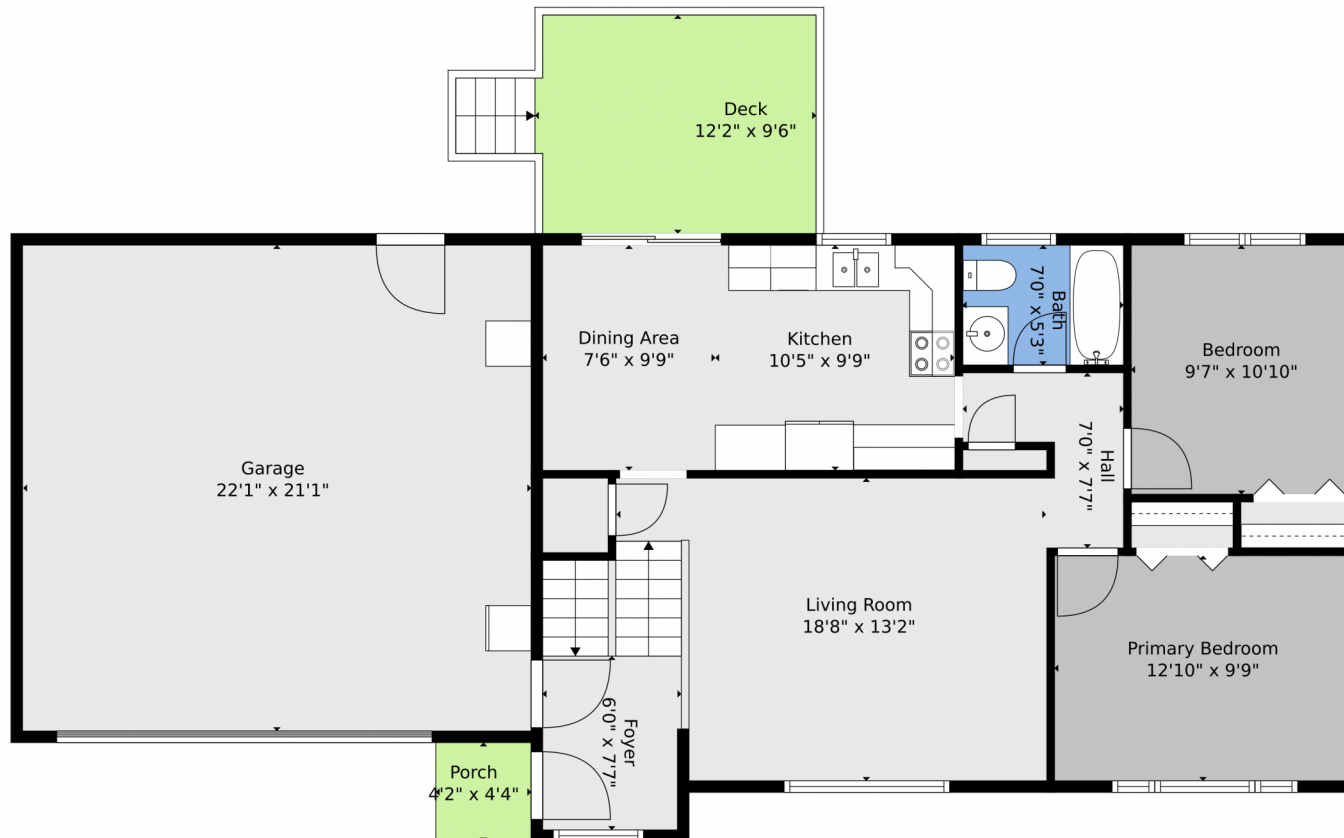
Tatyana Sturm  
720-350-5909  
tatyana@exitrealttydc.com  
<https://thestorckteam.com>



Scan code  
for more  
property  
details



## 228 Birch Avenue, Castle Rock, CO 80104 – Main



TOTAL: 1562 sq. ft.  
BELOW GROUND: 731 sq. ft, FLOOR 2: 831 sq. ft, FLOOR 3: 0 sq. ft  
EXCLUDED AREAS: GARAGE: 1837 sq. ft, DECK: 125 sq. ft, PORCH: 18 sq. ft  
Floor Plan Created By V1photos.com, Measurements Deamed Highly Reliable But Not Guaranteed.



Disclaimer: Sizes and Dimensions are Approximate, Actual May Vary.



**Tatyana Sturm**  
720-350-5909  
tatyana@exitrealtydtc.com  
<https://thestorckteam.com>



Scan code  
for more  
property  
details



## 228 Birch Avenue, Castle Rock, CO 80104 – Lower Level



TOTAL: 1562 sq. ft.  
BELOW GROUND: 731 sq. ft, FLOOR 2: 831 sq. ft, FLOOR 3: 0 sq. ft  
EXCLUDED AREAS: GARAGE: 1837 sq. ft, DECK: 125 sq. ft, PORCH: 18 sq. ft  
Floor Plan Created By V1photos.com, Measurements Deamed Highly Reliable But Not Guaranteed.



Disclaimer: Sizes and Dimensions are Approximate, Actual May Vary.



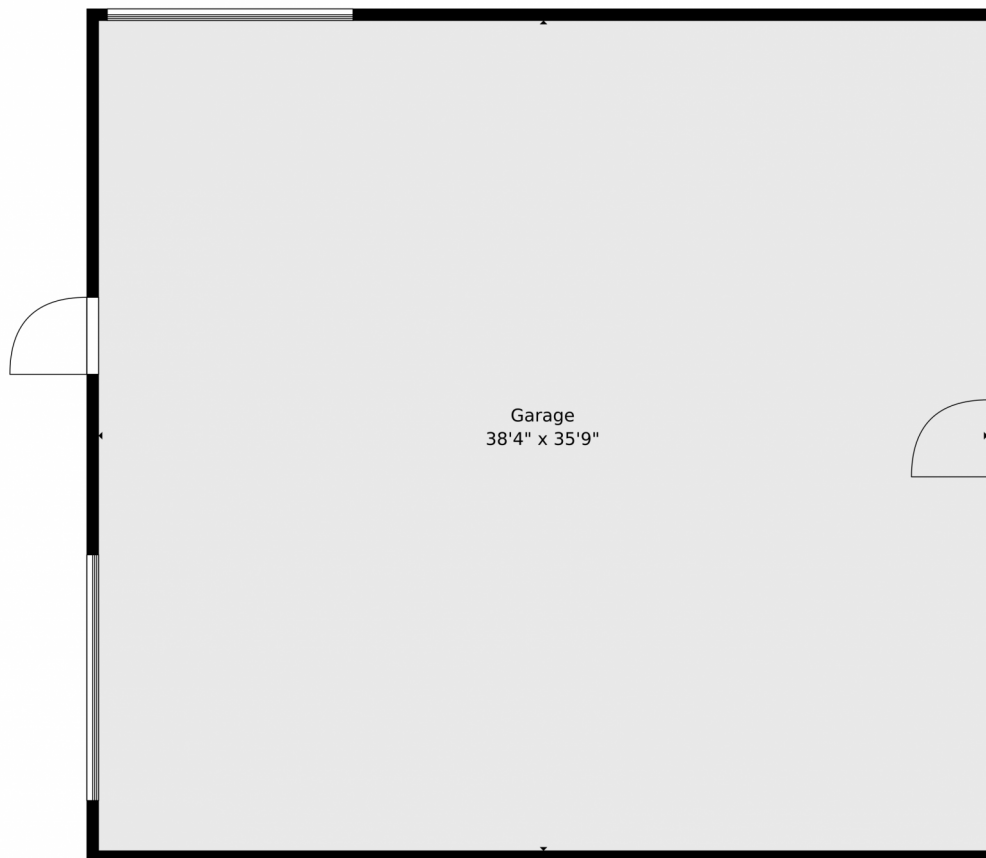
**Tatyana Sturm**  
720-350-5909  
tatyana@exitrealtydtc.com  
<https://thestorckteam.com>



Scan code  
for more  
property  
details



## 228 Birch Avenue, Castle Rock, CO 80104 – Detached Garage



TOTAL: 1562 sq. ft.  
BELOW GROUND: 731 sq. ft, FLOOR 2: 831 sq. ft, FLOOR 3: 0 sq. ft  
EXCLUDED AREAS: GARAGE: 1837 sq. ft, DECK: 125 sq. ft, PORCH: 18 sq. ft  
Floor Plan Created By V1photos.com, Measurements Deamed Highly Reliable But Not Guaranteed.



Disclaimer: Sizes and Dimensions are Approximate, Actual May Vary.



**Tatyana Sturm**  
720-350-5909  
tatyana@exitrealtydtc.com  
<https://thestorckteam.com>

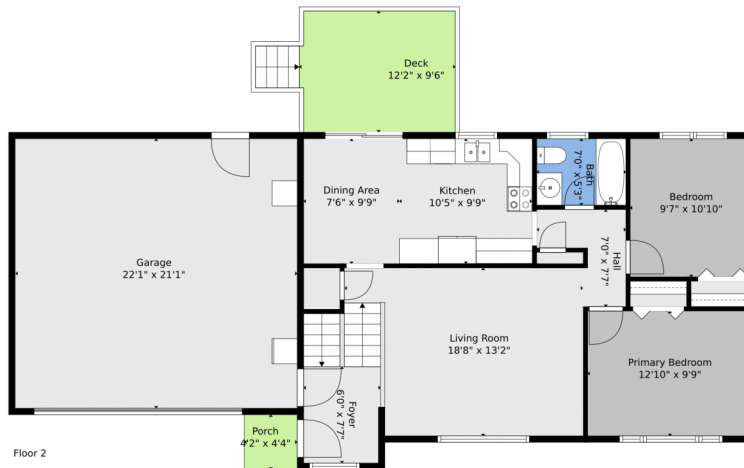


Scan code  
for more  
property  
details





# 228 Birch Avenue, Castle Rock, CO 80104 – All Levels



Floor 2



Floor 3



Floor 1

TOTAL: 1562 sq. ft.  
BELOW GROUND: 731 sq. ft, FLOOR 2: 831 sq. ft, FLOOR 3: 0 sq. ft  
EXCLUDED AREAS: GARAGE: 1837 sq. ft, DECK: 125 sq. ft, PORCH: 18 sq. ft  
Floor Plan Created By V1photos.com, Measurements Deamed Highly Reliable But Not Guaranteed.



Disclaimer: Sizes and Dimensions are Approximate, Actual May Vary.



**Tatyana Sturm**  
720-350-5909  
tatyana@exitrealttydtc.com  
<https://thestorckteam.com>



Scan code  
for more  
property  
details

