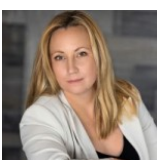




 Single Family  2482 SQFT  4 Beds  4 Baths  2 Car  0.22 Acre

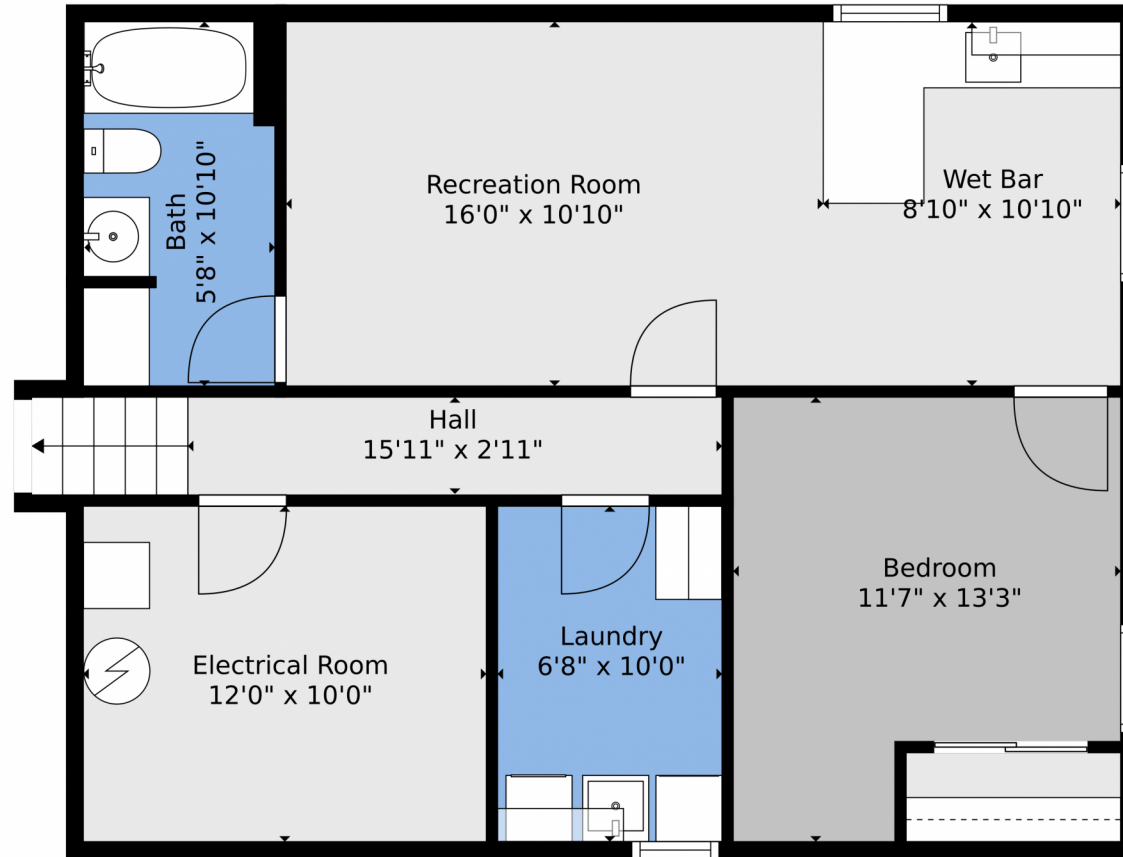
## PROPERTY DETAILS

This stunning mid-century home in Ridgeview Hills combines comfort and style. Located in a quiet cul-de-sac, it's close to top schools, parks, shopping, and major highways for easy commuting around Denver. The home features a spacious floor plan on a beautifully landscaped oversized lot, perfect for summer entertaining. Enjoy multiple outdoor decks, mature trees, and a garden shed for a serene retreat. Inside, a cozy sunroom with a water wall adds charm. The upper level includes an oversized primary suite and a second bedroom with a full bath, while a private guest ensuite is below. The kitchen opens to a family room with a fireplace, complemented by a light-filled living and dining area. The finished basement offers additional living space, ideal for guests or rental. With custom woodworking and stained glass details, this home is a true gem!



**Lauren Weiss**  
720-485-1500  
lauren@laurenweiss.com  
<https://www.laurenweiss.com>





TOTAL: 2339 sq. ft  
BELOW GROUND: 641 sq. ft, FLOOR 2: 317 sq. ft, FLOOR 3: 781 sq. ft, FLOOR 4: 600 sq. ft  
EXCLUDED AREAS: ELECTRICAL ROOM: 120 sq. ft, GARAGE: 400 sq. ft, SCREENED PORCH: 201 sq. ft,  
BAY WINDOW: 2 sq. ft, FIREPLACE: 15 sq. ft

Floor Plan Created By V1photos.com. Measurements Deamed Highly Reliable But Not Guaranteed.

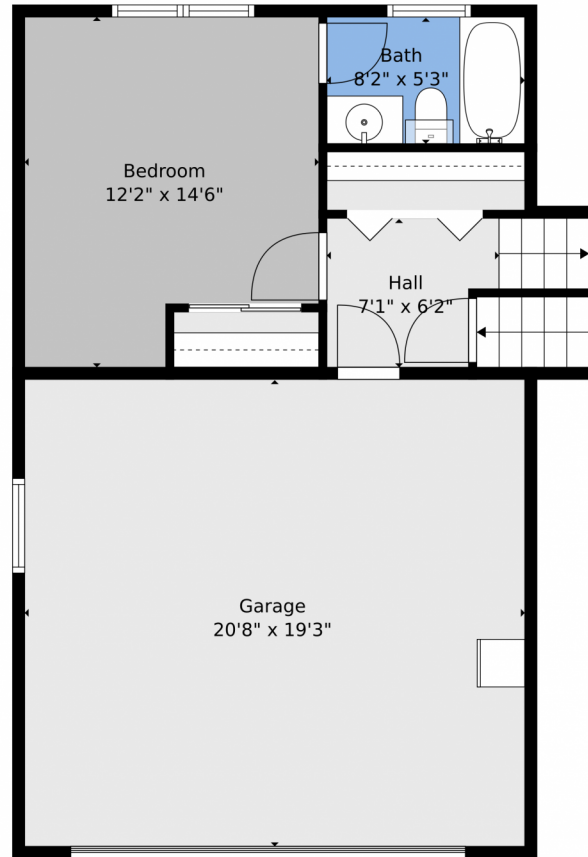


Disclaimer: Sizes and Dimensions are Approximate, Actual May Vary.



**Lauren Weiss**  
720-485-1500  
lauren@laurenweiss.com  
<https://www.laurenweiss.com>





TOTAL: 2339 sq. ft  
BELOW GROUND: 641 sq. ft, FLOOR 2: 317 sq. ft, FLOOR 3: 781 sq. ft, FLOOR 4: 600 sq. ft  
EXCLUDED AREAS: ELECTRICAL ROOM: 120 sq. ft, GARAGE: 400 sq. ft, SCREENED PORCH: 201 sq. ft,  
BAY WINDOW: 2 sq. ft, FIREPLACE: 15 sq. ft

Floor Plan Created By V1photos.com. Measurements Deamed Highly Reliable But Not Guaranteed.

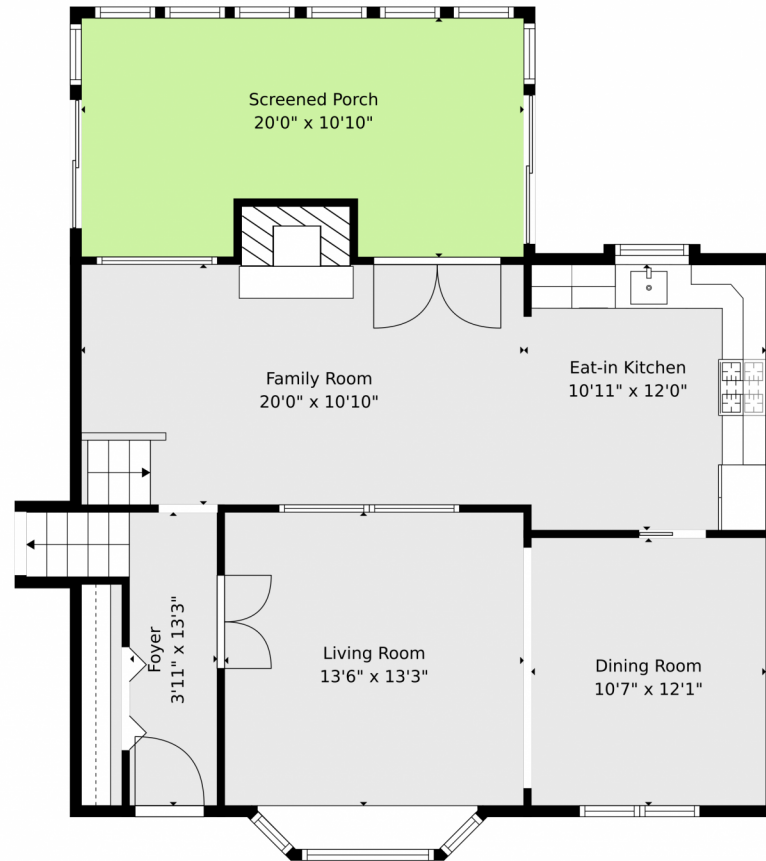


Disclaimer: Sizes and Dimensions are Approximate, Actual May Vary.



**Lauren Weiss**  
720-485-1500  
lauren@laurenweiss.com  
<https://www.laurenweiss.com>



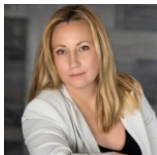


TOTAL: 2339 sq. ft  
BELOW GROUND: 641 sq. ft, FLOOR 2: 317 sq. ft, FLOOR 3: 781 sq. ft, FLOOR 4: 600 sq. ft  
EXCLUDED AREAS: ELECTRICAL ROOM: 120 sq. ft, GARAGE: 400 sq. ft, SCREENED PORCH: 201 sq. ft,  
BAY WINDOW: 2 sq. ft, FIREPLACE: 15 sq. ft

Floor Plan Created By V1photos.com, Measurements Deamed Highly Reliable But Not Guaranteed.

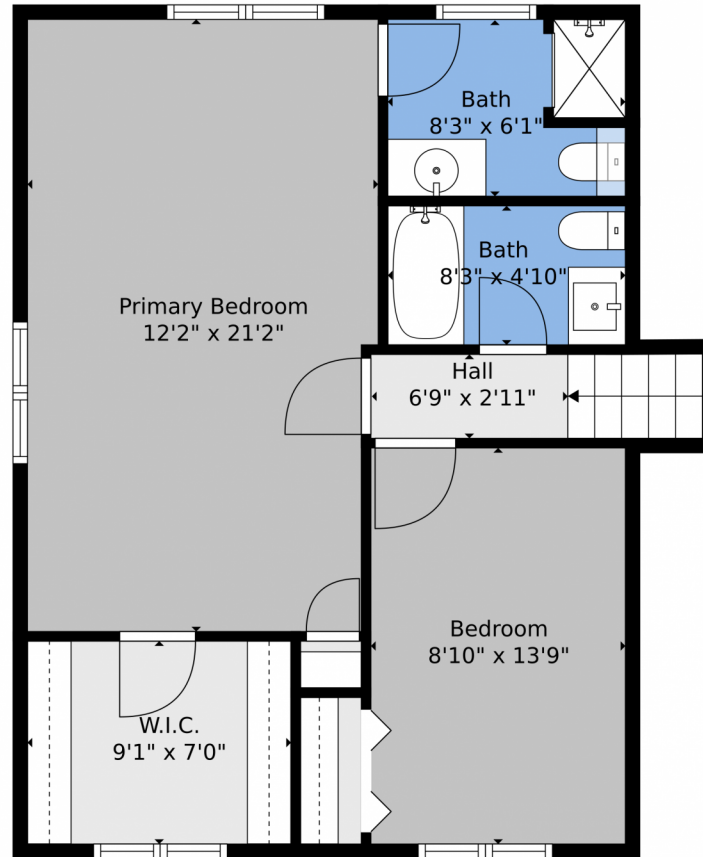


Disclaimer: Sizes and Dimensions are Approximate, Actual May Vary.



**Lauren Weiss**  
720-485-1500  
lauren@laurenweiss.com  
<https://www.laurenweiss.com>





TOTAL: 2339 sq. ft  
BELOW GROUND: 641 sq. ft, FLOOR 2: 317 sq. ft, FLOOR 3: 781 sq. ft, FLOOR 4: 600 sq. ft  
EXCLUDED AREAS: ELECTRICAL ROOM: 120 sq. ft, GARAGE: 400 sq. ft, SCREENED PORCH: 201 sq. ft,  
BAY WINDOW: 2 sq. ft, FIREPLACE: 15 sq. ft

Floor Plan Created By V1photos.com. Measurements Deamed Highly Reliable But Not Guaranteed.



Disclaimer: Sizes and Dimensions are Approximate, Actual May Vary.



**Lauren Weiss**  
720-485-1500  
lauren@laurenweiss.com  
<https://www.laurenweiss.com>



# 7148 S Dahlia Court, Centennial, CO 80122 – floorplan\_all\_0



TOTAL: 2339 sq. ft  
BELOW GROUND: 641 sq. ft, FLOOR 2: 317 sq. ft, FLOOR 3: 781 sq. ft, FLOOR 4: 600 sq. ft  
EXCLUDED AREAS: ELECTRICAL ROOM: 120 sq. ft, GARAGE: 400 sq. ft, SCREENED PORCH: 201 sq. ft,  
BAY WINDOW: 2 sq. ft, FIREPLACE: 15 sq. ft

Floor Plan Created By V1photos.com. Measurements Deamed Highly Reliable But Not Guaranteed.



Disclaimer: Sizes and Dimensions are Approximate, Actual May Vary.



**Lauren Weiss**  
720-485-1500  
lauren@laurenweiss.com  
<https://www.laurenweiss.com>



Scan code  
for more  
property  
details

