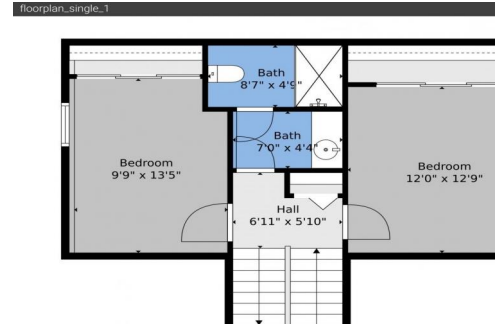




23626 Genesee Village Road  
Golden, CO 80401  
COMMUNITY: Village at Genesee

PRICE \$750,000



Single Family



2200 SQFT



3 Beds



2 Baths



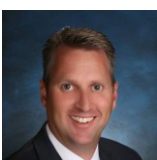
2 Car



0.06 Acre

## PROPERTY DETAILS

Escape the city's hustle to the serene Genesee foothills, where stunning mountain views and wildlife await. This updated three-bedroom, two-bath home in Genesee Village showcases pride of ownership with upgrades like slab granite counters, stainless steel appliances, and maple flooring. It includes a fully paid solar system and hot water heat with a heat pump for comfort. The bright living space features vaulted ceilings and a pellet fireplace for cozy days. An upper den can serve as an open loft or private office. The low-maintenance yard backs to open space and a wildlife trail, perfect for enjoying Colorado's nature with elk and deer nearby. Genesee offers easy access to Denver and ski areas, making it ideal for work and play.



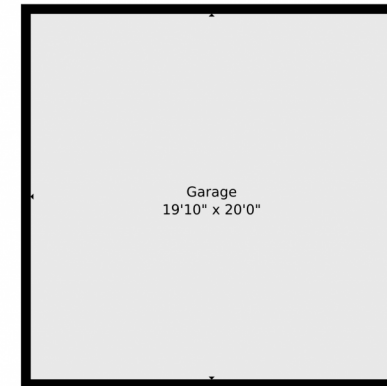
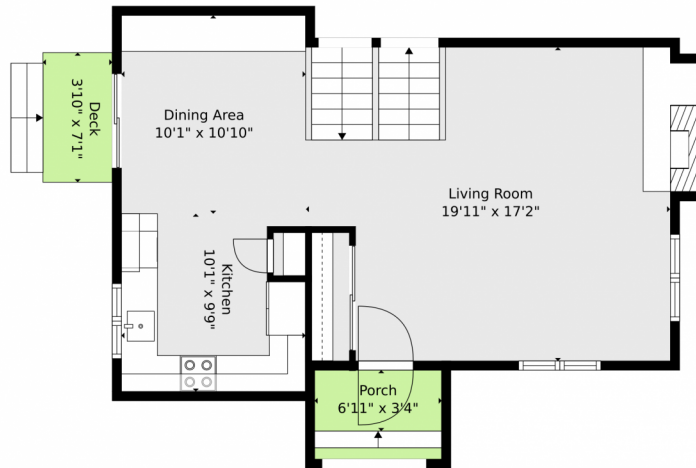
Greg Dach  
303-525-9006  
gregdach@remax.net



Scan code  
for more  
property  
details



# 23626 Genesee Village Road, Golden, CO 80401 — Main

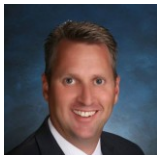


TOTAL: 1982 sq. ft  
BELOW GROUND: 378 sq. ft, FLOOR 2: 519 sq. ft, FLOOR 3: 560 sq. ft, FLOOR 4: 525 sq. ft  
EXCLUDED AREAS: UTILITY: 140 sq. ft, GARAGE: 397 sq. ft, PORCH: 34 sq. ft,  
DECK: 27 sq. ft

Floor Plan Created By V1photos.com, Measurements Deamed Highly Reliable But Not Guaranteed.



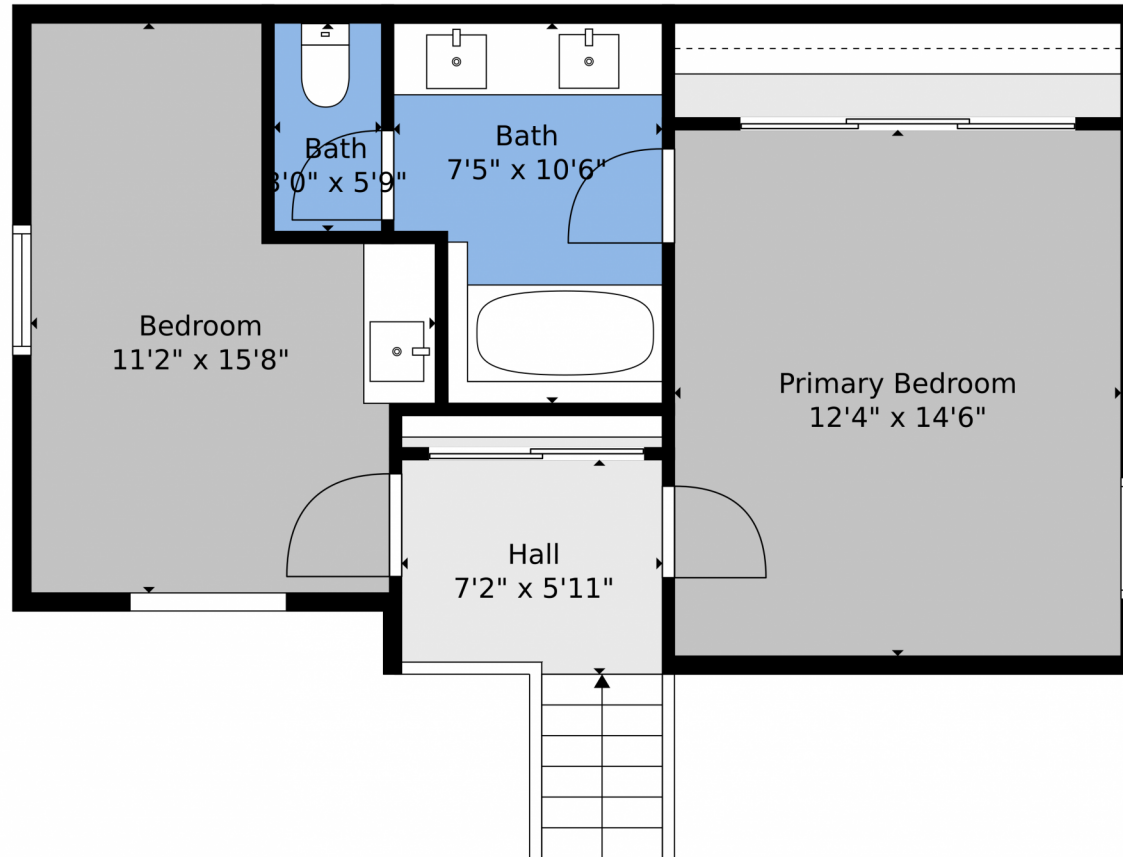
Disclaimer: Sizes and Dimensions are Approximate, Actual May Vary.



**Greg Dach**  
303-525-9006  
gregdach@remax.net



## 23626 Genesee Village Road, Golden, CO 80401 — 2nd Level



TOTAL: 1982 sq. ft.  
BELOW GROUND: 378 sq. ft, FLOOR 2: 519 sq. ft, FLOOR 3: 560 sq. ft, FLOOR 4: 525 sq. ft  
EXCLUDED AREAS: UTILITY: 140 sq. ft, GARAGE: 397 sq. ft, PORCH: 34 sq. ft,  
DECK: 27 sq. ft

Floor Plan Created By V1photos.com, Measurements Deamed Highly Reliable But Not Guaranteed.



Disclaimer: Sizes and Dimensions are Approximate, Actual May Vary.

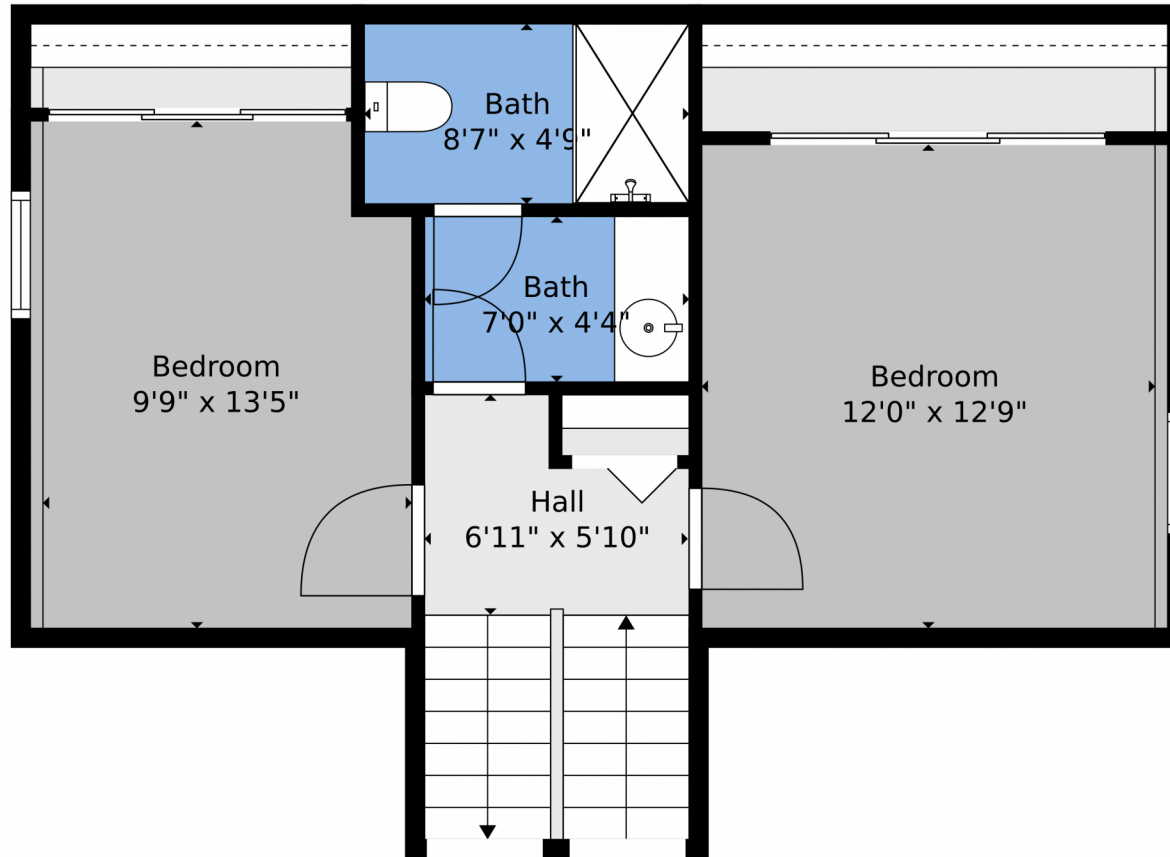


**Greg Dach**  
303-525-9006  
gregdach@remax.net





## 23626 Genesee Village Road, Golden, CO 80401 — Lower Level



TOTAL: 1982 sq. ft.  
BELOW GROUND: 378 sq. ft, FLOOR 2: 519 sq. ft, FLOOR 3: 560 sq. ft, FLOOR 4: 525 sq. ft  
EXCLUDED AREAS: UTILITY: 140 sq. ft, GARAGE: 397 sq. ft, PORCH: 34 sq. ft,  
DECK: 27 sq. ft

Floor Plan Created By V1photos.com, Measurements Deamed Highly Reliable But Not Guaranteed.

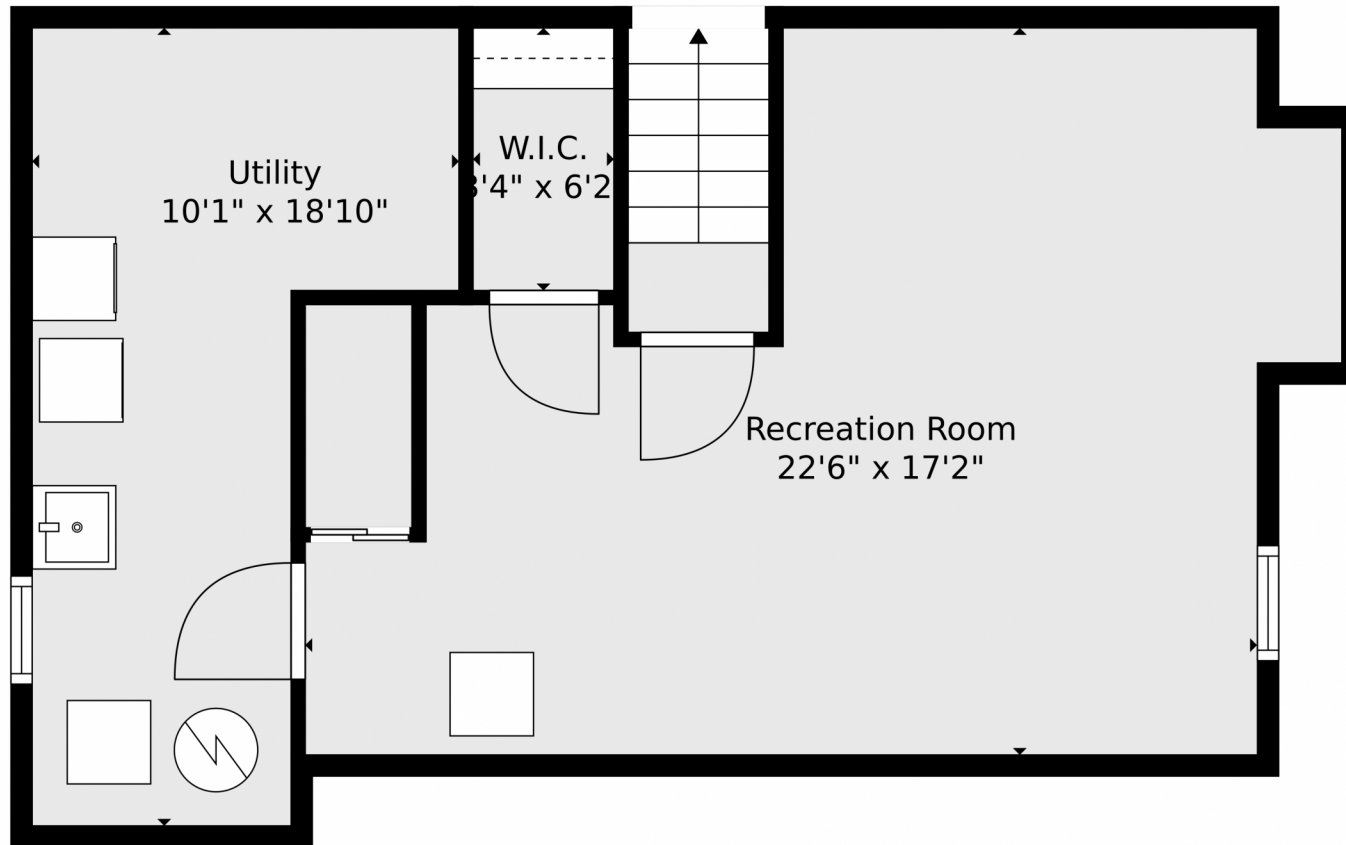
Disclaimer: Sizes and Dimensions are Approximate, Actual May Vary.



**Greg Dach**  
303-525-9006  
gregdach@remax.net



23626 Genesee Village Road, Golden, CO 80401 — Basement

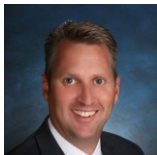


TOTAL: 1982 sq. ft  
BELOW GROUND: 378 sq. ft, FLOOR 2: 519 sq. ft, FLOOR 3: 560 sq. ft, FLOOR 4: 525 sq. ft  
EXCLUDED AREAS: UTILITY: 140 sq. ft, GARAGE: 397 sq. ft, PORCH: 34 sq. ft,  
DECK: 27 sq. ft

Floor Plan Created By V1photos.com, Measurements Deamed Highly Reliable But Not Guaranteed.



Disclaimer: Sizes and Dimensions are Approximate, Actual May Vary.



**Greg Dach**  
303-525-9006  
gregdach@remax.net



Scan code  
for more  
property  
details



# 23626 Genesee Village Road, Golden, CO 80401 — All Levels



TOTAL: 1982 sq. ft.  
BELOW GROUND: 378 sq. ft, FLOOR 2: 519 sq. ft, FLOOR 3: 560 sq. ft, FLOOR 4: 525 sq. ft  
EXCLUDED AREAS: UTILITY: 140 sq. ft, GARAGE: 397 sq. ft, PORCH: 34 sq. ft,  
DECK: 27 sq. ft

Floor Plan Created By V1photos.com, Measurements Deamed Highly Reliable But Not Guaranteed.



Disclaimer: Sizes and Dimensions are Approximate, Actual May Vary.



**Greg Dach**  
303-525-9006  
gregdach@remax.net



Scan code  
for more  
property  
details

