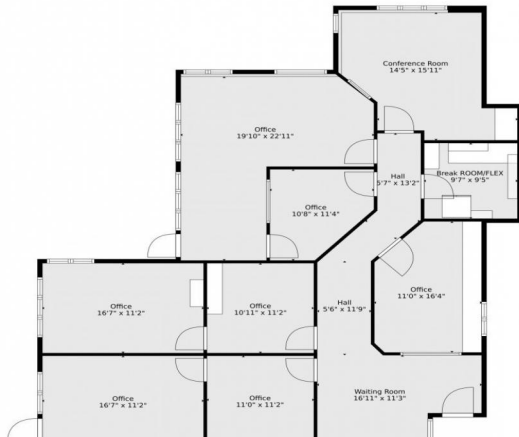


floorplan_single_0



Commercial



1918 SQFT

PROPERTY DETAILS

Discover your ideal Evergreen workspace in this spacious office condo, perfectly situated in central Evergreen. Offering a versatile layout designed for productivity and bathed in natural light from expansive windows, this well-appointed space features multiple private offices, a conference room, and a break room space with refrigerator. Enjoy refreshing breaks or impromptu meetings on your private patio, surrounded by the serene beauty of the mountains. The rustic charm of log and timber construction blends seamlessly with the mountain landscape, creating a unique and inviting atmosphere. With ample paved parking and HOA-covered utilities, common area janitorial, and snow removal, your focus remains on your business. This property's central Evergreen location and flexible layout make it an ideal choice for both owner-occupiers and investors seeking a solid commercial asset. Elevate your business with a workspace that truly reflects the beauty and spirit of Evergreen.

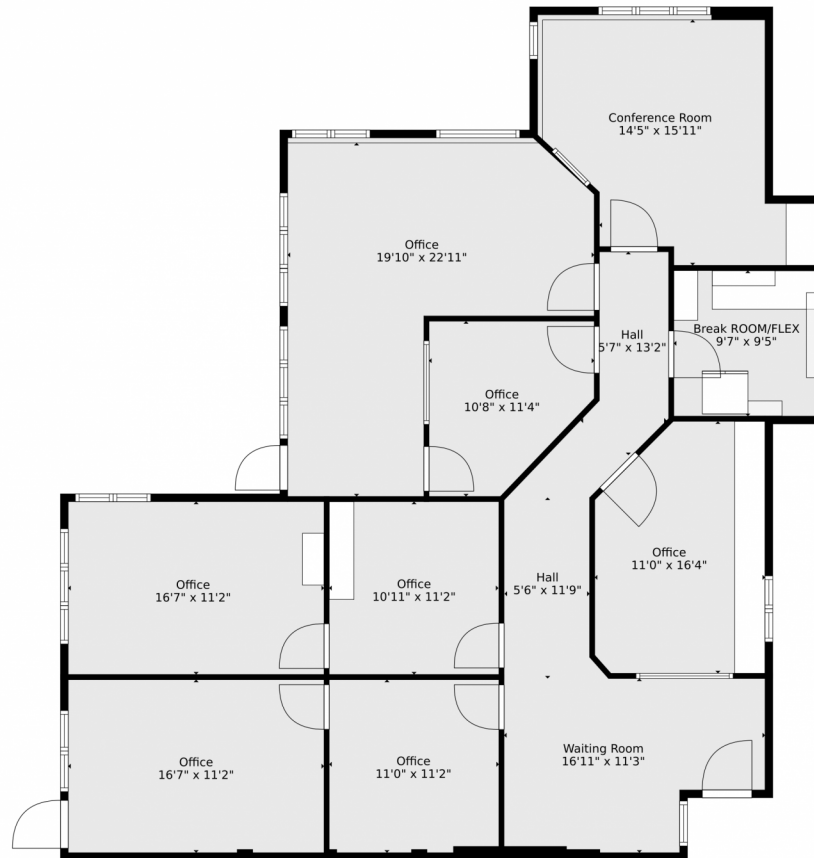


Pandora & John Erlandson
 303-888-6298
pandora@pandorajohnproperties.com
<https://www.pandorajohnproperties.com>



Scan code
 for more
 property
 details





TOTAL: 1899 sq. ft
FLOOR 1: 1899 sq. ft

Floor Plan Created By V1photos.com, Measurements Deamed Highly Reliable But Not Guaranteed.



Disclaimer: Sizes and Dimensions are Approximate, Actual May Vary.



Pandora & John Erlandson

303-888-6298

pandora@pandorajohnproperties.com

<https://www.pandorajohnproperties.com>



Scan code
for more
property
details

