



3635 Levy Park Drive  
 Colorado Springs, CO 80922  
**COMMUNITY:** Greenways at Sand Creek

MLS # 1205285  
 PRICE \$425,000

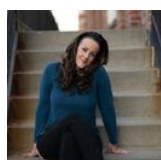
Welcome Home!



Townhouse 1576 SQFT 3 Beds 2/1 Baths 2 Car 0.05 Acre

## PROPERTY DETAILS

Welcome Home to Greenways at Sand Creek! This beautiful Classic Home builder former model townhome has everything you need and more, including captivating views of Pike's Peak. Upon entering you're overcome with a feeling of home. The living room feels welcoming and cozy. The chef's kitchen features beautiful white shaker cabinets, granite countertops with an island that allows an eating space in the kitchen. The expansive pantry allows for lots of storage space. Upstairs you'll find an amazing primary retreat with its own spa-like en-suite, perfect for relaxing after a long day. There are two additional generous sized bedrooms and one additional full bathroom upstairs, and a cute half bath on the main level. This home also comes with an oversized two car attached garage. This home is located steps away from a lake, with a beautiful park area where you can relax and enjoy the beautiful Colorado scenery and live concerts in the summer. This gem won't last long!



**Kimberly Regen**  
 720-320-0733  
 kim@blueheartrealty.us

