

Single Family



2794 SQFT



10+ Beds



2 Car



0.21 Acre



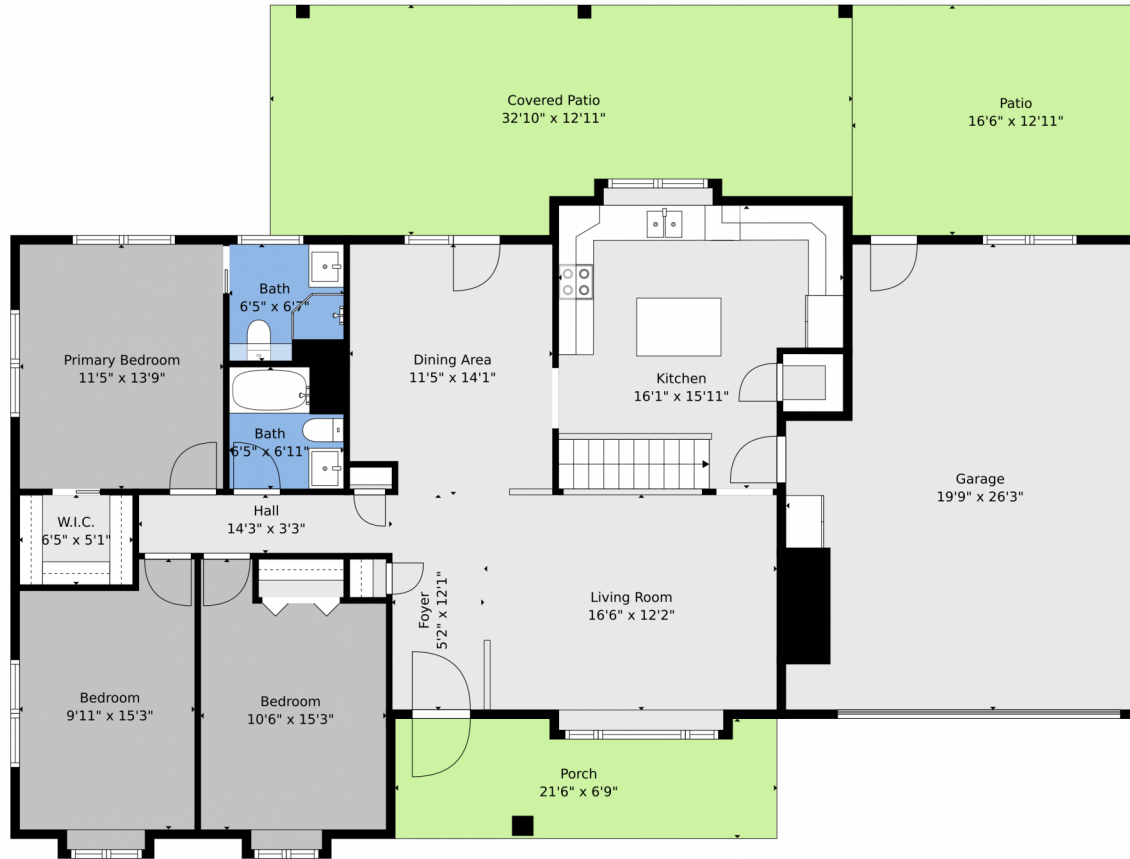
Alexis Foster
970-310-6999
afoster@thegroupinc.com



Scan code
for more
property
details



3610 Columbia Drive, Longmont, CO 80503 – Main



TOTAL: 2343 sq. ft
BELOW GROUND: 969 sq. ft, FLOOR 2: 1374 sq. ft
EXCLUDED AREAS: UTILITY: 200 sq. ft, FIREPLACE: 17 sq. ft, GARAGE: 465 sq. ft,
PORCH: 134 sq. ft, COVERED PATIO: 381 sq. ft, PATIO: 215 sq. ft

Floor Plan Created By V1photos.com, Measurements Deamed Highly Reliable But Not Guaranteed.



Disclaimer: Sizes and Dimensions are Approximate, Actual May Vary.



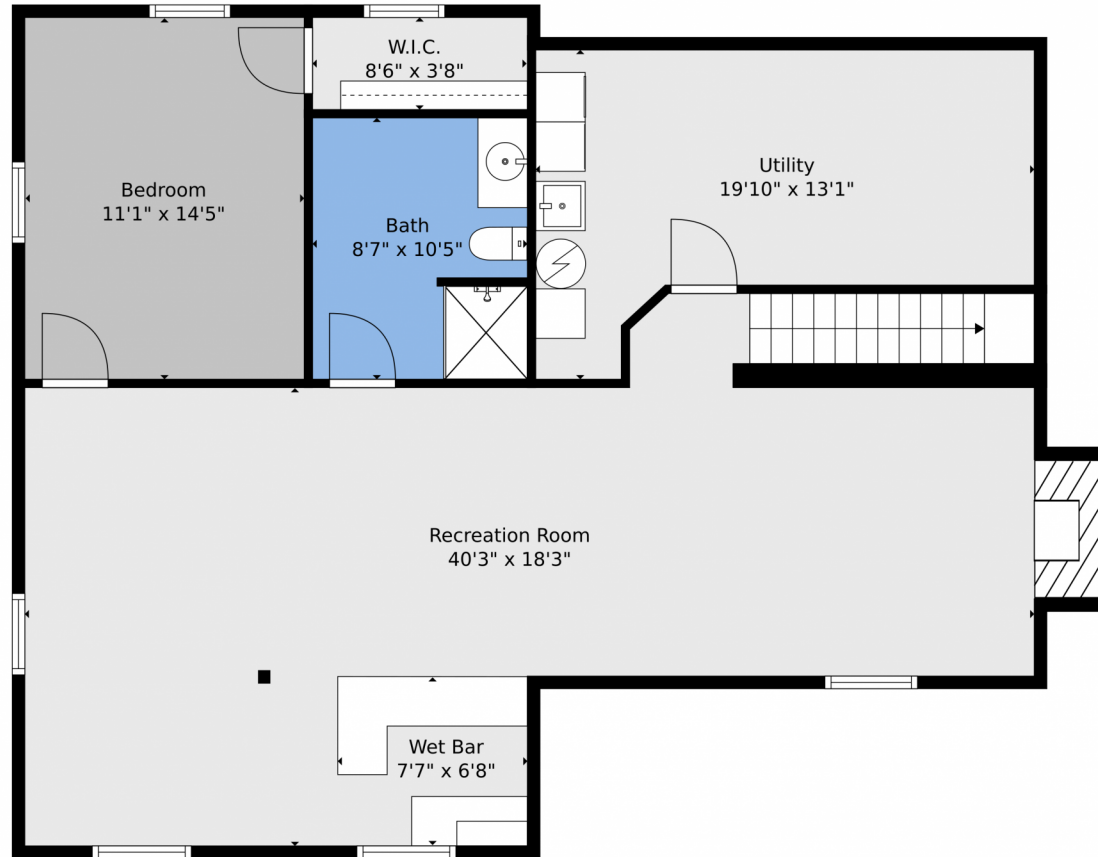
Alexis Foster
970-310-6999
afoster@thegroupinc.com



Scan code
for more
property
details



3610 Columbia Drive, Longmont, CO 80503 – Basement



TOTAL: 2343 sq. ft
BELOW GROUND: 969 sq. ft, FLOOR 2: 1374 sq. ft
EXCLUDED AREAS: UTILITY: 200 sq. ft, FIREPLACE: 17 sq. ft, GARAGE: 465 sq. ft,
PORCH: 134 sq. ft, COVERED PATIO: 381 sq. ft, PATIO: 215 sq. ft
Floor Plan Created By V1photos.com, Measurements Deamed Highly Reliable But Not Guaranteed.



Disclaimer: Sizes and Dimensions are Approximate, Actual May Vary.



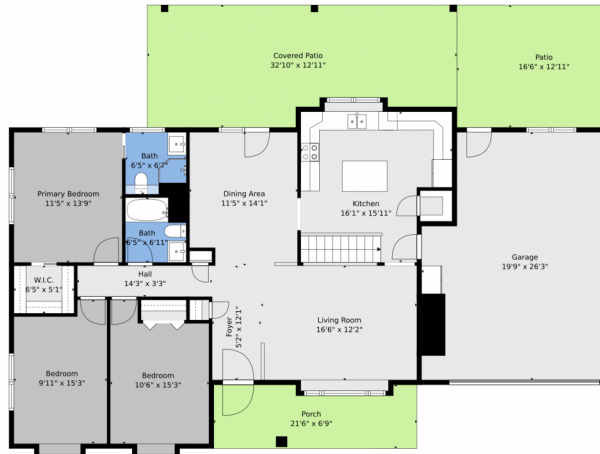
Alexis Foster
970-310-6999
afoster@thegroupinc.com

Scan code
for more
property
details

The QR code is square with a green border. To its left is a small icon of a smartphone displaying a QR code.



3610 Columbia Drive, Longmont, CO 80503 – All Levels



Floor 2



Floor 1

TOTAL: 2343 sq. ft
BELOW GROUND: 969 sq. ft, FLOOR 2: 1374 sq. ft
EXCLUDED AREAS: UTILITY: 200 sq. ft, FIREPLACE: 17 sq. ft, GARAGE: 465 sq. ft,
PORCH: 134 sq. ft, COVERED PATIO: 381 sq. ft, PATIO: 215 sq. ft

Floor Plan Created By V1photos.com, Measurements Deamed Highly Reliable But Not Guaranteed.



Disclaimer: Sizes and Dimensions are Approximate, Actual May Vary.



Alexis Foster
970-310-6999
afoster@thegroupinc.com

