



1555 Charmwood Drive
 Colorado Springs, CO 80906
 COMMUNITY: Cheyenne Meadows

MLS # 2502819
 PRICE \$505,000



Single Family



2700 SQFT



4 Beds



3/1 Baths



2 Car



0.14 Acre



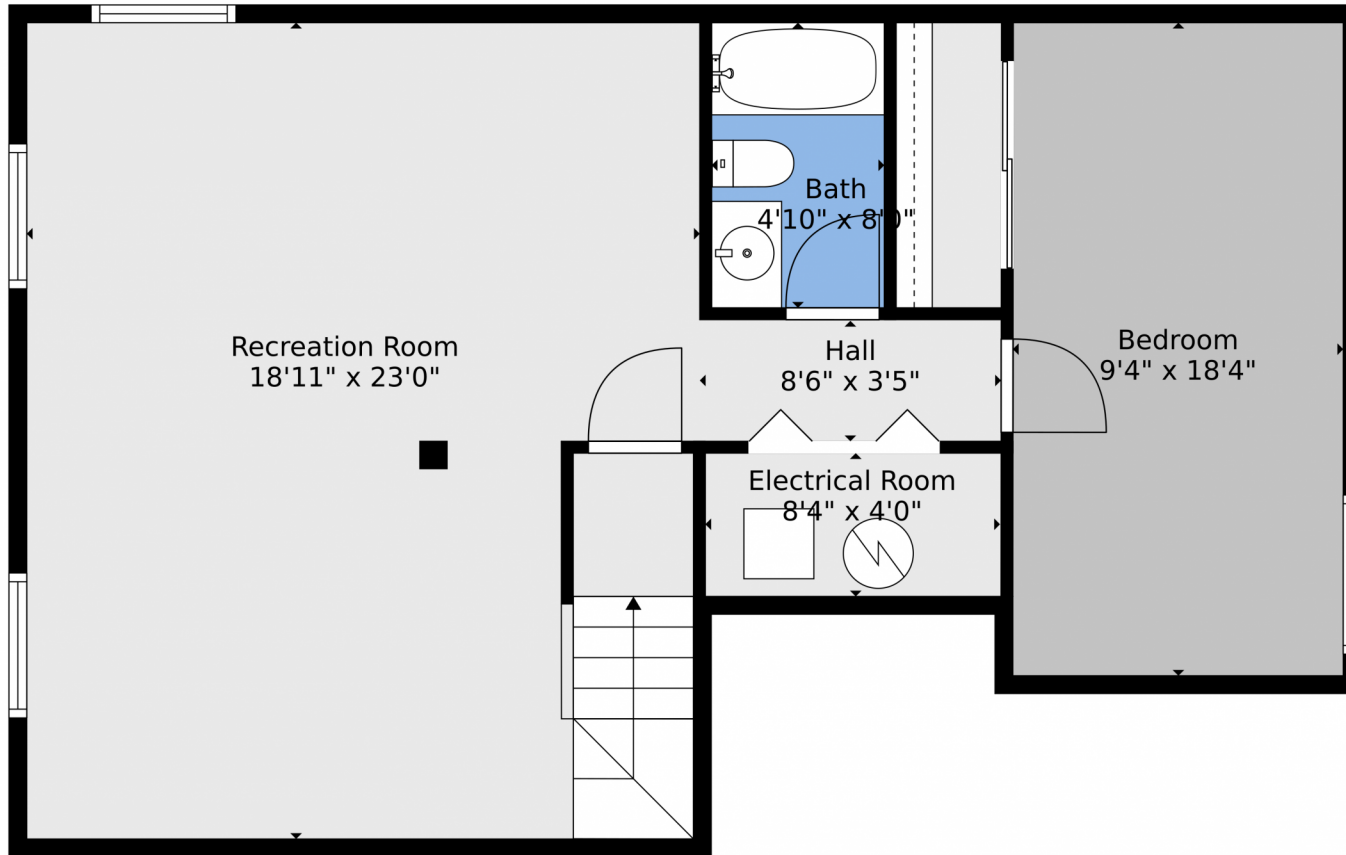
Natalie Renatti
 720-568-0988
 natalierenatti@kw.com
<https://natalierenatti.kw.com/>



Scan code
 for more
 property
 details



1555 Charmwood Drive, Colorado Springs, CO 80906 — Lower Level



TOTAL: 2487 sq. ft
BELOW GROUND: 714 sq. ft, FLOOR 2: 864 sq. ft, FLOOR 3: 909 sq. ft
EXCLUDED AREAS: ELECTRICAL ROOM: 34 sq. ft, GARAGE: 389 sq. ft, PORCH: 109 sq. ft,
DECK: 277 sq. ft, PATIO: 127 sq. ft, FIREPLACE: 12 sq. ft
Floor Plan Created By V1photos.com, Measurements Deamed Highly Reliable But Not Guaranteed.

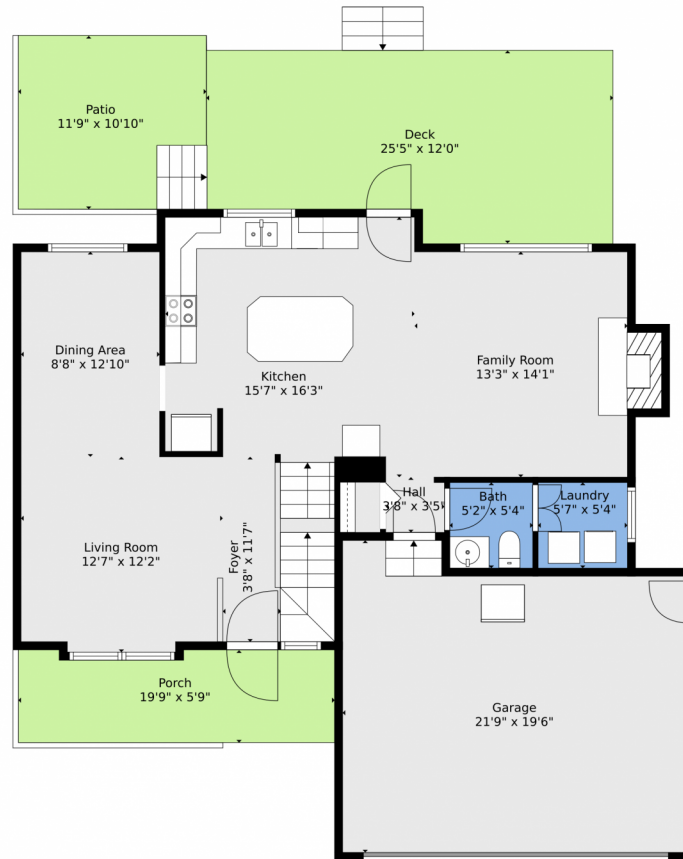
Disclaimer: Sizes and Dimensions are Approximate, Actual May Vary.



Natalie Renatti
720-568-0988
natalierenatti@kw.com
<https://natalierenatti.kw.com/>



1555 Charmwood Drive, Colorado Springs, CO 80906 – Main



TOTAL: 2487 sq. ft
BELOW GROUND: 714 sq. ft, FLOOR 2: 864 sq. ft, FLOOR 3: 909 sq. ft
EXCLUDED AREAS: ELECTRICAL ROOM: 34 sq. ft, GARAGE: 389 sq. ft, PORCH: 109 sq. ft,
DECK: 277 sq. ft, PATIO: 127 sq. ft, FIREPLACE: 12 sq. ft

Floor Plan Created By V1photos.com, Measurements Deamed Highly Reliable But Not Guaranteed.



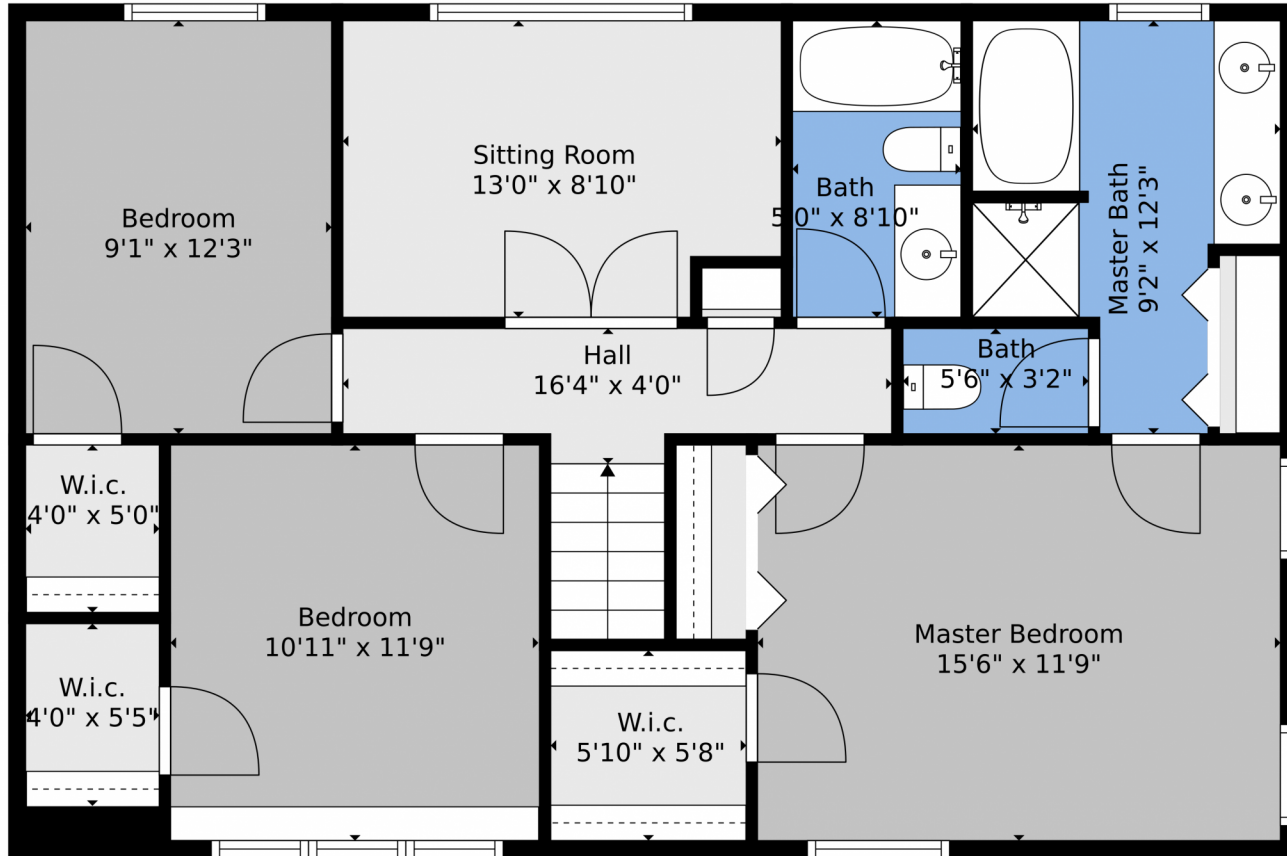
Disclaimer: Sizes and Dimensions are Approximate, Actual May Vary.



Natalie Renatti
720-568-0988
natalierenatti@kw.com
<https://natalierenatti.kw.com/>



1555 Charmwood Drive, Colorado Springs, CO 80906 – 2nd Level



TOTAL: 2487 sq. ft
BELOW GROUND: 714 sq. ft, FLOOR 2: 864 sq. ft, FLOOR 3: 909 sq. ft
EXCLUDED AREAS: ELECTRICAL ROOM: 34 sq. ft, GARAGE: 389 sq. ft, PORCH: 109 sq. ft,
DECK: 277 sq. ft, PATIO: 127 sq. ft, FIREPLACE: 12 sq. ft
Floor Plan Created By V1photos.com, Measurements Deamed Highly Reliable But Not Guaranteed.



Disclaimer: Sizes and Dimensions are Approximate, Actual May Vary.



Natalie Renatti
720-568-0988
natalierenatti@kw.com
<https://natalierenatti.kw.com/>



Scan code
for more
property
details



1555 Charmwood Drive, Colorado Springs, CO 80906 — All Levels



TOTAL: 2487 sq. ft
BELOW GROUND: 714 sq. ft, FLOOR 2: 864 sq. ft, FLOOR 3: 909 sq. ft
EXCLUDED AREAS: ELECTRICAL ROOM: 34 sq. ft, GARAGE: 389 sq. ft, PORCH: 109 sq. ft,
DECK: 277 sq. ft, PATIO: 127 sq. ft, FIREPLACE: 12 sq. ft

Floor Plan Created By V1photos.com, Measurements Deamed Highly Reliable But Not Guaranteed.



Disclaimer: Sizes and Dimensions are Approximate, Actual May Vary.



Natalie Renatti
720-568-0988
natalierenatti@kw.com
<https://natalierenatti.kw.com/>



Scan code
for more
property
details

