



7218 South Iris Court
 Littleton, CO 80128
 COMMUNITY: Stony Creek

MLS # 3428288
 PRICE \$675,000



Single Family



2528 SQFT



4 Beds



2/1 Baths



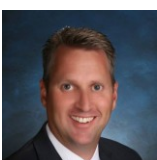
2 Car



0.23 Acre

PROPERTY DETAILS

Stunning 4-Level Home in Stony Creek – Fully Updated & Move-In Ready! This updated home features nearly 2,200 sq. ft., 4 spacious bedrooms, and 2 full baths. Enjoy an oversized 2-car garage and proximity to schools. Cozy up by the two gas fireplaces, and appreciate the new carpet and fresh paint throughout. Energy-efficient Pella windows (2020) and a new roof (2023) provide durability. Inside, find elegant Hunter Douglas plantation shutters and upgraded attic insulation. A new Bosch gas furnace and heat pump ensure comfort year-round. The property boasts a new driveway, stamped concrete porch, and a designer back patio, perfect for entertaining. With a landscaped yard (2022) and new railings (2024), this meticulously maintained home is a must-see!



Greg Dach
 303-525-9006
 gregdach@remax.net



Scan code
 for more
 property
 details





TOTAL: 2059 sq. ft
BELOW GROUND: 0 sq. ft, FLOOR 2: 820 sq. ft, FLOOR 3: 376 sq. ft, FLOOR 4: 863 sq. ft
EXCLUDED AREAS: BASEMENT: 359 sq. ft, GARAGE: 450 sq. ft, FIREPLACE: 18 sq. ft

Floor Plan Created By V1photos.com. Measurements Deamed Highly Reliable But Not Guaranteed.

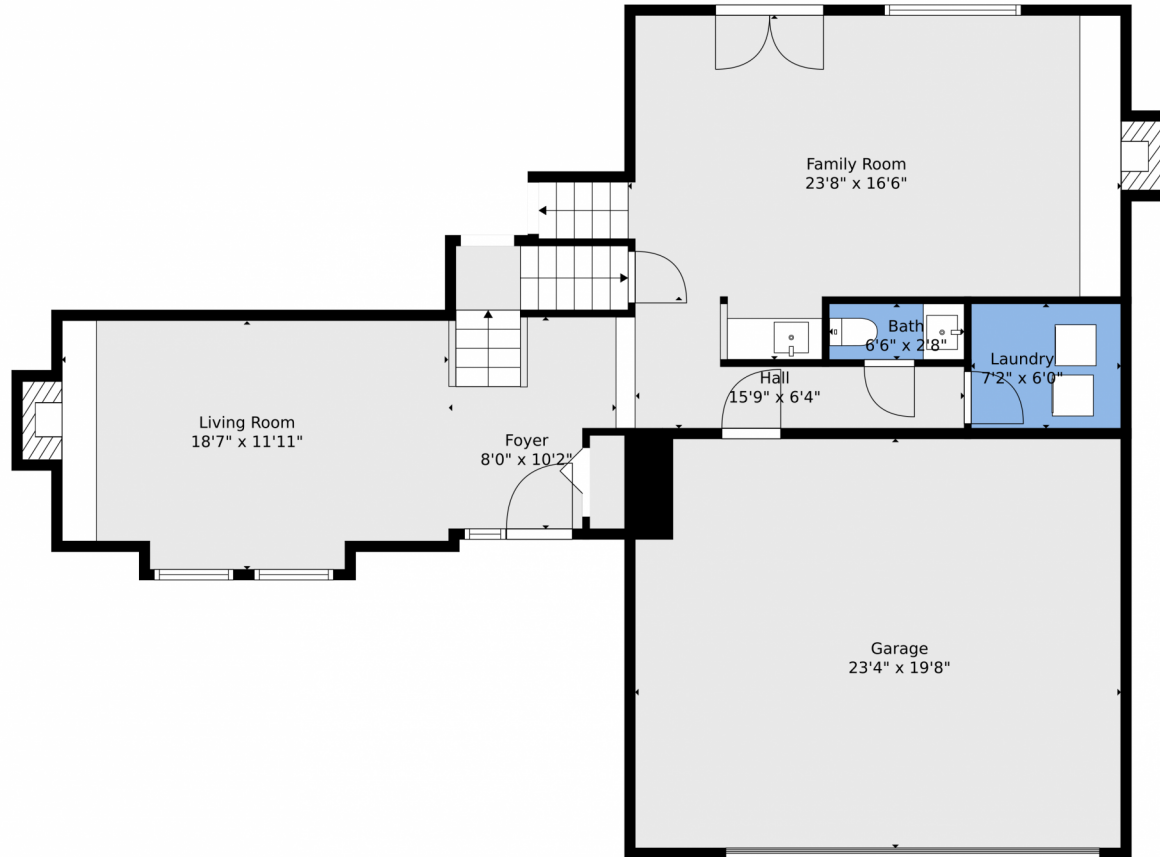


Disclaimer: Sizes and Dimensions are Approximate, Actual May Vary.



Greg Dach
303-525-9006
gregdach@remax.net





TOTAL: 2059 sq. ft
BELOW GROUND: 0 sq. ft, FLOOR 2: 820 sq. ft, FLOOR 3: 376 sq. ft, FLOOR 4: 863 sq. ft
EXCLUDED AREAS: BASEMENT: 359 sq. ft, GARAGE: 450 sq. ft, FIREPLACE: 18 sq. ft
Floor Plan Created By V1photos.com, Measurements Deamed Highly Reliable But Not Guaranteed.

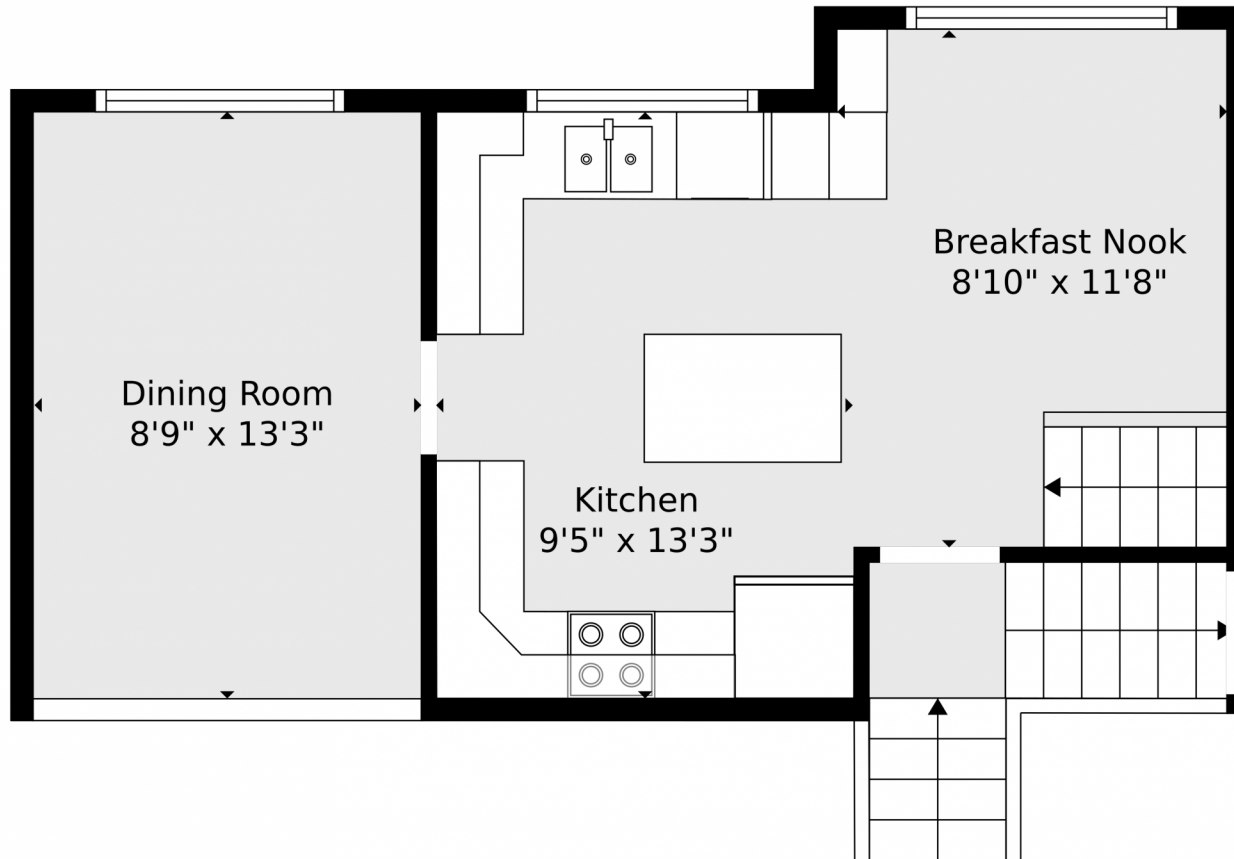
Disclaimer: Sizes and Dimensions are Approximate, Actual May Vary.



Greg Dach
303-525-9006
gregdach@remax.net



Scan code
for more
property
details

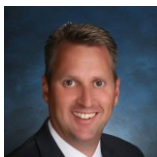


TOTAL: 2059 sq. ft
BELOW GROUND: 0 sq. ft, FLOOR 2: 820 sq. ft, FLOOR 3: 376 sq. ft, FLOOR 4: 863 sq. ft
EXCLUDED AREAS: BASEMENT: 359 sq. ft, GARAGE: 450 sq. ft, FIREPLACE: 18 sq. ft

Floor Plan Created By V1photos.com. Measurements Deamed Highly Reliable But Not Guaranteed.

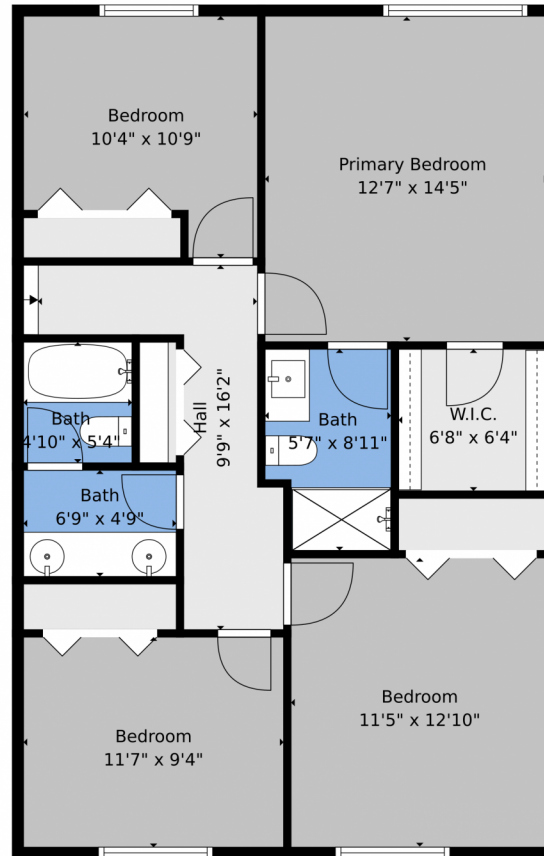


Disclaimer: Sizes and Dimensions are Approximate, Actual May Vary.



Greg Dach
303-525-9006
gregdach@remax.net





TOTAL: 2059 sq. ft
BELOW GROUND: 0 sq. ft, FLOOR 2: 820 sq. ft, FLOOR 3: 376 sq. ft, FLOOR 4: 863 sq. ft
EXCLUDED AREAS: BASEMENT: 359 sq. ft, GARAGE: 450 sq. ft, FIREPLACE: 18 sq. ft
Floor Plan Created By V1photos.com, Measurements Deamed Highly Reliable But Not Guaranteed.



Disclaimer: Sizes and Dimensions are Approximate, Actual May Vary.



Greg Dach
303-525-9006
gregdach@remax.net



7218 South Iris Court, Littleton, CO 80128 – floorplan_all_0



TOTAL: 2059 sq. ft
BELOW GROUND: 0 sq. ft, FLOOR 2: 820 sq. ft, FLOOR 3: 376 sq. ft, FLOOR 4: 863 sq. ft
EXCLUDED AREAS: BASEMENT: 359 sq. ft, GARAGE: 450 sq. ft, FIREPLACE: 18 sq. ft

Floor Plan Created By V1photos.com, Measurements Deamed Highly Reliable But Not Guaranteed.



Disclaimer: Sizes and Dimensions are Approximate, Actual May Vary.



Greg Dach
303-525-9006
gregdach@remax.net

