

Orchard

10912 Memphis Court
Commerce City, CO 80022

COMMUNITY: Reunion

MLS # 8904359

PRICE \$609,000



Single Family



2868 SQFT



4 Beds



3/1 Baths



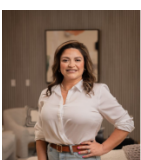
2 Car



0.12 Acre

PROPERTY DETAILS

Welcome to 10912 Memphis Ct! This upgraded 4-bedroom, 3.5-bath home in Commerce City's Reunion Subdivision combines comfort and style. The spacious, light-filled layout is ideal for living and entertaining. The gourmet kitchen features unique upgrades, including a tankless water heater, reverse osmosis system, and solar panels for efficiency. The finished basement includes an additional bedroom, bathroom, mini bar, and game room, perfect for gatherings. Enjoy the extended covered patio for relaxation and a two-car garage for convenience. The vibrant neighborhood offers coffee shop events, top-rated schools, and outdoor amenities like pools and parks. Schedule your tour today to see why this home is your next perfect fit!



Ashleigh Rangel

720-215-8609

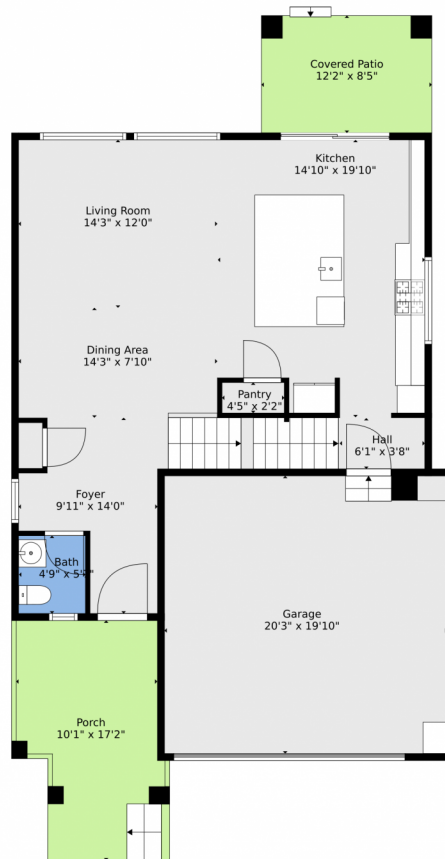
ashleigh.rangel@orchard.com



Scan code
for more
property
details



10912 Memphis Court, Commerce City, CO 80022 — Main

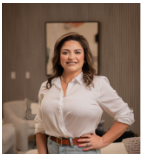


TOTAL: 2576 sq. ft
BELOW GROUND: 700 sq. ft, FLOOR 2: 787 sq. ft, FLOOR 3: 1089 sq. ft
EXCLUDED AREAS: ELECTRICAL ROOM: 20 sq. ft, COVERED PATIO: 102 sq. ft, PORCH: 166 sq. ft,
GARAGE: 402 sq. ft

Floor Plan Created By V1photos.com, Measurements Deamed Highly Reliable But Not Guaranteed.



Disclaimer: Sizes and Dimensions are Approximate, Actual May Vary.



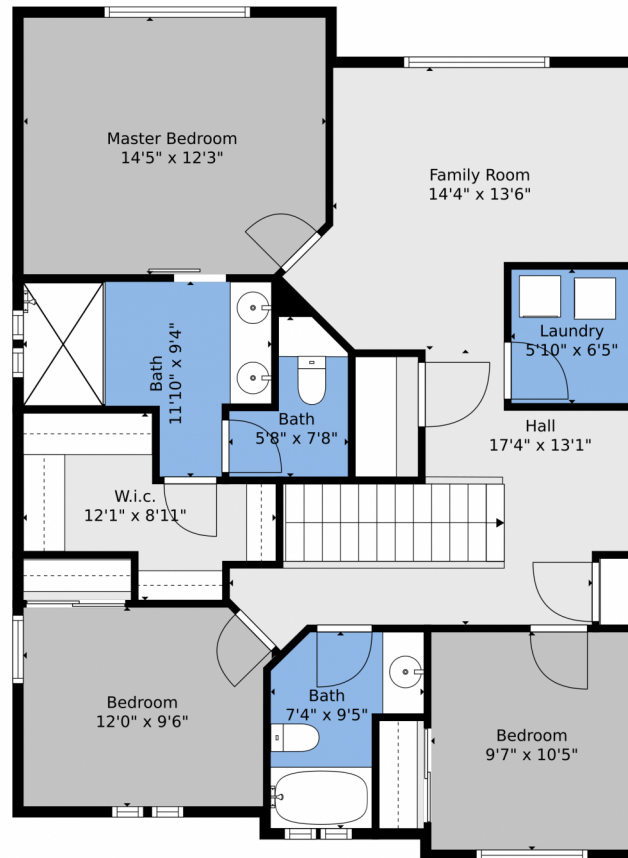
Ashleigh Rangel
720-215-8609
ashleigh.rangel@orchard.com



Scan code
for more
property
details



10912 Memphis Court, Commerce City, CO 80022 — 2nd Level

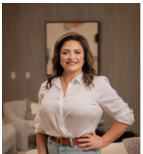


TOTAL: 2576 sq. ft
BELOW GROUND: 700 sq. ft, FLOOR 2: 787 sq. ft, FLOOR 3: 1089 sq. ft
EXCLUDED AREAS: ELECTRICAL ROOM: 20 sq. ft, COVERED PATIO: 102 sq. ft, PORCH: 166 sq. ft,
GARAGE: 402 sq. ft

Floor Plan Created By V1photos.com, Measurements Deamed Highly Reliable But Not Guaranteed.



Disclaimer: Sizes and Dimensions are Approximate, Actual May Vary.



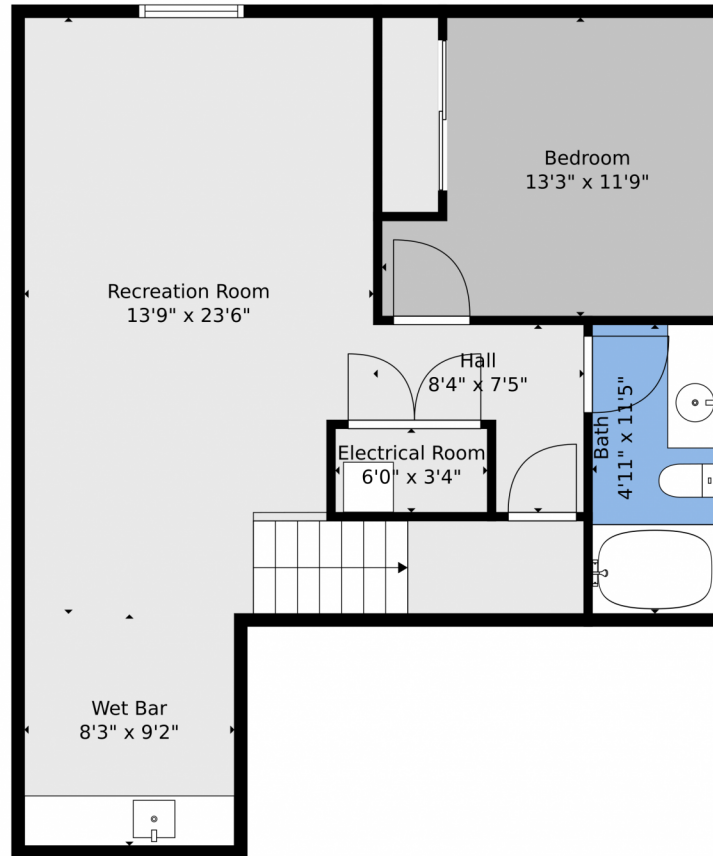
Ashleigh Rangel
720-215-8609
ashleigh.rangel@orchard.com



Scan code
for more
property
details



10912 Memphis Court, Commerce City, CO 80022 — Lower Level

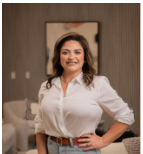


TOTAL: 2576 sq. ft
BELOW GROUND: 700 sq. ft, FLOOR 2: 787 sq. ft, FLOOR 3: 1089 sq. ft
EXCLUDED AREAS: ELECTRICAL ROOM: 20 sq. ft, COVERED PATIO: 102 sq. ft, PORCH: 166 sq. ft, GARAGE: 402 sq. ft

Floor Plan Created By V1photos.com, Measurements Deamed Highly Reliable But Not Guaranteed.



Disclaimer: Sizes and Dimensions are Approximate, Actual May Vary.



Ashleigh Rangel
720-215-8609
ashleigh.rangel@orchard.com



Scan code
for more
property
details

10912 Memphis Court, Commerce City, CO 80022 — All Levels

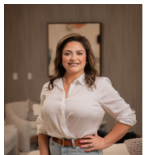


TOTAL: 2576 sq. ft
BELOW GROUND: 700 sq. ft, FLOOR 2: 787 sq. ft, FLOOR 3: 1089 sq. ft
EXCLUDED AREAS: ELECTRICAL ROOM: 20 sq. ft, COVERED PATIO: 102 sq. ft, PORCH: 166 sq. ft,
GARAGE: 402 sq. ft

Floor Plan Created By V1photos.com, Measurements Deamed Highly Reliable But Not Guaranteed.



Disclaimer: Sizes and Dimensions are Approximate, Actual May Vary.



Ashleigh Rangel
720-215-8609
ashleigh.rangel@orchard.com



Scan code
for more
property
details

