



Single Family



3943 SQFT



5 Beds



3/1 Baths



3 Car



0.15 Acre

PROPERTY DETAILS

Attention future homeowners! Discover this stunning 5-bedroom, 3.5-bathroom home in the Founders community of Castle Rock. Spanning 3,500 square feet, it offers ample space for family fun and gatherings, plus a three-car garage for all your needs.

Inside, enjoy a bright open floor plan with a chef's kitchen featuring light stone counters and stainless steel appliances. The living room, perfect for movie nights, boasts a chandelier and fireplace, while the family room's tall ceilings and natural light create a cozy atmosphere.

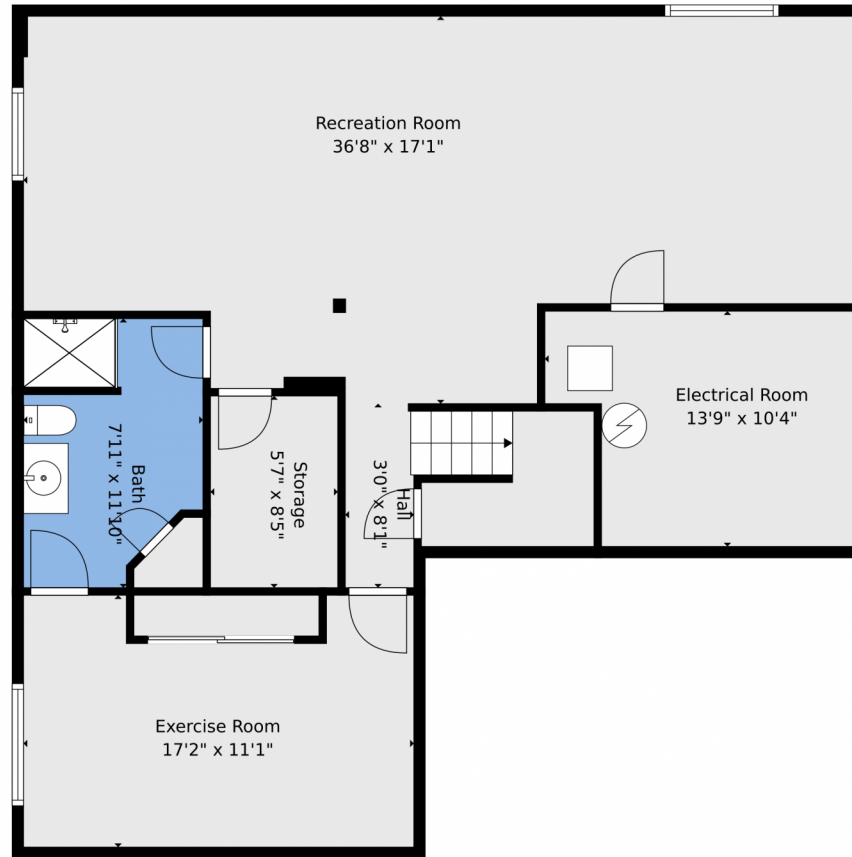
The finished basement is a versatile space ready for your personal touch. Step outside to the deck for outdoor relaxation or barbecues. Living in Founders means easy access to parks, shopping, and all that Castle Rock has to offer. This home is ready for you—let's make it yours!

Jason Woods
303-241-6485
realtorjasonwoods@gmail.com



Scan code
for more
property
details





TOTAL: 3544 sq. ft
BELOW GROUND: 912 sq. ft, FLOOR 2: 1293 sq. ft, FLOOR 3: 1339 sq. ft
EXCLUDED AREAS: ELECTRICAL ROOM: 127 sq. ft, STORAGE: 47 sq. ft, GARAGE: 583 sq. ft,
DECK: 259 sq. ft, PORCH: 68 sq. ft, PATIO: 171 sq. ft,
SHED: 71 sq. ft, OPEN TO BELOW: 292 sq. ft

Floor Plan Created By V1photos.com, Measurements Deamed Highly Reliable But Not Guaranteed.



Disclaimer: Sizes and Dimensions are Approximate, Actual May Vary.

Jason Woods
303-241-6485
realtorjasonwoods@gmail.com



Scan code
for more
property
details



TOTAL: 3544 sq. ft
BELOW GROUND: 912 sq. ft, FLOOR 2: 1293 sq. ft, FLOOR 3: 1339 sq. ft
EXCLUDED AREAS: ELECTRICAL ROOM: 127 sq. ft, STORAGE: 47 sq. ft, GARAGE: 583 sq. ft,
DECK: 259 sq. ft, PORCH: 68 sq. ft, PATIO: 171 sq. ft,
SHED: 71 sq. ft, OPEN TO BELOW: 292 sq. ft

Floor Plan Created By V1photos.com, Measurements Deamed Highly Reliable But Not Guaranteed.



Disclaimer: Sizes and Dimensions are Approximate, Actual May Vary.

Jason Woods
303-241-6485
realtorjasonwoods@gmail.com



Scan code
for more
property
details



TOTAL: 3544 sq. ft
BELOW GROUND: 912 sq. ft, FLOOR 2: 1293 sq. ft, FLOOR 3: 1339 sq. ft
EXCLUDED AREAS: ELECTRICAL ROOM: 127 sq. ft, STORAGE: 47 sq. ft, GARAGE: 583 sq. ft,
DECK: 259 sq. ft, PORCH: 68 sq. ft, PATIO: 171 sq. ft,
SHED: 71 sq. ft, OPEN TO BELOW: 292 sq. ft

Floor Plan Created By V1photos.com, Measurements Deamed Highly Reliable But Not Guaranteed.



Disclaimer: Sizes and Dimensions are Approximate, Actual May Vary.

Jason Woods
303-241-6485
realtorjasonwoods@gmail.com



Scan code
for more
property
details



TOTAL: 3544 sq. ft
 BELOW GROUND: 912 sq. ft, FLOOR 2: 1293 sq. ft, FLOOR 3: 1339 sq. ft
 EXCLUDED AREAS: ELECTRICAL ROOM: 127 sq. ft, STORAGE: 47 sq. ft, GARAGE: 583 sq. ft,
 DECK: 259 sq. ft, PORCH: 68 sq. ft, PATIO: 171 sq. ft,
 SHED: 71 sq. ft, OPEN TO BELOW: 292 sq. ft

Floor Plan Created By V1photos.com, Measurements Deamed Highly Reliable But Not Guaranteed.



Disclaimer: Sizes and Dimensions are Approximate, Actual May Vary.

Jason Woods
 303-241-6485
 realtorjasonwoods@gmail.com

