



2321 S Garfield Street
Denver, CO 80210
COMMUNITY: Observatory Park

MLS # 2814163
PRICE \$5,550,000



2321 South Garfield Street, Denver, CO 80210 - main level



Single Family



7592 SQFT



5 Beds



5/3 Baths



3 Car



0.63 Acre

PROPERTY DETAILS

Discover luxury living in this Observatory Park estate, set on a private 27,463 sq ft lot with a stunning 7,662 sq ft residence. Outdoor amenities include a large terrace, a 16' x 38' saltwater pool, a putting green, and two pergola-covered seating areas with a fire pit and outdoor kitchen. Inside, an elegant entryway leads to a great room with a 16-foot ceiling and a limestone gas fireplace. The designer kitchen features high-end appliances, custom cabinets, and luxury countertops. The main floor primary suite boasts a cozy fireplace and private patio. Upstairs, find three bedrooms with ensuite baths and a loft. The basement includes a media area, gym, and wet bar. This estate offers a luxurious lifestyle with modern amenities and timeless elegance.



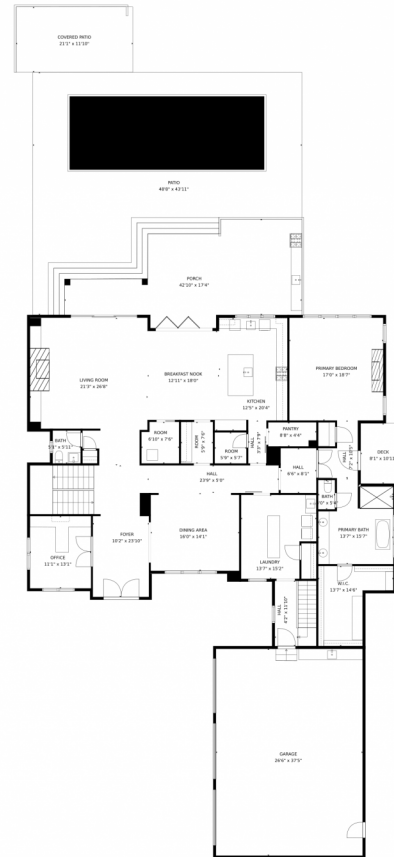
Jaden Combs
303-324-1437
jaden@kentwood.com



Scan code
for more
property
details



2321 S Garfield Street, Denver, CO 80210 — main level



TOTAL: 6648 sq. ft
Below Ground: 2086 sq. ft, FLOOR 2: 3172 sq. ft, FLOOR 3: 1390 sq. ft
EXCLUDED AREAS: STORAGE: 122 sq. ft, ELECTRICAL ROOM: 184 sq. ft, GARAGE: 992 sq. ft,
DECK: 89 sq. ft, COVERED PATIO: 249 sq. ft, PATIO: 1124 sq. ft,
PORCH: 575 sq. ft, OPEN TO BELOW: 148 sq. ft

MEASUREMENTS CALCULATED BY V1Photos.com ARE DEEMED HIGHLY RELIABLE BUT NOT GUARANTEED.



Disclaimer: Sizes and Dimensions are Approximate, Actual May Vary.



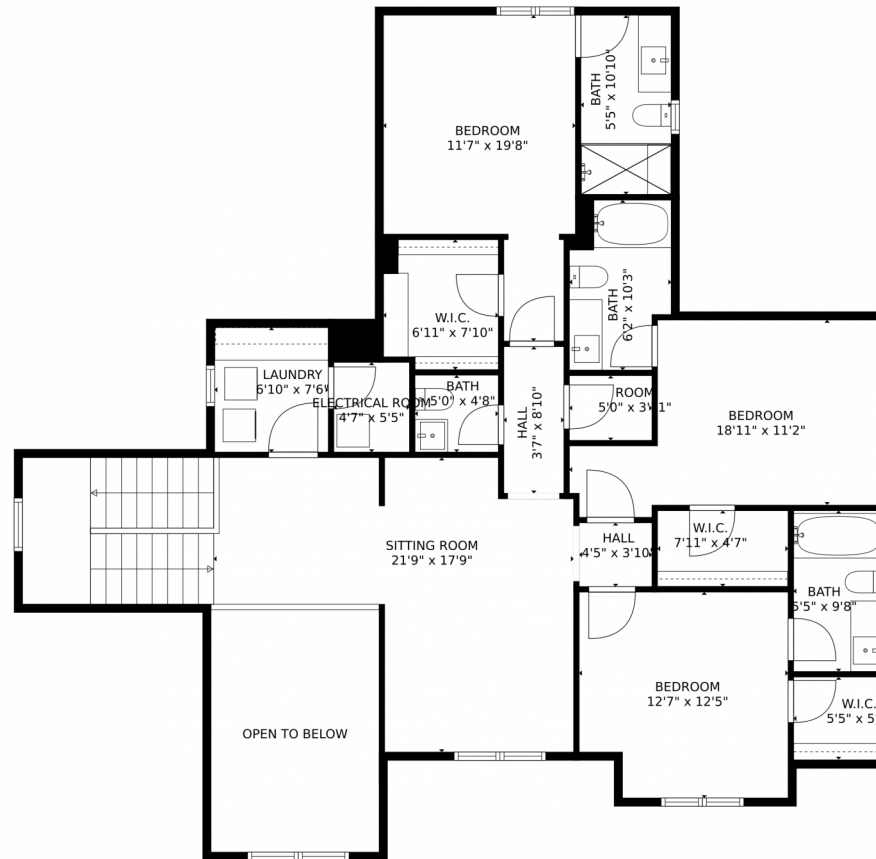
Jaden Combs
303-324-1437
jaden@kentwood.com



Scan code
for more
property
details



2321 S Garfield Street, Denver, CO 80210 — upper level



TOTAL: 6648 sq. ft

Below Ground: 2086 sq. ft, FLOOR 2: 3172 sq. ft, FLOOR 3: 1390 sq. ft
EXCLUDED AREAS: STORAGE: 122 sq. ft, ELECTRICAL ROOM: 184 sq. ft, GARAGE: 992 sq. ft,
DECK: 89 sq. ft, COVERED PATIO: 249 sq. ft, PATIO: 1124 sq. ft,
PORCH: 575 sq. ft, OPEN TO BELOW: 148 sq. ft

MEASUREMENTS CALCULATED BY V1Photos.com ARE DEEMED HIGHLY RELIABLE BUT NOT GUARANTEED.



Disclaimer: Sizes and Dimensions are Approximate, Actual May Vary.



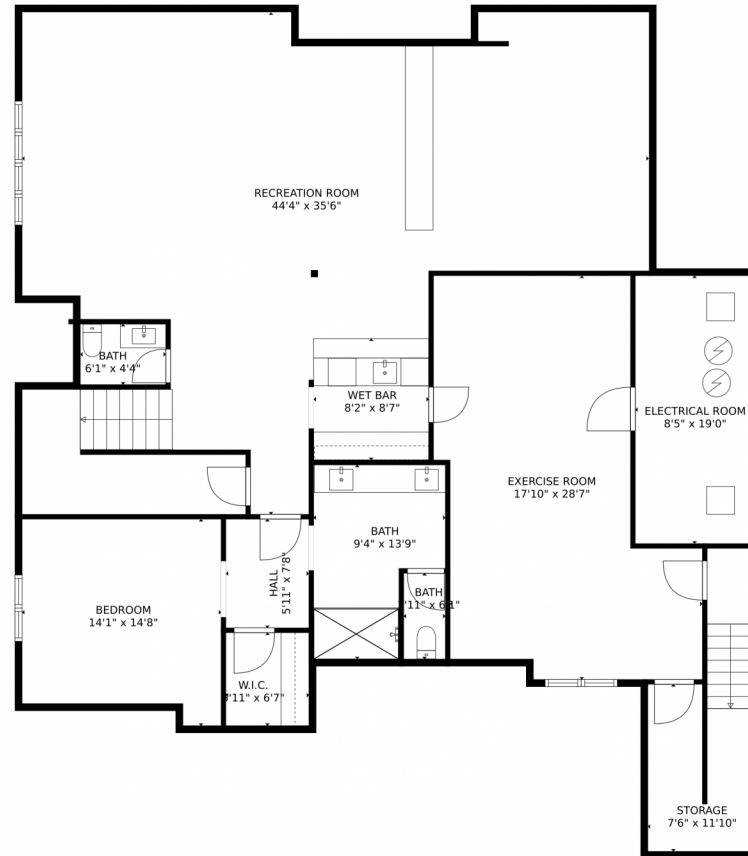
Jaden Combs
303-324-1437
jaden@kentwood.com



Scan code
for more
property
details



2321 S Garfield Street, Denver, CO 80210 — lower level



TOTAL: 6648 sq. ft

Below Ground: 2086 sq. ft, FLOOR 2: 3172 sq. ft, FLOOR 3: 1390 sq. ft
EXCLUDED AREAS: STORAGE: 122 sq. ft, ELECTRICAL ROOM: 184 sq. ft, GARAGE: 992 sq. ft,
DECK: 89 sq. ft, COVERED PATIO: 249 sq. ft, PATIO: 1124 sq. ft,
PORCH: 575 sq. ft, OPEN TO BELOW: 148 sq. ft

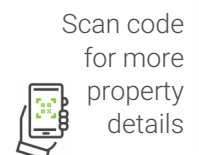
MEASUREMENTS CALCULATED BY V1Photos.com ARE DEEMED HIGHLY RELIABLE BUT NOT GUARANTEED.



Disclaimer: Sizes and Dimensions are Approximate, Actual May Vary.



Jaden Combs
303-324-1437
jaden@kentwood.com



Scan code
for more
property
details



2321 S Garfield Street, Denver, CO 80210 — all levels



TOTAL: 6648 sq. ft
Below Ground: 2086 sq. ft, FLOOR 2: 3172 sq. ft, FLOOR 3: 1390 sq. ft
EXCLUDED AREAS: STORAGE: 122 sq. ft, ELECTRICAL ROOM: 184 sq. ft, GARAGE: 992 sq. ft,
DECK: 89 sq. ft, COVERED PATIO: 249 sq. ft, PATIO: 1124 sq. ft,
PORCH: 575 sq. ft, OPEN TO BELOW: 148 sq. ft

MEASUREMENTS CALCULATED BY V1Photos.com ARE DEEMED HIGHLY RELIABLE BUT NOT GUARANTEED.



Disclaimer: Sizes and Dimensions are Approximate, Actual May Vary.



Jaden Combs
303-324-1437
jaden@kentwood.com



Scan code
for more
property
details

