



1692 Marsh Hawk Circle  
 Castle Rock, CO 80109  
 COMMUNITY: Red Hawk

MLS # 3724730  
 PRICE \$690,000



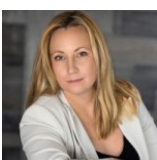
1692 Marsh Hawk Circle, Castle Rock, CO 80109 - Upper Level



Single Family  
 3774 SQFT  
 5 Beds  
 3/1 Baths  
 3 Car  
 0.21 Acre

## PROPERTY DETAILS

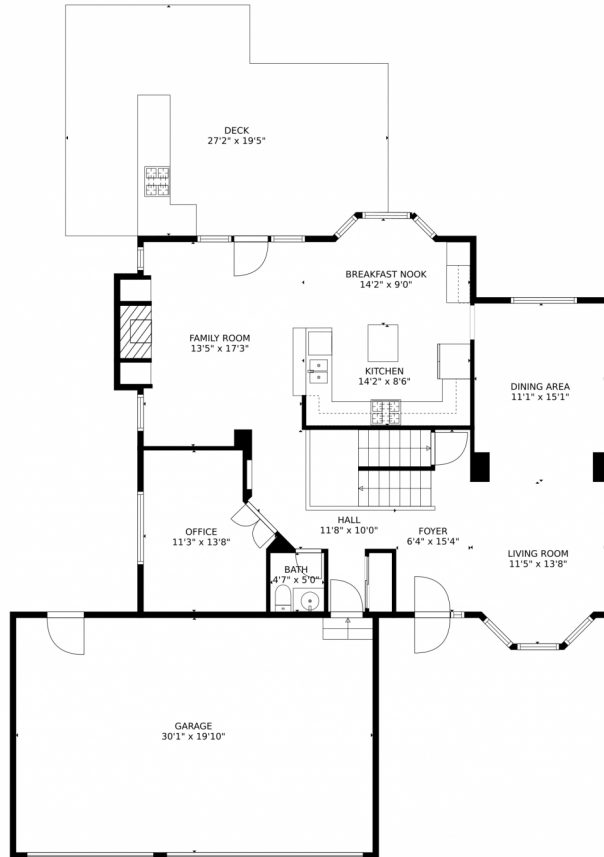
This stunning Red Hawk home is brand new! Enjoy coffee on your private back deck while watching deer, and take a short walk to one of Castle Rock's top golf courses. Located in a quiet neighborhood, this turn-key 5-bedroom home features a large yard, backyard kitchen, and a beautiful cook's kitchen inside. With vaulted ceilings, new paint, carpet, furnace, and roof, this home reflects pride of ownership. The finished basement offers guest or rental space with a separate kitchen and bath. Upstairs, four spacious bedrooms include a primary suite with a remodeled bathroom and views of Castle Rock. Conveniently located near golf, parks, shopping, restaurants, and an easy commute to Denver and Colorado Springs.



**Lauren Weiss**  
 720-485-1500  
 lauren@laurenweiss.com  
<https://www.laurenweiss.com>



# 1692 Marsh Hawk Circle, Castle Rock, CO 80109 – Main Level



**TOTAL: 3243 sq. ft**  
Below Ground: 811 sq. ft, FLOOR 2: 1208 sq. ft, FLOOR 3: 1224 sq. ft  
EXCLUDED AREAS: ELECTRICAL ROOM: 64 sq. ft, STORAGE: 178 sq. ft, GARAGE: 597 sq. ft,  
DECK: 466 sq. ft, OPEN TO BELOW: 292 sq. ft

MEASUREMENTS CALCULATED BY V1Photos.com ARE DEEMED HIGHLY RELIABLE BUT NOT GUARANTEED.



Disclaimer: Sizes and Dimensions are Approximate, Actual May Vary.



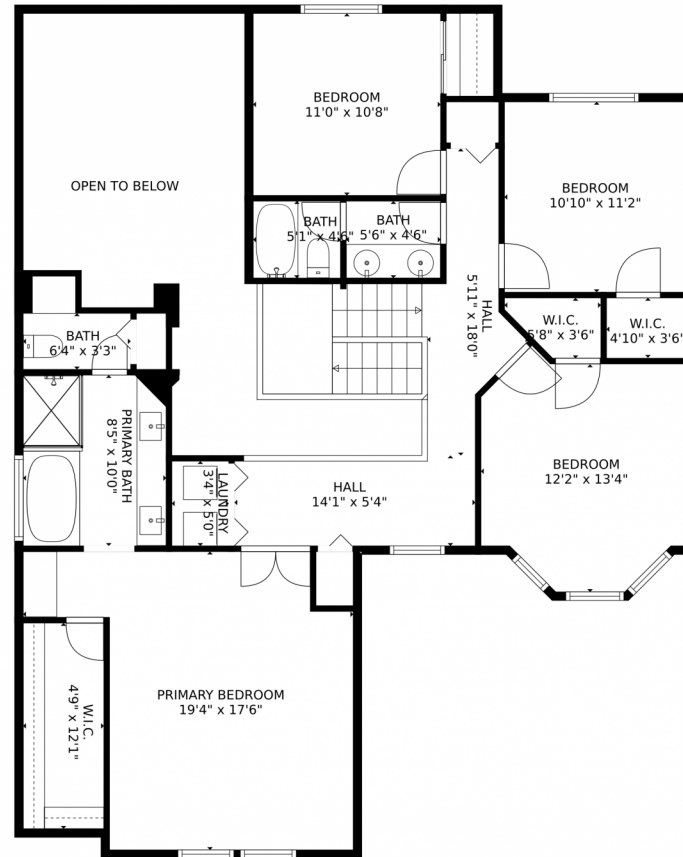
**Lauren Weiss**  
720-485-1500  
lauren@laurenweiss.com  
<https://www.laurenweiss.com>



Scan code  
for more  
property  
details



# 1692 Marsh Hawk Circle, Castle Rock, CO 80109 – Upper Level



**TOTAL: 3243 sq. ft**  
Below Ground: 811 sq. ft, FLOOR 2: 1208 sq. ft, FLOOR 3: 1224 sq. ft  
EXCLUDED AREAS: ELECTRICAL ROOM: 64 sq. ft, STORAGE: 178 sq. ft, GARAGE: 597 sq. ft,  
DECK: 466 sq. ft, OPEN TO BELOW: 292 sq. ft

MEASUREMENTS CALCULATED BY V1Photos.com ARE DEEMED HIGHLY RELIABLE BUT NOT GUARANTEED.



Disclaimer: Sizes and Dimensions are Approximate, Actual May Vary.



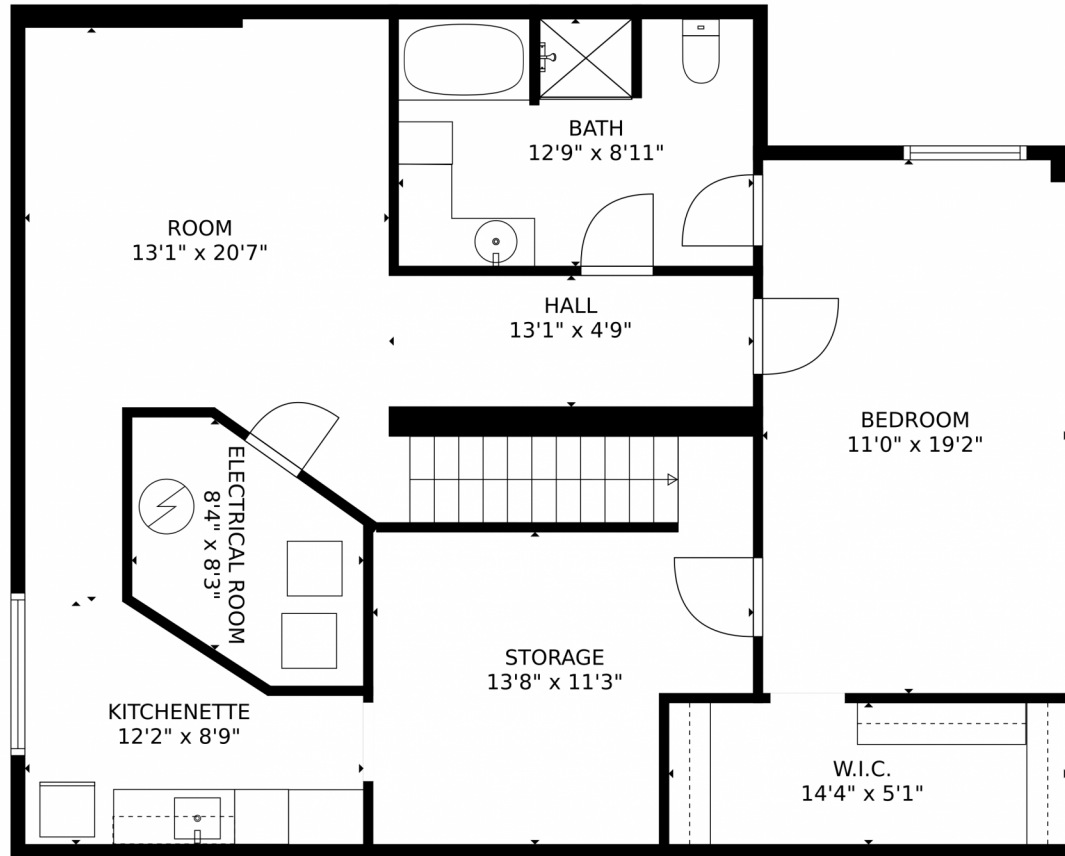
**Lauren Weiss**  
720-485-1500  
lauren@laurenweiss.com  
<https://www.laurenweiss.com>



Scan code  
for more  
property  
details

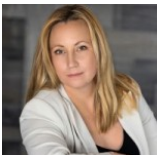


1692 Marsh Hawk Circle, Castle Rock, CO 80109 – Lower Level



**TOTAL: 3243 sq. ft**  
Below Ground: 811 sq. ft, FLOOR 2: 1208 sq. ft, FLOOR 3: 1224 sq. ft  
EXCLUDED AREAS: ELECTRICAL ROOM: 64 sq. ft, STORAGE: 178 sq. ft, GARAGE: 597 sq. ft,  
DECK: 466 sq. ft, OPEN TO BELOW: 292 sq. ft  
MEASUREMENTS CALCULATED BY V1Photos.com ARE DEEMED HIGHLY RELIABLE BUT NOT GUARANTEED.

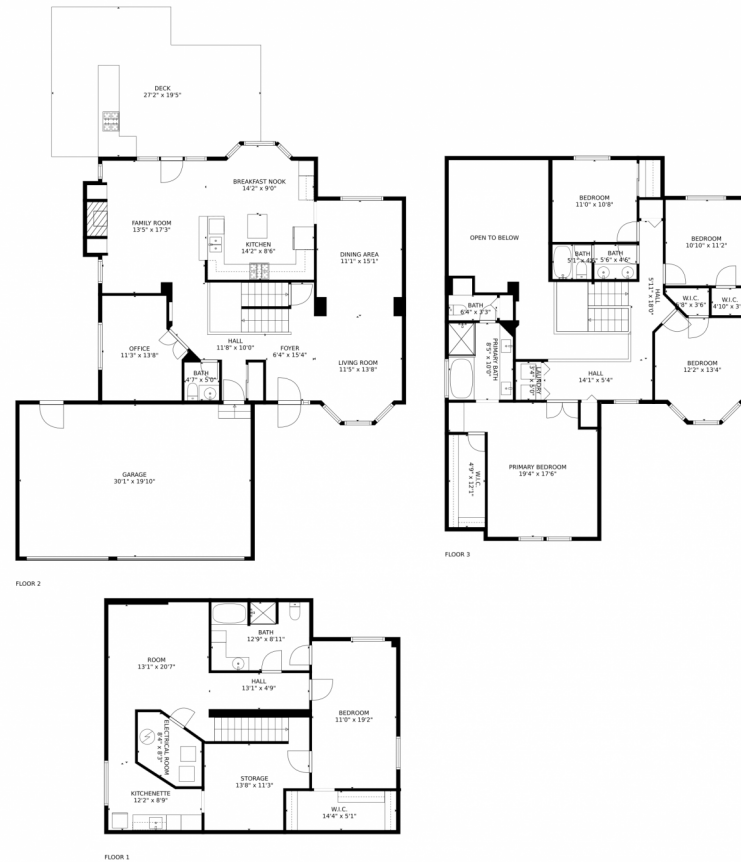
Disclaimer: Sizes and Dimensions are Approximate, Actual May Vary.



**Lauren Weiss**  
720-485-1500  
lauren@laurenweiss.com  
<https://www.laurenweiss.com>



# 1692 Marsh Hawk Circle, Castle Rock, CO 80109 – All Levels



**TOTAL: 3243 sq. ft**  
Below Ground: 811 sq. ft, FLOOR 2: 1208 sq. ft, FLOOR 3: 1224 sq. ft  
EXCLUDED AREAS: ELECTRICAL ROOM: 64 sq. ft, STORAGE: 178 sq. ft, GARAGE: 597 sq. ft,  
DECK: 466 sq. ft, OPEN TO BELOW: 292 sq. ft

MEASUREMENTS CALCULATED BY V1Photos.com ARE DEEMED HIGHLY RELIABLE BUT NOT GUARANTEED.



Disclaimer: Sizes and Dimensions are Approximate, Actual May Vary.



**Lauren Weiss**  
720-485-1500  
lauren@laurenweiss.com  
<https://www.laurenweiss.com>



Scan code  
for more  
property  
details

