

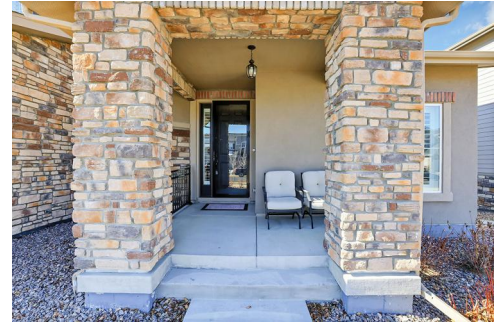


27553 East Euclid Drive  
Aurora, CO 80016  
COMMUNITY: Southshore

MLS # 9905851

PRICE

\$1,495,000



Single Family



5905 SQFT



5 Beds



5/1 Baths



3 Car



0.23 Acre

## PROPERTY DETAILS

Welcome to this stunning property in Southshore, Aurora, CO. With 5 bedrooms, 5.5 bathrooms, and a 3-car garage, this single-family home offers ample space and storage. The entrance foyer features hardwood floors and a high ceiling, creating an elegant atmosphere. The living room is perfect for relaxation and entertainment, with a fireplace and high ceiling. The kitchen is a chef's dream, with stainless steel appliances and a kitchen island. The bedrooms are comfortable and filled with natural light. The bathrooms offer a spa-like experience. Outdoor living is impressive, with a wooden deck, patio area, and swimming pool. As a resident of Southshore, you'll have access to parks, trails, and a community pool. Don't miss the chance to view this luxurious property. Contact us today!



**Barry Overton**

303-668-5433

barry.overton@exprealty.com

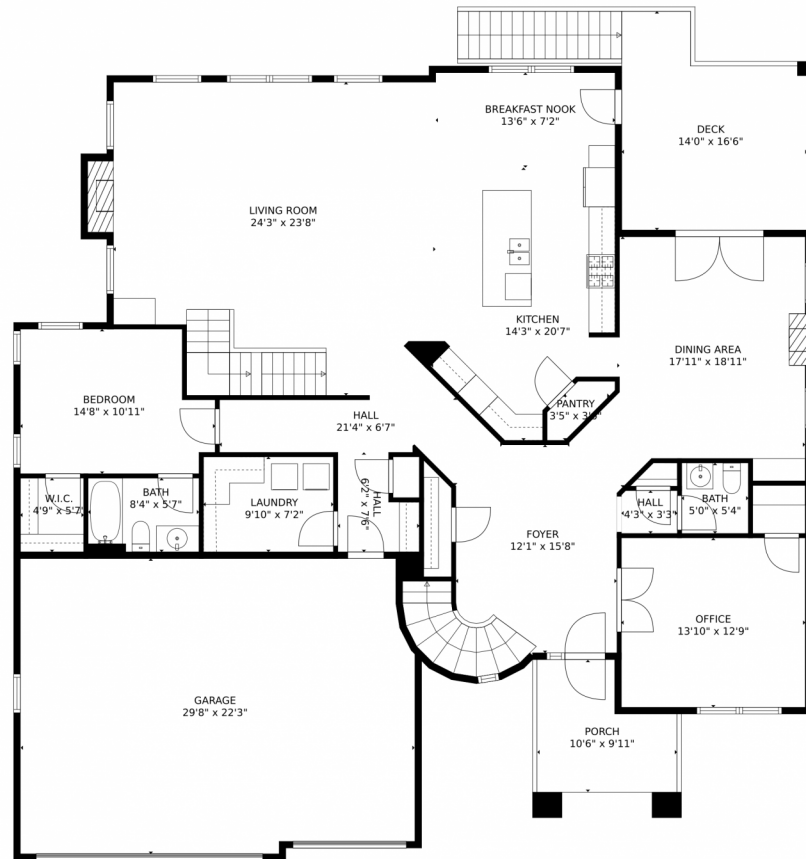
<https://www.Barryovertonrealtor.com>



Scan code  
for more  
property  
details



# 27553 East Euclid Drive, Aurora, CO 80016 – Main Level



**TOTAL: 5541 sq. ft**  
Below Ground: 1634 sq. ft, FLOOR 2: 2104 sq. ft, FLOOR 3: 1803 sq. ft  
EXCLUDED AREAS: UNFINISHED BASEMENT: 406 sq. ft, COVERED PATIO: 178 sq. ft, PATIO: 1431 sq. ft,  
DECK: 194 sq. ft, PORCH: 86 sq. ft, GARAGE: 645 sq. ft,  
FIREPLACE: 16 sq. ft, ELECTRICAL ROOM: 24 sq. ft, OPEN TO BELOW: 596 sq. ft  
MEASUREMENTS CALCULATED BY V1Photos.com ARE DEEMED HIGHLY RELIABLE BUT NOT GUARANTEED.



Disclaimer: Sizes and Dimensions are Approximate, Actual May Vary.



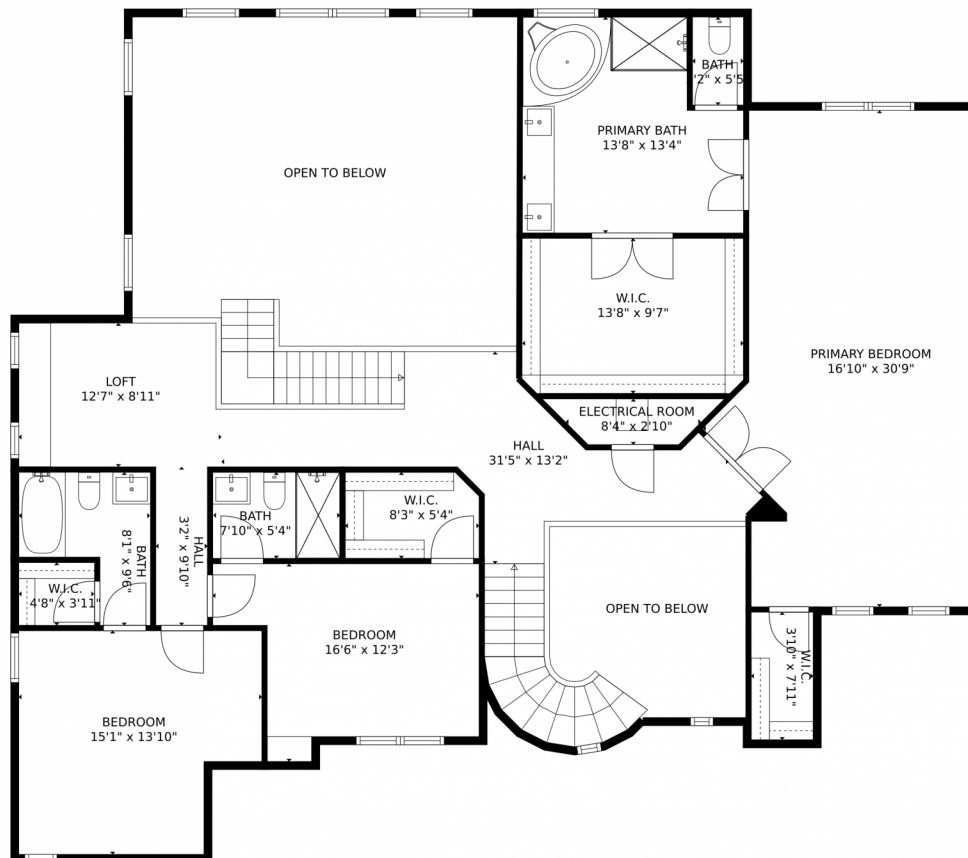
**Barry Overton**  
303-668-5433  
barry.overton@exprealty.com  
<https://www.Barryovertonrealtor.com>



Scan code  
for more  
property  
details



# 27553 East Euclid Drive, Aurora, CO 80016 – Upper Level



**TOTAL: 5541 sq. ft**  
 Below Ground: 1634 sq. ft, FLOOR 2: 2104 sq. ft, FLOOR 3: 1803 sq. ft  
 EXCLUDED AREAS: UNFINISHED BASEMENT: 406 sq. ft, COVERED PATIO: 178 sq. ft, PATIO: 1431 sq. ft,  
 DECK: 194 sq. ft, PORCH: 86 sq. ft, GARAGE: 645 sq. ft,  
 FIREPLACE: 16 sq. ft, ELECTRICAL ROOM: 24 sq. ft, OPEN TO BELOW: 596 sq. ft  
 MEASUREMENTS CALCULATED BY V1Photos.com ARE DEEMED HIGHLY RELIABLE BUT NOT GUARANTEED.



Disclaimer: Sizes and Dimensions are Approximate, Actual May Vary.

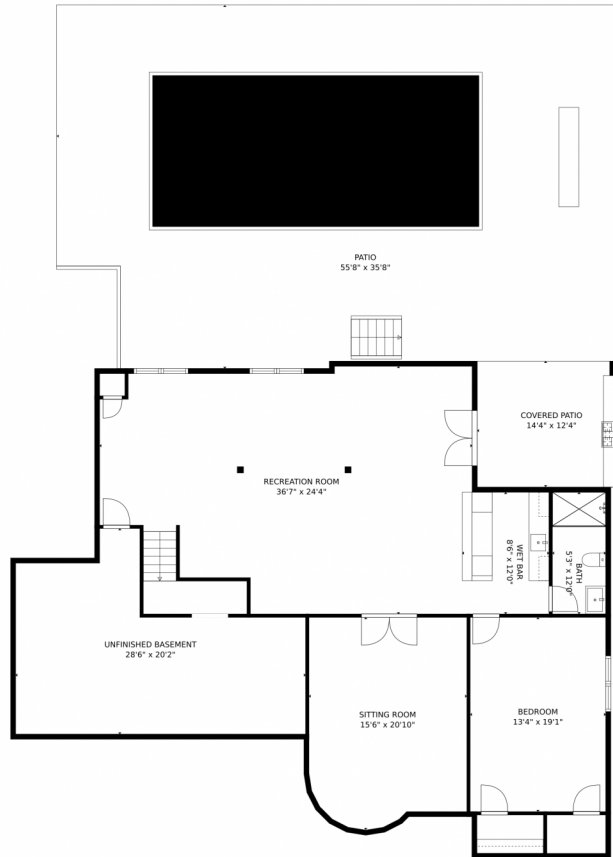


**Barry Overton**  
 303-668-5433  
 barry.overton@exprealty.com  
<https://www.Barryovertonrealtor.com>

Scan code for more property details



# 27553 East Euclid Drive, Aurora, CO 80016 – Lower Level



**TOTAL: 5541 sq. ft**  
Below Ground: 1634 sq. ft, FLOOR 2: 2104 sq. ft, FLOOR 3: 1803 sq. ft  
EXCLUDED AREAS: UNFINISHED BASEMENT: 406 sq. ft, COVERED PATIO: 178 sq. ft, PATIO: 1431 sq. ft,  
DECK: 194 sq. ft, PORCH: 86 sq. ft, GARAGE: 645 sq. ft,  
FIREPLACE: 16 sq. ft, ELECTRICAL ROOM: 24 sq. ft, OPEN TO BELOW: 596 sq. ft  
MEASUREMENTS CALCULATED BY V1Photos.com ARE DEEMED HIGHLY RELIABLE BUT NOT GUARANTEED.



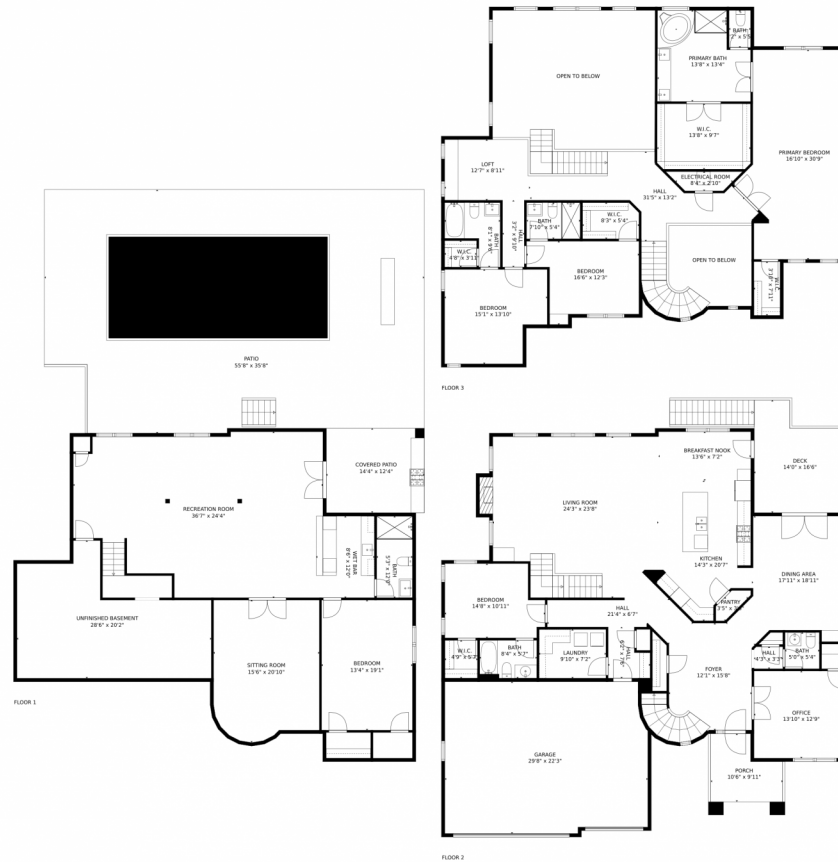
Disclaimer: Sizes and Dimensions are Approximate, Actual May Vary.



**Barry Overton**  
303-668-5433  
barry.overton@exprealty.com  
<https://www.Barryovertonrealtor.com>



# 27553 East Euclid Drive, Aurora, CO 80016 – All Levels



**TOTAL: 5541 sq. ft**  
Below Ground: 1634 sq. ft, FLOOR 2: 2104 sq. ft, FLOOR 3: 1803 sq. ft  
EXCLUDED AREAS: UNFINISHED BASEMENT: 406 sq. ft, COVERED PATIO: 178 sq. ft, PATIO: 1431 sq. ft,  
DECK: 194 sq. ft, PORCH: 86 sq. ft, GARAGE: 645 sq. ft,  
FIREPLACE: 16 sq. ft, ELECTRICAL ROOM: 24 sq. ft, OPEN TO BELOW: 596 sq. ft

MEASUREMENTS CALCULATED BY V1Photos.COM ARE DEEMED HIGHLY RELIABLE BUT NOT GUARANTEED.



Disclaimer: Sizes and Dimensions are Approximate, Actual May Vary.



**Barry Overton**  
303-668-5433  
barry.overton@exprealty.com  
<https://www.Barryovertonrealtor.com>



Scan code  
for more  
property  
details

