



Single Family



2321 SQFT



4 Beds



3/1 Baths



3 Car



0.15 Acre

PROPERTY DETAILS

Say NO to Metro taxes and yes to this charming home in Timber Ridge! This sweetheart home has been lovingly cared for and reflects pride of ownership throughout. Inside, the home has a large living room brightened by a front facing window, a dining room, and kitchen with plenty of cabinetry. Beautiful and easy to maintain hardwood flooring, four bedrooms, 3.5 baths, and a spacious 3 car garage make this a very functional home. The back yard is peaceful and private, backing to open space and walking trails. Raised beds are ready for your gardening projects. This one is a wonderful opportunity for happy new owners to move right in!



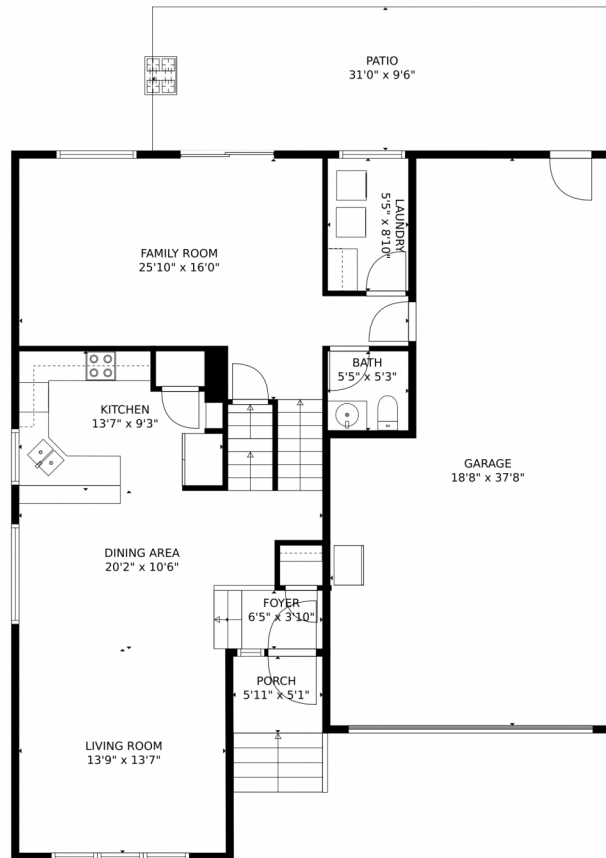
Reba Tipton
970-215-6768
rebatipton@windermere.com



Scan code
for more
property
details



209 Windflower Way, Severance, CO 80550 — Main Level



GROSS INTERNAL AREA
Below Ground: 397 sq. ft, FLOOR 2: 948 sq. ft, FLOOR 3: 694 sq. ft
EXCLUDED AREAS: UNDEFINED: 57 sq. ft, ELECTRICAL ROOM: 40 sq. ft, GARAGE: 598 sq. ft,
PORCH: 30 sq. ft, PATIO: 296 sq. ft
TOTAL: 2039 sq. ft
MEASUREMENTS CALCULATED BY V1Photos.com ARE DEEMED HIGHLY RELIABLE BUT NOT GUARANTEED.

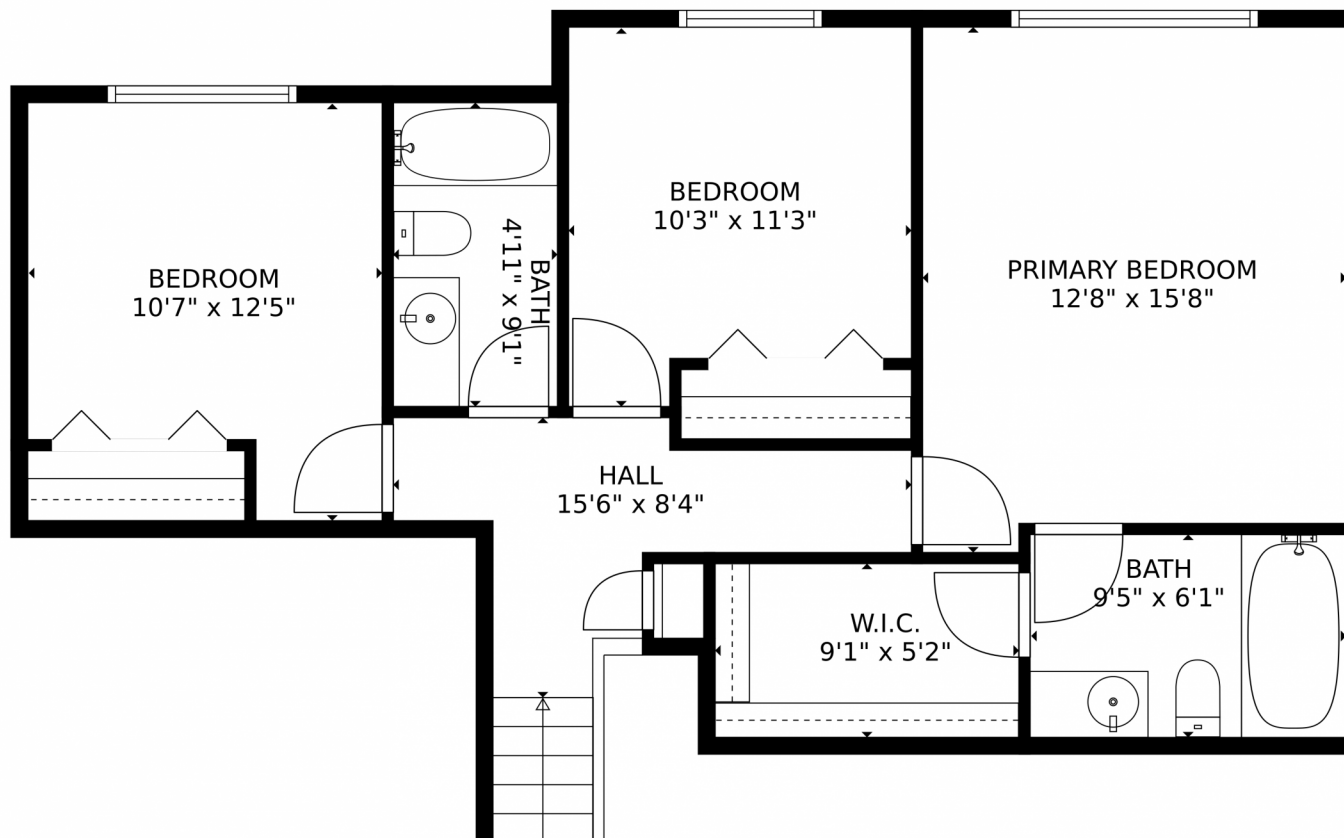
Disclaimer: Sizes and Dimensions are Approximate, Actual May Vary.



Reba Tipton
970-215-6768
rebatipton@windermere.com



209 Windflower Way, Severance, CO 80550 – Upper Level

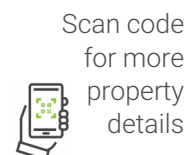


GROSS INTERNAL AREA
Below Ground: 397 sq. ft, FLOOR 2: 948 sq. ft, FLOOR 3: 694 sq. ft
EXCLUDED AREAS: UNDEFINED: 57 sq. ft, ELECTRICAL ROOM: 40 sq. ft, GARAGE: 598 sq. ft,
PORCH: 30 sq. ft, PATIO: 296 sq. ft
TOTAL: 2039 sq. ft
MEASUREMENTS CALCULATED BY V1Photos.com ARE DEEMED HIGHLY RELIABLE BUT NOT GUARANTEED.

Disclaimer: Sizes and Dimensions are Approximate, Actual May Vary.



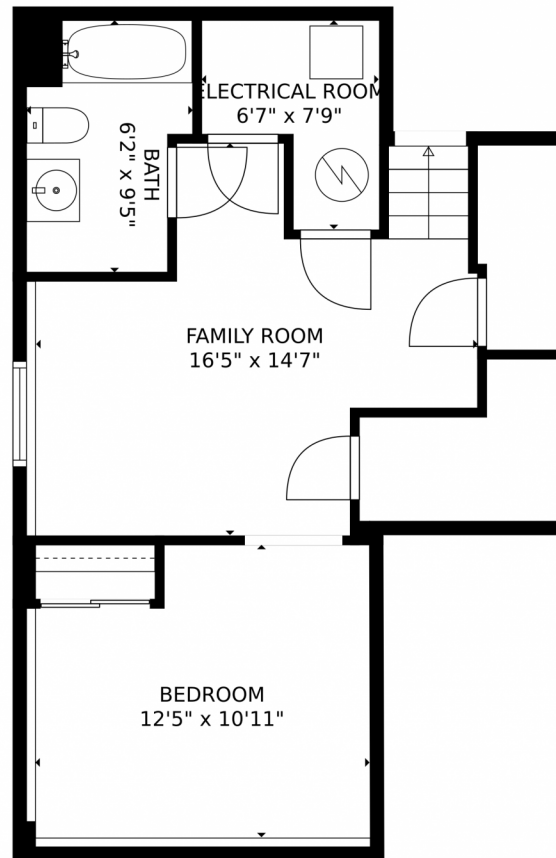
Reba Tipton
970-215-6768
rebatipton@windermere.com



Scan code
for more
property
details



209 Windflower Way, Severance, CO 80550 – Lower Level



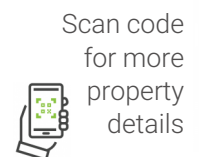
GROSS INTERNAL AREA
Below Ground: 397 sq. ft, FLOOR 2: 948 sq. ft, FLOOR 3: 694 sq. ft
EXCLUDED AREAS: UNDEFINED: 57 sq. ft, ELECTRICAL ROOM: 40 sq. ft, GARAGE: 598 sq. ft,
PORCH: 30 sq. ft, PATIO: 296 sq. ft
TOTAL: 2039 sq. ft
MEASUREMENTS CALCULATED BY V1Photos.com ARE DEEMED HIGHLY RELIABLE BUT NOT GUARANTEED.



Disclaimer: Sizes and Dimensions are Approximate, Actual May Vary.



Reba Tipton
970-215-6768
rebatipton@windermere.com



Scan code
for more
property
details



209 Windflower Way, Severance, CO 80550 – All Levels



GROSS INTERNAL AREA
 Below Ground: 397 sq. ft, FLOOR 2: 948 sq. ft, FLOOR 3: 694 sq. ft
 EXCLUDED AREAS: 57 sq. ft, ELECTRICAL ROOM: 40 sq. ft, GARAGE: 598 sq. ft,
 PORCH: 30 sq. ft, PATIO: 296 sq. ft
 TOTAL: 2039 sq. ft
 MEASUREMENTS CALCULATED BY V1Photos.com ARE DEEMED HIGHLY RELIABLE BUT NOT GUARANTEED.



Disclaimer: Sizes and Dimensions are Approximate, Actual May Vary.



Reba Tipton
 970-215-6768
 rebatipton@windermere.com

