



2476 Payne Circle East  
Colorado Springs, CO 80916



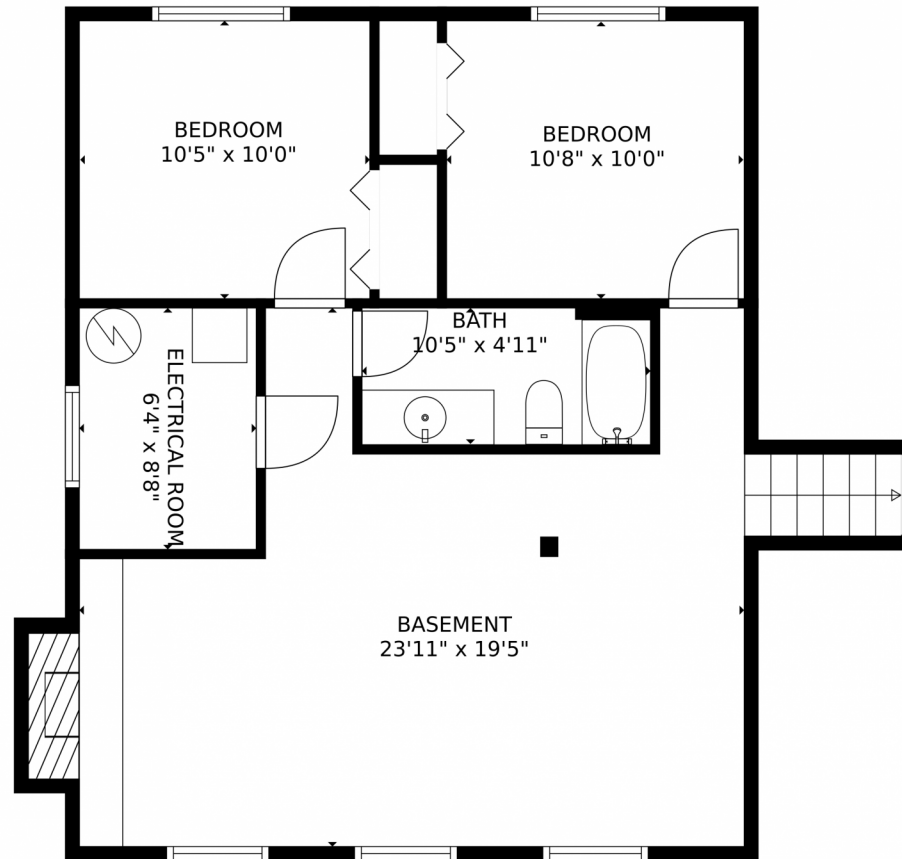
 Single Family  1916 SQFT  4 Beds  2 Baths  2 Car



**Jordan Kermes**  
952-956-2958  
jordan@kermesllc.com



## 2476 Payne Circle East, Colorado Springs, CO 80916 — Lower Level



GROSS INTERNAL AREA  
Below Ground: 675 sq. ft, FLOOR 2: 480 sq. ft, FLOOR 3: 818 sq. ft  
EXCLUDED AREAS: ELECTRICAL ROOM: 55 sq. ft, FIREPLACE: 7 sq. ft, GARAGE: 404 sq. ft,  
PORCH: 38 sq. ft, PATIO: 184 sq. ft  
TOTAL: 1973 sq. ft  
MEASUREMENTS CALCULATED BY V1Photos.com ARE DEEMED HIGHLY RELIABLE BUT NOT GUARANTEED.



Disclaimer: Sizes and Dimensions are Approximate, Actual May Vary.



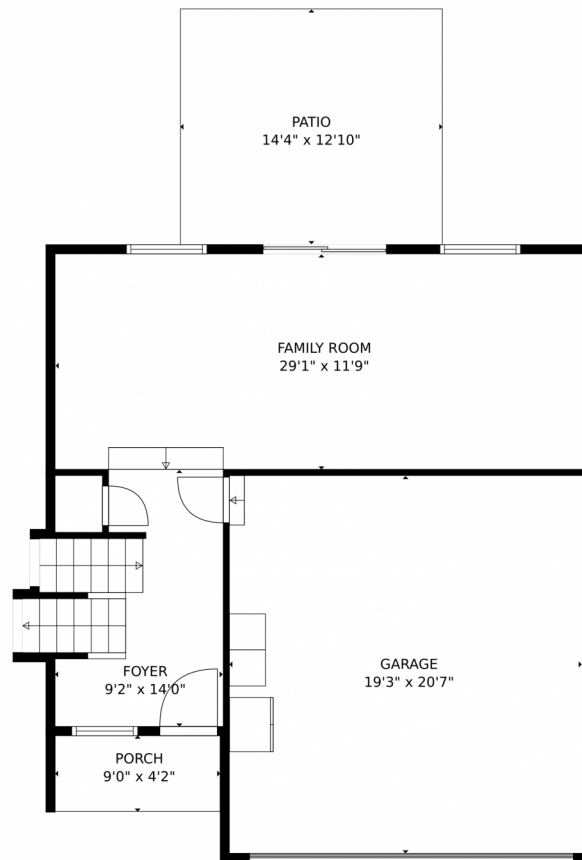
**Jordan Kermes**  
952-956-2958  
jordan@kermesllc.com



Scan code  
for more  
property  
details



## 2476 Payne Circle East, Colorado Springs, CO 80916 — Main Level



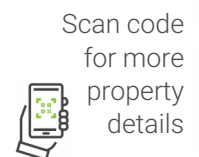
GROSS INTERNAL AREA  
Below Ground: 675 sq. ft, FLOOR 2: 480 sq. ft, FLOOR 3: 818 sq. ft  
EXCLUDED AREAS: ELECTRICAL ROOM: 55 sq. ft, FIREPLACE: 7 sq. ft, GARAGE: 404 sq. ft,  
PORCH: 38 sq. ft, PATIO: 184 sq. ft  
TOTAL: 1973 sq. ft  
MEASUREMENTS CALCULATED BY V1Photos.com ARE DEEMED HIGHLY RELIABLE BUT NOT GUARANTEED.



Disclaimer: Sizes and Dimensions are Approximate, Actual May Vary.



**Jordan Kermes**  
952-956-2958  
jordan@kermesllc.com

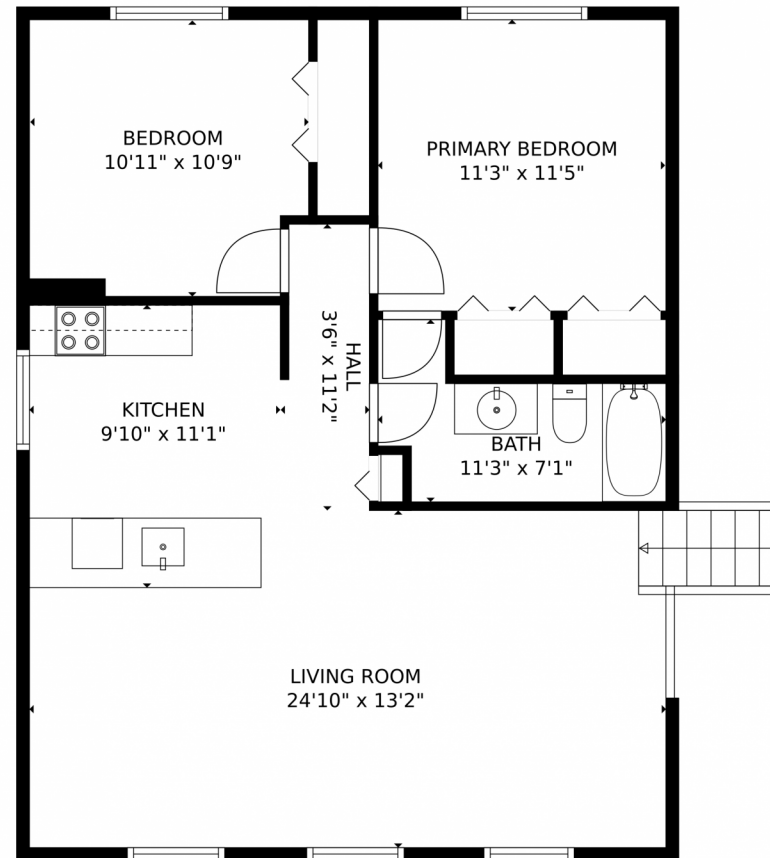


Scan code  
for more  
property  
details





## 2476 Payne Circle East, Colorado Springs, CO 80916 — Upper Level



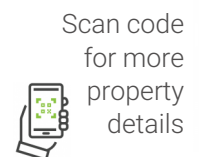
GROSS INTERNAL AREA  
Below Ground: 675 sq. ft, FLOOR 2: 480 sq. ft, FLOOR 3: 818 sq. ft  
EXCLUDED AREAS: ELECTRICAL ROOM: 55 sq. ft, FIREPLACE: 7 sq. ft, GARAGE: 404 sq. ft,  
PORCH: 38 sq. ft, PATIO: 184 sq. ft  
TOTAL: 1973 sq. ft  
MEASUREMENTS CALCULATED BY V1Photos.com ARE DEEMED HIGHLY RELIABLE BUT NOT GUARANTEED.



Disclaimer: Sizes and Dimensions are Approximate, Actual May Vary.



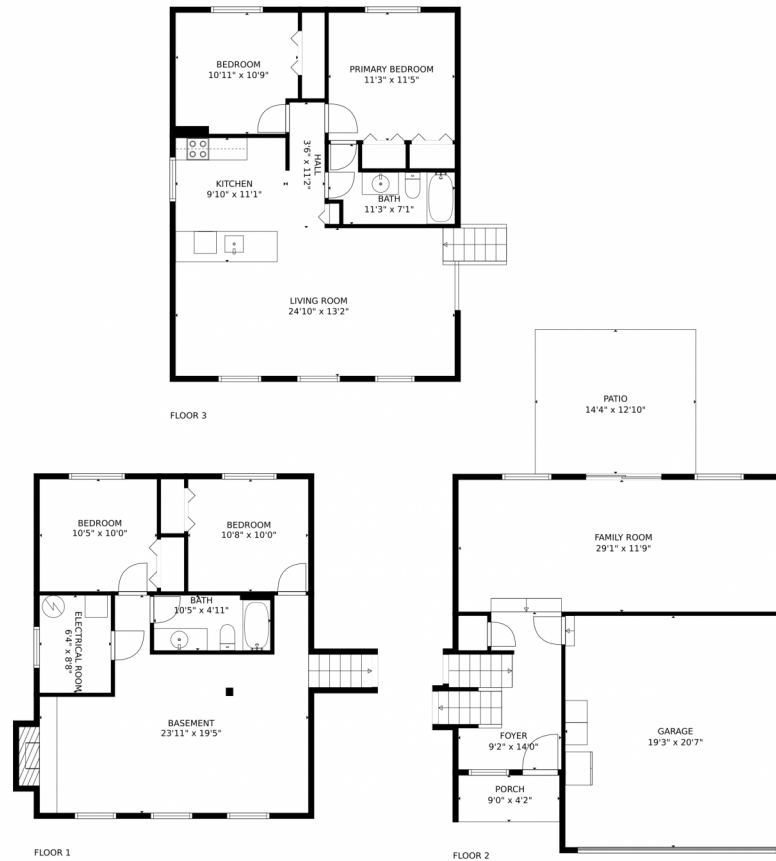
**Jordan Kermes**  
952-956-2958  
jordan@kermesllc.com



Scan code  
for more  
property  
details



# 2476 Payne Circle East, Colorado Springs, CO 80916 — All Levels



GROSS INTERNAL AREA  
Below Ground: 675 sq. ft, FLOOR 2: 480 sq. ft, FLOOR 3: 818 sq. ft  
EXCLUDED AREAS: ELECTRICAL ROOM: 55 sq. ft, FIREPLACE: 7 sq. ft, GARAGE: 404 sq. ft,  
PORCH: 38 sq. ft, PATIO: 184 sq. ft  
TOTAL: 1973 sq. ft  
MEASUREMENTS CALCULATED BY V1Photos.COM ARE DEEMED HIGHLY RELIABLE BUT NOT GUARANTEED.



Disclaimer: Sizes and Dimensions are Approximate, Actual May Vary.



**Jordan Kermes**  
952-956-2958  
jordan@kermesllc.com

