



114 Jade Way
Lyons, CO 80540
COMMUNITY: Lyons

PRICE \$995,000



Single Family



1860 SQFT



2 Beds



1/1 Baths



2.75 Acre

PROPERTY DETAILS

This stunning 1680 sq. ft. log home sits on 2.75 acres in Lyons Park Estates, just 2.5 miles from Lyons. It offers a peaceful setting with breathtaking Rocky Mountain foothill views and abundant wildlife. The home features cathedral ceilings, a contemporary kitchen with cherry cabinets and granite countertops, two spacious bedrooms, and a great room with a fireplace. The primary bedroom includes a king bed and full bath, while the second has a queen bed and half bath. Enjoy refinished red oak floors, a wrap-around deck, and a fenced garden. Heating includes a 2023 boiler and wood stove. A partially finished basement is ideal for a workshop. Excellent internet access and proximity to top hiking and biking trails make this an ideal family home. Nearby schools and attractions include Lyons (5 min), Longmont (20 min), and Rocky Mountain National Park (40 min).

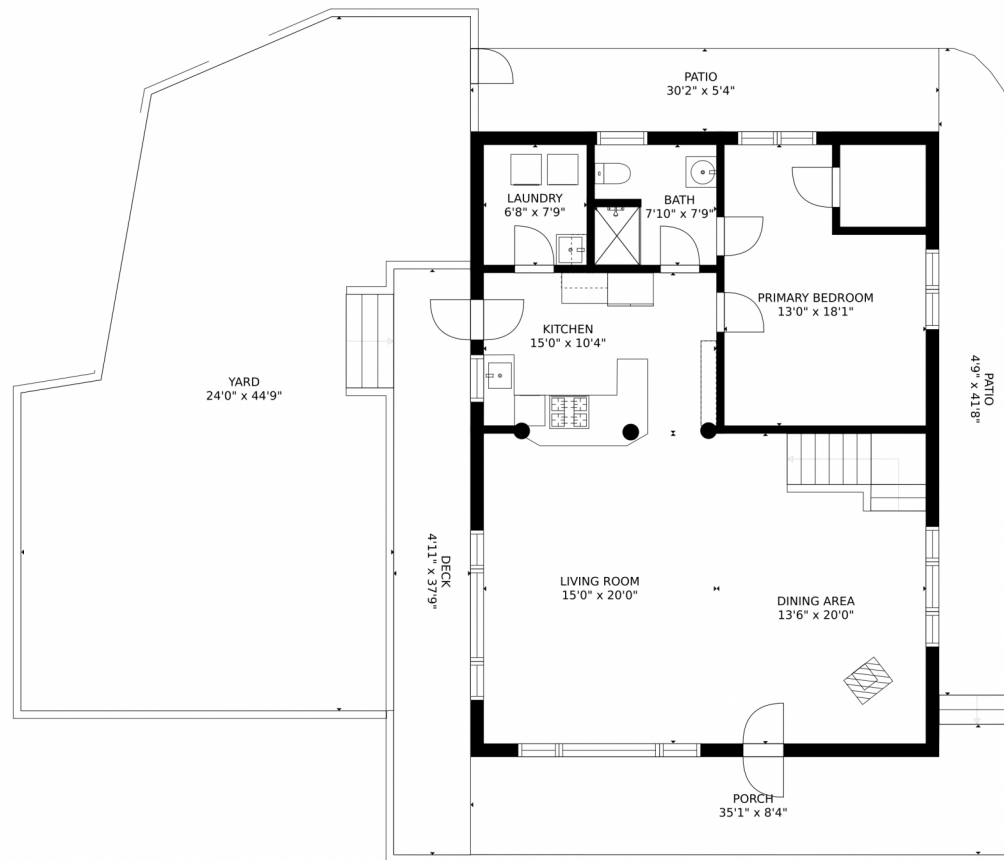
Rudy Pucel
303-898-4663
rudy.pucel@gmail.com



Scan code
for more
property
details



114 Jade Way, Lyons, CO 80540 — Main



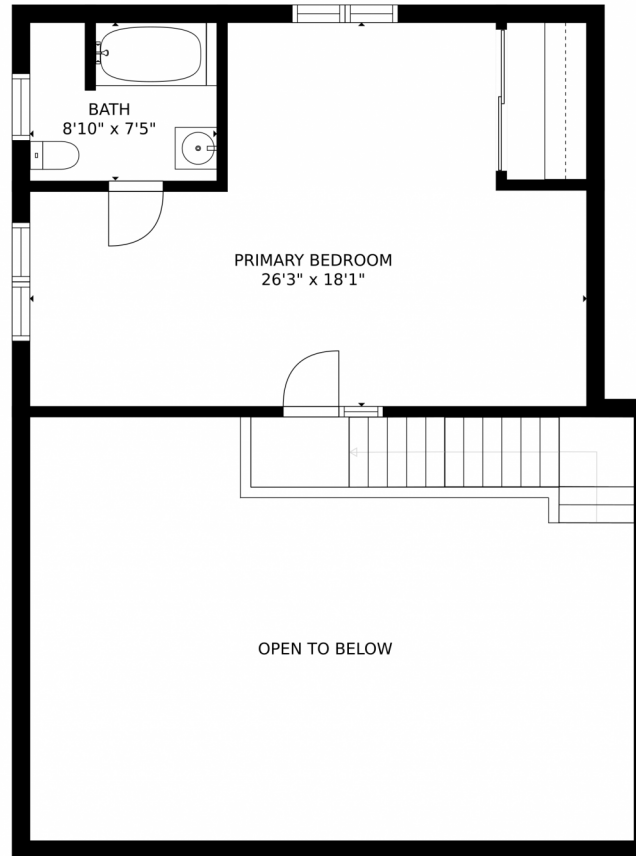
GROSS INTERNAL AREA
FLOOR 1: 1134 sq. ft. FLOOR 2: 1102 sq. ft.
FLOOR 3: 489 sq. ft. EXCLUDED AREAS:
DECK: 187 sq. ft. PATIO: 356 sq. ft.
PORCH: 232 sq. ft.
TOTAL: 2724 sq. ft.
SIZES AND DIMENSIONS ARE APPROXIMATE, ACTUAL MAY VARY.

Disclaimer: Sizes and Dimensions are Approximate, Actual May Vary.

Rudy Pucel
303-898-4663
rudy.pucel@gmail.com



114 Jade Way, Lyons, CO 80540 — 2nd Level



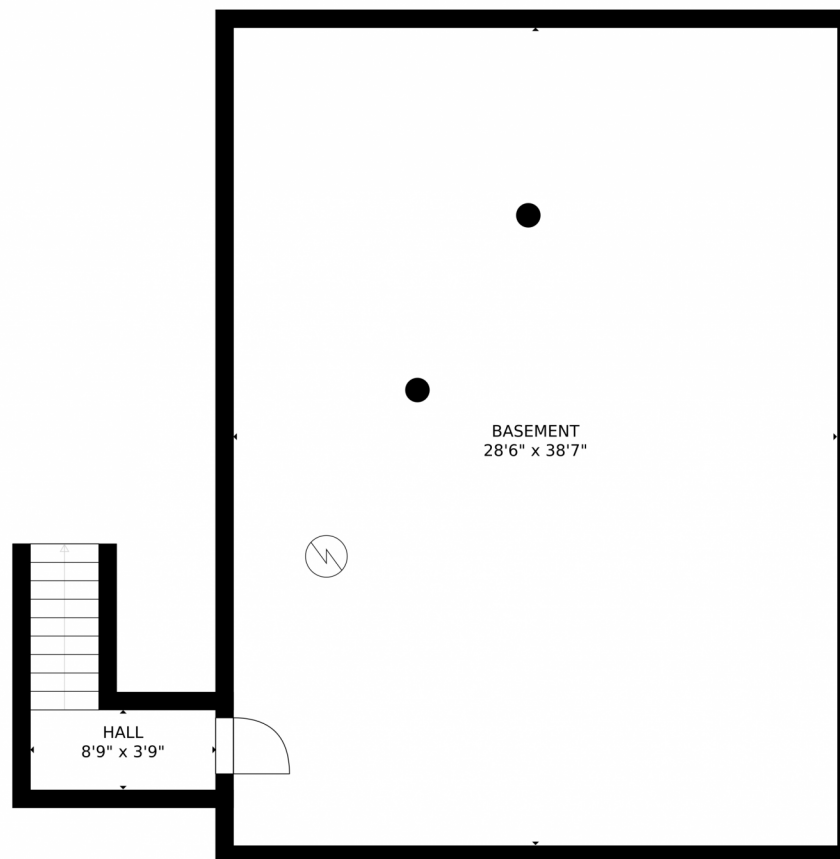
GROSS INTERNAL AREA
FLOOR 1: 1134 sq. ft, FLOOR 2: 1102 sq. ft
FLOOR 3: 489 sq. ft, EXCLUDED AREAS:
DECK: 187 sq. ft, PATIO: 356 sq. ft
PORCH: 232 sq. ft
TOTAL: 2724 sq. ft
SIZES AND DIMENSIONS ARE APPROXIMATE, ACTUAL MAY VARY.



Disclaimer: Sizes and Dimensions are Approximate, Actual May Vary.

Rudy Pucel
303-898-4663
rudy.pucel@gmail.com





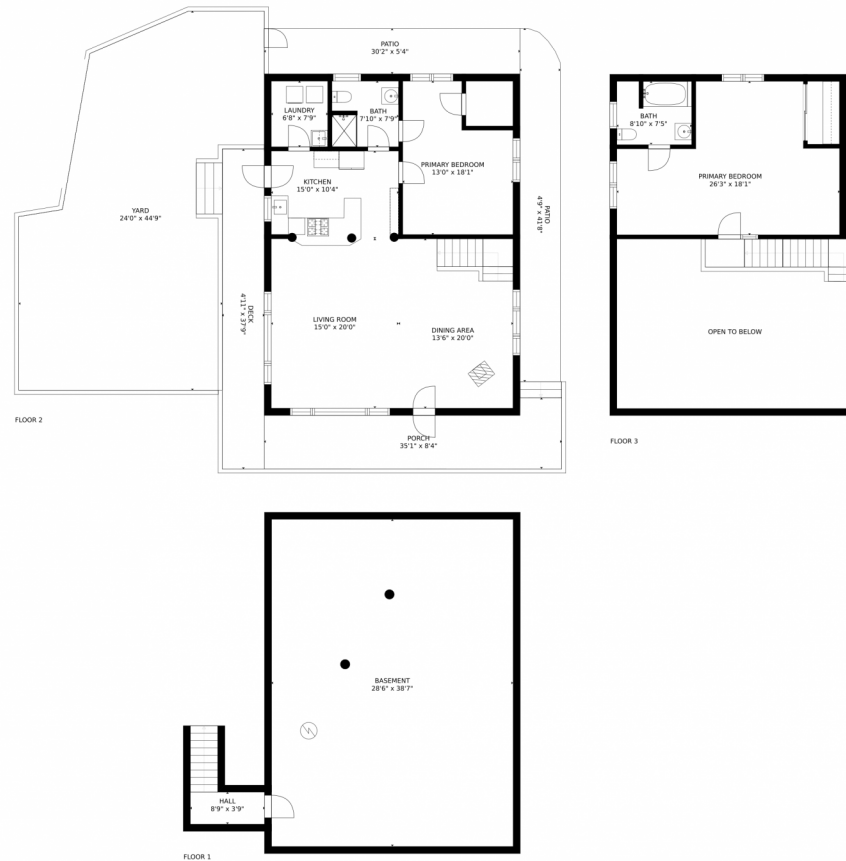
GROSS INTERNAL AREA
FLOOR 1: 1134 sq. ft, FLOOR 2: 1102 sq. ft
FLOOR 3: 489 sq. ft, EXCLUDED AREAS:
DECK: 187 sq. ft, PATIO: 356 sq. ft
PORCH: 232 sq. ft
TOTAL: 2724 sq. ft
SIZES AND DIMENSIONS ARE APPROXIMATE, ACTUAL MAY VARY.



Disclaimer: Sizes and Dimensions are Approximate, Actual May Vary.



114 Jade Way, Lyons, CO 80540 — All Levels



GROSS INTERNAL AREA
FLOOR 1: 1134 sq. ft, FLOOR 2: 1102 sq. ft
FLOOR 3: 489 sq. ft, EXCLUDED AREAS:
DECK: 187 sq. ft, PATIO: 356 sq. ft
PORCH: 232 sq. ft
TOTAL: 2724 sq. ft
SIZES AND DIMENSIONS ARE APPROXIMATE, ACTUAL MAY VARY.



Disclaimer: Sizes and Dimensions are Approximate, Actual May Vary.

Rudy Pucel
303-898-4663
rudy.pucel@gmail.com



Scan code
for more
property
details

